

SEALED SWITCH MODULE

TC
SWITCH
MODULE

SELF-CONTAINED, LONG-LIFE, SEALED SWITCH MODULE WITH UP TO 5 POSITIONS

The TC is a self contained, sealed switch module with up to 5 positions. It can be utilized in numerous applications that require a compact switch module and long life.

At slightly over an inch in diameter, it can be used in a grip, front panel, or hand held device, just to name a few applications. It is available in either a top mount or rear mount.

The advantage of the TC switch module is that it incorporates keypad functionality within a very small footprint. Standard or custom legends are available and can be LED backlit.

Standard termination options include flying leads, ribbon cable (with or without AMP connector) and FFC (flexible flat cable). Tested to three million cycles, the TC switch module has an operating temperature range of -40°C to 85°C and it is sealed to IP68S.

The TC can be used in panel or grip applications and is especially useful in cursor control or data entry applications. Applications include construction, agriculture, industrial, material handling and medical.

Features:

- **Watertight to IP68S**
- **Great for grips and panels**
- **LED backlight option**
- **3 million cycle electrical life**



TC Standard Characteristics/Ratings:

ELECTRICAL RATINGS: 1-28VDC @ Sea Level

Load: 10-100mA Resistive

Electrical Life: 3,000,000 cycles

Mechanical Life: 3,000,000 cycles

Seal: IP68S

Operating Temp Range: -40°C to +85°C

Operating Force: 1.0 +/- .5 lbs.

Pushout Force: 5 lbs. min.

MATERIALS:

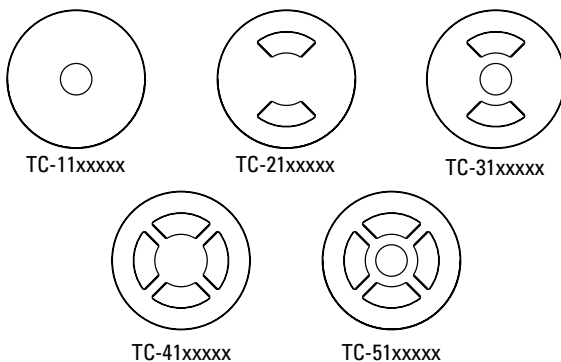
Housing: PBT

Keypad: Silicone Rubber

Terminal Hardware: None provided

Mounting Hardware: VHB tape

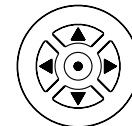
TC Switch Module Keypad Configurations



TC-5 with standard legend used in a Contour Grip

TC PART NUMBER CODE

TC	X	X	X	X	X
Position	Mounting	Termination	Backlight	Color	Legend
1. 1 Position	1. Top Mount	2. Flying Leads, UL 1569, 24 AWG	N. None	2. Black	None
2. 2 Position	2. Rear Mount (Behind Panel)	3. FFC, UL 20624	9. White		A. Arrows*
3. 3 Position		4. Ribbon Cable, UL 2651, & AMP 215083 Connector			
4. 4 Position		5. Ribbon Cable, UL 2651, Blunt Cut			
5. 5 Position					



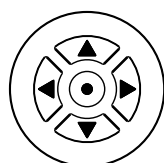
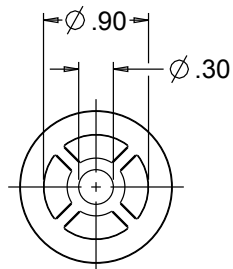
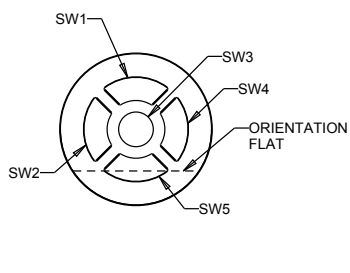
* For 5-position switch, Color = White

www.ottoexcellence.com 95

Specifications Subject To Change Without Notice

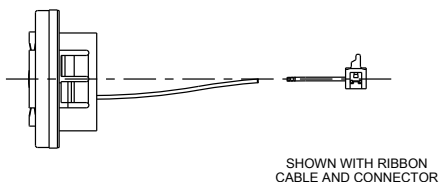
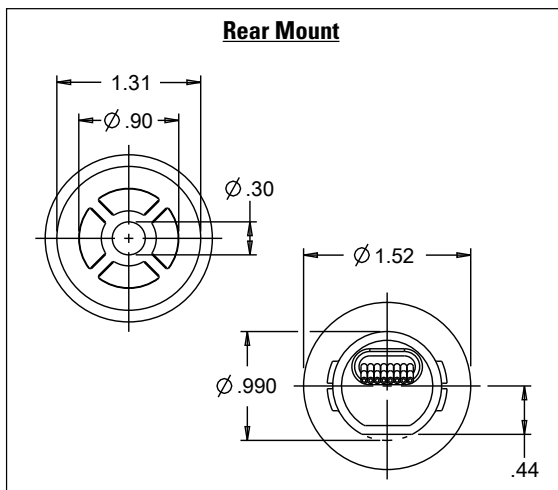
SELF-CONTAINED, LONG-LIFE, SEALED SWITCH MODULE WITH UP TO 5 POSITIONS

TC-51xxxxx Top Mount, 5 Position Module

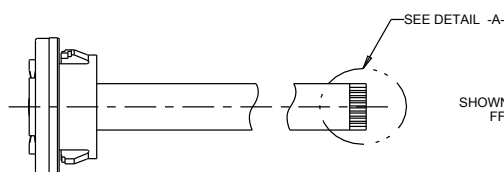
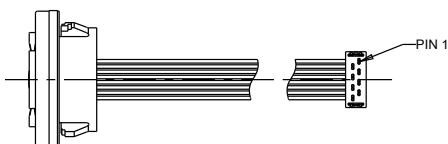


Standard legend
configuration

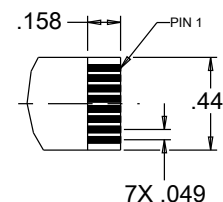
Rear Mount



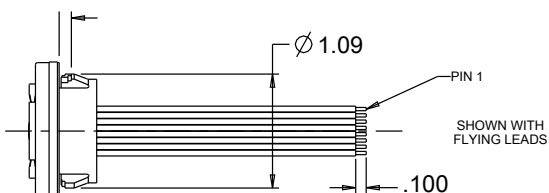
SHOWN WITH RIBBON
CABLE AND CONNECTOR



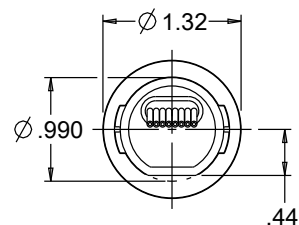
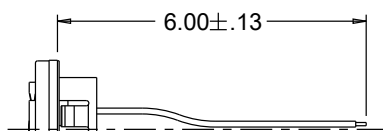
SHOWN WITH
FFC



DETAIL -A-

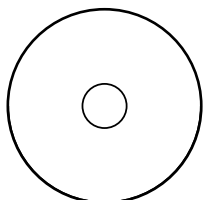


SHOWN WITH
FLYING LEADS

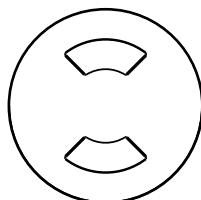


.300 MAX
.380 MAX

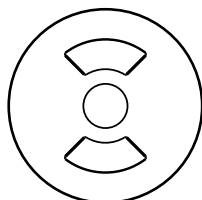
TC Switch Module Keypad Configurations



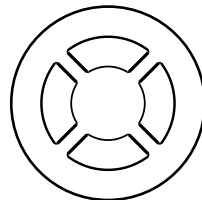
TC-11xxxxx



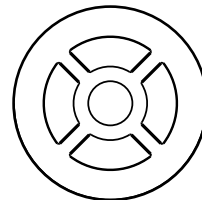
TC-21xxxxx



TC-31xxxxx



TC-41xxxxx



TC-51xxxxx