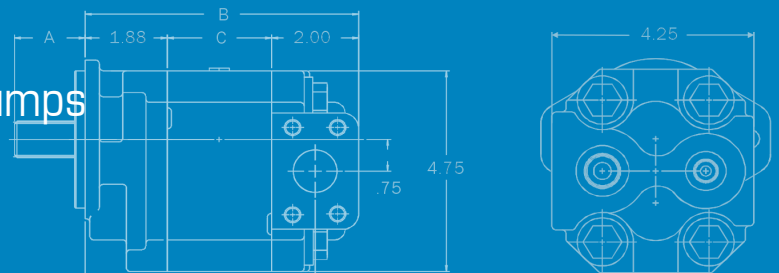


# Large Displacement Sleeve Bushing Pumps 360 SERIES

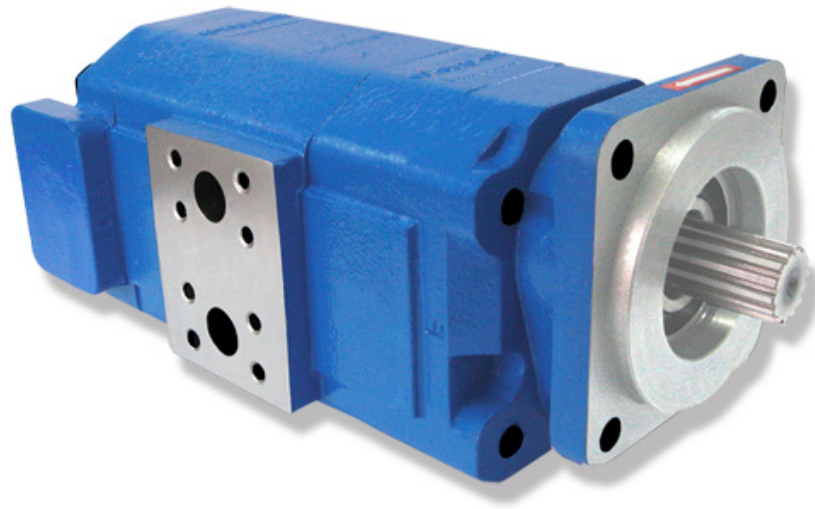


Precision-Engineered Fluid Power Products

The Sensible Choice for Pumps & Motors

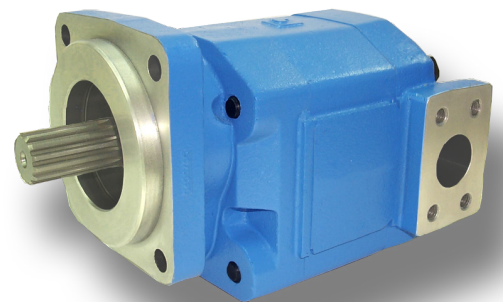


Big Winches  
Cranes  
Mobile Crushers &  
Screens  
Refuse Collection  
Roll Off Trucks  
Hoist Trucks



## Features

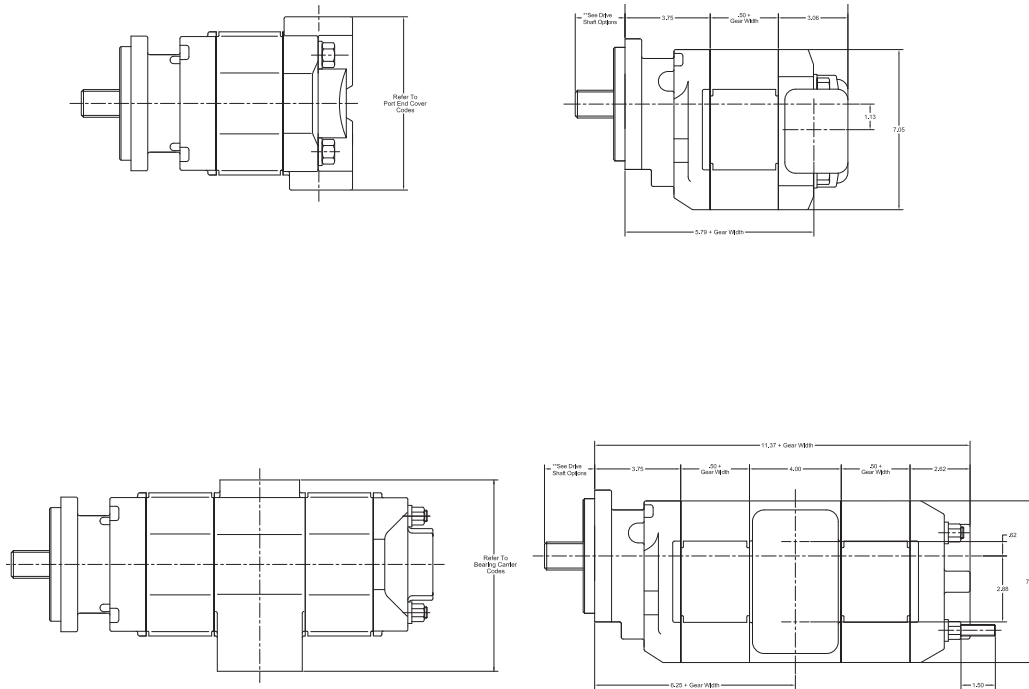
- Heavy duty sleeve bushing design in a large frame size
- Working pressure up to 3500 PSI
- Cubic inch displacements from 1.80 through 9.00
- Speeds up to 2400 RPM
- Flows up to 93 GPM
- Doweled and high strength cast iron construction
- High strength alloy steel gear and shaft sets
- Split flange & SAE ORB ports are available
- Pressure balanced wear plates maintain high pump efficiency throughout all operating ranges
- Both single inlet/single outlets and single inlet/dual outlet bearing carriers
- 100% factory tested





# Pumps & Motors

## Dimensional Data



Perenco is a leading manufacturer of high-pressure hydraulic gear/vane pumps and motors, flow dividers, intensifiers, and accessories. Available in a wide variety of sizes and configurations to suit your application needs.

## Product Information

### Pump / Motor

Gear Size	Displ Cu.In	Theo. GPM 1000 RPM	Max RPM	Max PSI
0.50	1.80	7.8	2400	3500
0.75	2.70	11.7	2400	3500
1.00	3.60	15.6	2400	3500
1.25	4.50	19.5	2400	3500
1.50	5.40	23.4	2400	3500
1.75	6.30	27.3	2400	3500
2.00	7.20	31.2	2400	3500
2.25	8.10	35.1	2400	3250
2.50	9.00	39.0	2400	3000

Our Online Support is available 24/7/365 for your needs!

Email: [support@permco.com](mailto:support@permco.com)

Call: (800) 626.2801



Perenco USA | 1500 Frost Road | P. O. Box 2068 | Streetsboro, Ohio 44241



NFPA  
Solutions through  
friction technology

