

PERMCO

P257

257 SERIES PUMPS AND MOTORS

MEDIUM DISPLACEMENT SLEEVE BUSHING PUMPS AND MOTORS



**P257 SERIES TANDEM
SINGLE INLET/DUAL OUTLET**

257 SERIES FEATURES

- Heavy duty sleeve bushing design in a medium frame size
- Cubic inch displacements from 1.29 through 6.43
- Working pressure up to 4500 PSI
- Speeds up to 2400 RPM
- Flows up to 65 GPM
- Doweled and high strength cast iron construction
- 100% factory tested
- High strength alloy steel gear and shaft sets
- A wide range of porting, mounting, and shaft options available
- Pressure balanced wear plates maintain high pump efficiency throughout all operating ranges
- Both single inlet/single outlet and single inlet/dual outlet bearing carriers available



P257 SERIES SINGLE



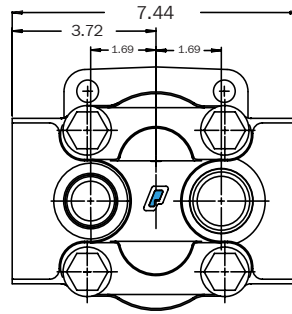
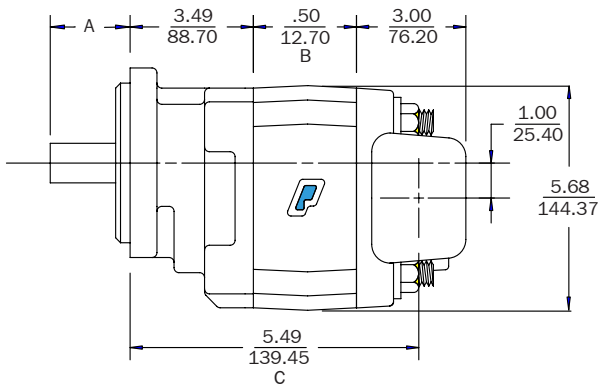
GS GLOBAL RESOURCES
Foremost in Machine Performance for Life

The Sensible Choice

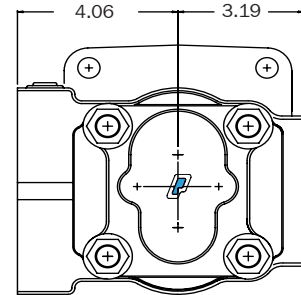
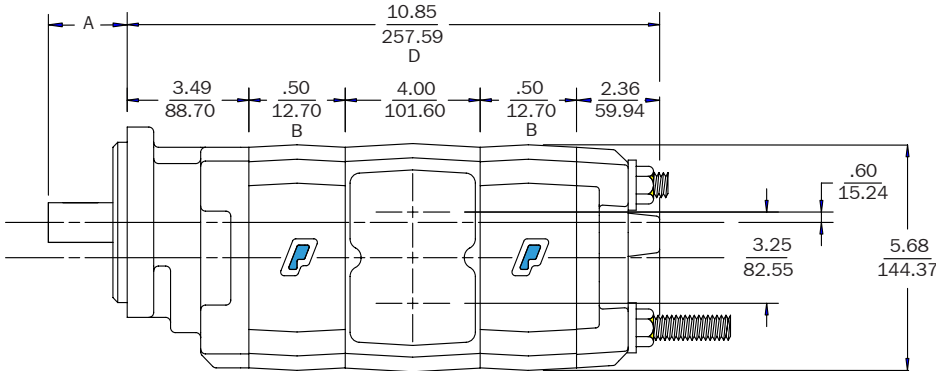
GS Global Resources • 1-800-261-8735 • gsglobalresources.com
926 Perkins Drive, Mukwonago, WI 53149

© GS GLOBAL RESOURCES, INC. ALL RIGHTS RESERVED.

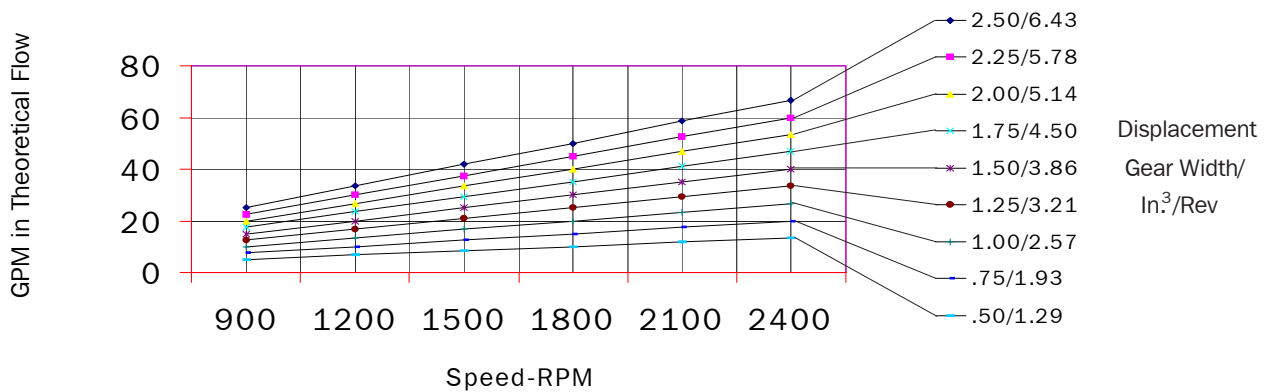
Dimensional Data (inches)



- A. See bushing series catalog for lengths and dimensions
- B. 0.50" plus gear width
- C. 5.49" plus gear width
- D. 10.85" plus total gear width



P257 Performance Chart/Specifications



GEAR WIDTH (IN)	DISPL CU IN/CC	MAX RPM	MIN RPM	MAX PSI/BAR
0.50	1.29/21	2400	600	4500/310
0.75	1.93/32	2400	600	4500/310
1.00	2.57/42	2400	600	4500/310
1.25	3.21/53	2400	600	4500/310
1.50	3.86/63	2400	600	3500/241
1.75	4.50/74	2400	600	3250/224
2.00	5.14/84	2400	600	3000/207
2.25	5.78/95	2400	600	2750/190
2.50	6.43/105	2400	600	2500/172

Permco
1500 Frost Rd.
P. O. Box 2068
Streetsboro, OH 44241
Copyright © 2006 Permco

Phone 330-626-2801
Fax 330-626-2805
e-mail info@permco.com
www.permco.com

Permco Hydraulik AG
P. O. Box 553
6343 Rotkreuz
Switzerland
e-mail heinzm@permco.com

Permco (TianJin) Hydraulics Inc., Ltd.
236 Jinbindadao Free Trade Zone
TianJin Port, China
e-mail technic@permcotj.com
www.permcotj.com © Bulletin #06-257A