

The **Penny+Giles ICT100 Contactless In-Cylinder Linear Transducer** has been specifically designed for mobile and static hydro-pneumatic actuators.

Designed primarily for the off-highway markets, the ICT100 linear transducer provides reliable, fit-and-forget position sensing of the cylinder rod in actuators with strokes up to 2000mm, with a body diameter of only 10.1mm.

It is a robust, non-contact transducer suitable for the harsh conditions of lifting and steering position applications and hydro-pneumatic active suspension systems. It works on an inductive coil principle, with virtually infinite resolution and is capable of withstanding temperatures down to -55°C and up to +200°C, with working pressures to 670Bar (10,000psi).



ICT100 IN-CYLINDER LINEAR TRANSDUCER

www.pennyandgiles.com

Penny & Giles Controls Ltd

15 Airfield Road
Christchurch
Dorset BH23 3TG
United Kingdom
+44 (0) 1202 409409
+44 (0) 1202 409475 Fax
sales@pennyandgiles.com

Penny & Giles USA

665 North Baldwin Park Boulevard
City of Industry
CA 91746
USA
+1 626 480 2150
+1 626 369 6318 Fax
us.sales@pennyandgiles.com

www.penny-giles.de

Penny & Giles GmbH

Straussenlettenstr. 7b
85053
Ingolstadt
Germany
+49 (0) 841 885567-0
+49 (0) 841 885567-67 Fax
info@penny-giles.de

1

METRIC
IF IN DOUBT ASK

2

SPECIFICATION

3

4

SCHEMATIC AND CONNECTION DETAILS

5

IDENTIFICATION

6

COIL

7

COIL

8

SCREEN

9

ISS

10

DATE

11

DRAWN

12

ECR No.

13

CHK

14

APP

15

5

16

10/03/11

17

S COLE

18

10306/31

19

M BENTLEY

20

M BENTLEY

21

ELECTRICAL STROKE LENGTH

22

25mm TO 200mm (IN 5mm INCREMENTS)

23

210mm TO 1100mm (IN 10mm INCREMENTS)

24

1120mm TO 2000mm (IN 20mm INCREMENTS)

25

TEMPERATURE RANGE (OPERATING)

26

SEE ORDERING CODE

27

TEMPERATURE RANGE (STORAGE)

28

-55°C TO +200°C

29

TEMPERATURE PERFORMANCE

30

< ± 100ppm OF ELECTRICAL STROKE/°C (+20°C TO +60°C)

31

< ± 200ppm OF ELECTRICAL STROKE/°C (-20°C TO +100°C)

32

< ± 300ppm OF ELECTRICAL STROKE/°C (-20°C TO +200°C)

33

LEAST SQUARES LINEARITY

34

SEE ORDERING CODE

35

RESOLUTION

36

INFINITE

37

MAX. WORKING PRESSURE

38

670 BAR

39

INSULATION RESISTANCE

40

YELLOW/ BLUE TO CASE >50MΩ @50Vdc

41

SCREEN TO CASE >50MΩ @50Vdc

42

GREEN WIRE BONDING RESISTANCE

43

< 1 + (0.08 x CABLE LENGTH IN METRES)Ω, e.g. 20M CABLE = 1 + (0.08 x 20) = 2.60 Ω

44

NOTES

45

1. STROKE LENGTH SPECIFIED BY CUSTOMER WITHIN RANGE 25mm TO 2000mm.

46

2. THESE SPECIFICATIONS APPLY ONLY WHEN THE ICT IS OPERATED IN CONJUNCTION WITH A Penny & Giles 'EICT' ELECTRONIC MODULE.

47

3. ELECTRONIC MODULES ARE ORDERED SEPARATELY, SEE APPROPRIATE Penny & Giles DATA SHEET(S)

48

PROGRAMMING MODULE

49

EACH TRANSDUCER IS SUPPLIED WITH A SENSOR LENGTH MODULE CALIBRATED TO MATCH THE ELECTRICAL STROKE LENGTH. THE MODULE IS PLUGGED INTO THE REQUIRED 'EICT' ELECTRONIC MODULE VIA MATING CONNECTORS.

50

IT IS IMPORTANT THE TRANSDUCER STROKE LENGTH AND THE SENSOR LENGTH MODULE STROKE LENGTH ARE MATCHED.

51

E.G. SENSOR LENGTH MODULE

52

SA203160/200

53

TRANSDUCER

54

ICT100/EM/T/200/01

55

ORDERING CODE THREADED FLANGE

56

ICT 100/___/___/___/___/___/___

57

FLANGE OPTION

58

EM = EXTERNAL METRIC FLANGE

59

EU = EXTERNAL UNIFIED FLANGE

60

RM = REVERSED THREADED METRIC FLANGE

61

RU = REVERSED THREADED UNIFIED FLANGE

62

CORE OPTION

63

SC = SLEEVED CORE

64

TM = THREADED CORE METRIC

65

TU = THREADED CORE UNIFIED

66

STROKE LENGTH IN mm

67

01 = 1.0m CABLE

68

04 = 4.0m CABLE

69

06 = 6.0m CABLE

70

LINEARITY

71

A = TYPICALLY LESS THAN ±0.2% TOTAL STROKE, ±0.25% MAX

72

B = TYPICALLY LESS THAN ±0.4% TOTAL STROKE, ±0.50% MAX

73

TEMPERATURE RANGE (OPERATING)

74

H = -20°C TO +200°C

75

L = -55°C TO +120°C

76

ORDERING CODE INTERNAL FLANGE

77

ICT 100/___/___/___/___/___/___

78

FLANGE OPTION

79

IN = INTERNAL FLANGE

80

CORE OPTION

81

SC = SLEEVED CORE

82

TM = THREADED CORE METRIC

83

TU = THREADED CORE UNIFIED

84

STROKE LENGTH IN mm

85

01 = 1.0m CABLE

86

04 = 4.0m CABLE

87

06 = 6.0m CABLE

88

LINEARITY

89

A = TYPICALLY LESS THAN ±0.2% TOTAL STROKE, ±0.25% MAX

90

B = TYPICALLY LESS THAN ±0.4% TOTAL STROKE, ±0.50% MAX

91

TEMPERATURE RANGE (OPERATING)

92

H = -20°C TO +200°C

93

L = -55°C TO +120°C

94

FOR SUGGESTED FITTING PROFILES AND DIMENSIONS, REFER TO AI202800 (H TEMP RANGE) OR AI207803 (L TEMP RANGE)

95

SCHEMATIC AND CONNECTION DETAILS

96

IDENTIFICATION

97

COIL

98

COIL

99

SCREEN

100

COLOUR

101

GREEN

102

YELLOW

103

BLUE

104

105

CASE

106

NOT CONNECTED

107

75 + STROKE LENGTH

108

20.0

109

THREAD M8 x 1.25 OR 5/16"-24 UNF.

110

THREADED CORE, INTERNAL FLANGE.

111

32.00

112

25.000

113

24.967

114

75 + STROKE LENGTH

115

12.70

116

19.30

117

THREADED CORE, THREADED FLANGE.

118

3 CORE CABLE, 19/0.125 PTFE SHEATHED, 90% BRAIDED SCREEN, FEP OUTER JACKET, 1, 4 or 6 METRES LONG, ALL STYLES.

119

75 + STROKE LENGTH

120

19.30

121

12.70

122

THREADED CORE, REVERSE THREADED FLANGE.

123

35.00mm OVER EXTENSION LIMIT, ALL CORES.

124

75 + STROKE LENGTH

125

19.30

126

12.70

127

THREADED CORE, REVERSE THREADED FLANGE.

128

35.00mm OVER EXTENSION LIMIT, ALL CORES.

129

75 + STROKE LENGTH

130

19.30

131

12.70

132

THREADED CORE, REVERSE THREADED FLANGE.

133

35.00mm OVER EXTENSION LIMIT, ALL CORES.

134

75 + STROKE LENGTH

135

19.30

136

12.70

137

THREADED CORE, REVERSE THREADED FLANGE.

138

35.00mm OVER EXTENSION LIMIT, ALL CORES.

139

75 + STROKE LENGTH

140

19.30

141

12.70

142

THREADED CORE, REVERSE THREADED FLANGE.

143

35.00mm OVER EXTENSION LIMIT, ALL CORES.

144

75 + STROKE LENGTH

145

19.30

146

12.70

147

THREADED CORE, REVERSE THREADED FLANGE.

148

35.00mm OVER EXTENSION LIMIT, ALL CORES.

149

75 + STROKE LENGTH

150

19.30

151

12.70

152

THREADED CORE, REVERSE THREADED FLANGE.

153

35.00mm OVER EXTENSION LIMIT, ALL CORES.

154

75 + STROKE LENGTH

155

19.30

156

12.70

157

THREADED CORE, REVERSE THREADED FLANGE.

158

35.00mm OVER EXTENSION LIMIT, ALL CORES.

159

75 + STROKE LENGTH

160

19.30

161

12.70

162

THREADED CORE, REVERSE THREADED FLANGE.

163

35.00mm OVER EXTENSION LIMIT, ALL CORES.

164

75 + STROKE LENGTH

165

19.30

166

12.70

167

THREADED CORE, REVERSE THREADED FLANGE.

168

35.00mm OVER EXTENSION LIMIT, ALL CORES.

169

75 + STROKE LENGTH

170

19.30

171

12.70

172

THREADED CORE, REVERSE THREADED FLANGE.

173

35.00mm OVER EXTENSION LIMIT, ALL CORES.

174

75 + STROKE LENGTH

175

19.30

176

12.70

177

THREADED CORE, REVERSE THREADED FLANGE.

178

35.00mm OVER EXTENSION LIMIT, ALL CORES.

179

75 + STROKE LENGTH

180

19.30

181

12.70

182

THREADED CORE, REVERSE THREADED FLANGE.

183

35.00mm OVER EXTENSION LIMIT, ALL CORES.

184

75 + STROKE LENGTH

185

19.30

186

12.70

187

THREADED CORE, REVERSE THREADED FLANGE.

188

35.00mm OVER EXTENSION LIMIT, ALL CORES.

189

75 + STROKE LENGTH

190

19.30

191

12.70

192

THREADED CORE, REVERSE THREADED FLANGE.

193

35.00mm OVER EXTENSION LIMIT, ALL CORES.

194

75 + STROKE LENGTH

195

19.30

196

12.70

197

THREADED CORE, REVERSE THREADED FLANGE.

198

35.00mm OVER EXTENSION LIMIT, ALL CORES.

199

75 + STROKE LENGTH

200

19.30

201

12.70

202

THREADED CORE, REVERSE THREADED FLANGE.

203

35.00mm OVER EXTENSION LIMIT, ALL CORES.

204

75 + STROKE LENGTH

205

19.30

206

12.70

207

THREADED CORE, REVERSE THREADED FLANGE.

208

35.00mm OVER EXTENSION LIMIT, ALL CORES.

209

75 + STROKE LENGTH

210

19.30

211

12.70

212

THREADED CORE, REVERSE THREADED FLANGE.

213

35.00mm OVER EXTENSION LIMIT, ALL CORES.

214

75 + STROKE LENGTH

215

19.30

216

12.70

217

THREADED CORE, REVERSE THREADED FLANGE.

218

35.00mm OVER EXTENSION LIMIT, ALL CORES.

219

75 + STROKE LENGTH

220

19.30

221

12.70

222

THREADED CORE, REVERSE THREADED FLANGE.

223

35.00mm OVER EXTENSION LIMIT, ALL CORES.

224

75 + STROKE LENGTH

225

19.30

226

12.70

227

THREADED CORE, REVERSE THREADED FLANGE.

228

35.00mm OVER EXTENSION LIMIT, ALL CORES.

229

75 + STROKE LENGTH

230

19.30

231

12.70

232

THREADED CORE, REVERSE THREADED FLANGE.

233

35.00mm OVER EXTENSION LIMIT, ALL CORES.

234

75 + STROKE LENGTH

235

19.30

236

12.70

237

THREADED CORE, REVERSE THREADED FLANGE.

238

35.00mm OVER EXTENSION LIMIT, ALL CORES.

239

75 + STROKE LENGTH

240

19.30

241

12.70

242

THREADED CORE, REVERSE THREADED FLANGE.

243

35.00mm OVER EXTENSION LIMIT, ALL CORES.

244

75 + STROKE LENGTH

245

19.30

246

12.70

247

THREADED CORE, REVERSE THREADED FLANGE.

248

35.00mm OVER EXTENSION LIMIT, ALL CORES.

249

75 + STROKE LENGTH

250

19.30

251

12.70

252

THREADED CORE, REVERSE THREADED FLANGE.

253

35.00mm OVER EXTENSION LIMIT, ALL CORES.

254

75 + STROKE LENGTH

255

19.30

256

12.70

257

THREADED CORE, REVERSE THREADED FLANGE.

258

35.00mm OVER EXTENSION LIMIT, ALL CORES.

259

75 + STROKE LENGTH

260

19.30

261

12.70

262

THREADED CORE, REVERSE THREADED FLANGE.

263

35.00mm OVER EXTENSION LIMIT, ALL CORES.

264

75 + STROKE LENGTH

265

19.30

266

12.70

267

THREADED CORE, REVERSE THREADED FLANGE.

268

35.00mm OVER EXTENSION LIMIT, ALL CORES.

269

75 + STROKE LENGTH

270

19.30

271

12.70

272

THREADED CORE, REVERSE THREADED FLANGE.

273

35.00mm OVER EXTENSION LIMIT, ALL CORES.

274

75 + STROKE LENGTH

275

19.30

276

12.70

277

THREADED CORE, REVERSE THREADED FLANGE.

278

35.00mm OVER EXTENSION LIMIT, ALL CORES.

279

75 + STROKE LENGTH

280

19.30

281

12.70

282

THREADED CORE, REVERSE THREADED FLANGE.

283

35.00mm OVER EXTENSION LIMIT, ALL CORES.

284

75 + STROKE LENGTH

285

19.30

286

12.70

287

THREADED CORE, REVERSE THREADED FLANGE.

288

35.00mm OVER EXTENSION LIMIT, ALL CORES.

289

75 + STROKE LENGTH

290

19.30

291

12.70

292

THREADED CORE, REVERSE THREADED FLANGE.

293

35.00mm OVER EXTENSION LIMIT, ALL CORES.

294

75 + STROKE LENGTH

295

19.30

296

12.70

297

THREADED CORE, REVERSE THREADED FLANGE.

298

35.00mm OVER EXTENSION LIMIT, ALL CORES.

299

75 + STROKE LENGTH

300

19.30

301

12.70

302

THREADED CORE, REVERSE THREADED FLANGE.

303

35.00mm OVER EXTENSION LIMIT, ALL CORES.

304

75 + STROKE LENGTH

305

19.30

306

12.70

307

THREADED CORE, REVERSE THREADED FLANGE.

308

35.00mm OVER EXTENSION LIMIT, ALL CORES.

309

75 + STROKE LENGTH

310

19.30

311

12.70

312

THREADED CORE, REVERSE THREADED FLANGE.

313

35.00mm OVER EXTENSION LIMIT, ALL CORES.

314

75 + STROKE LENGTH

315

19.30

316

12.70

317

THREADED CORE, REVERSE THREADED FLANGE.

318

35.00mm OVER EXTENSION LIMIT, ALL CORES.

319

75 + STROKE LENGTH

320

19.30

321

12.70

322

THREADED CORE, REVERSE THREADED FLANGE.

323

35.00mm OVER EXTENSION LIMIT, ALL CORES.

324

75 + STROKE LENGTH

325

19.30

326

12.70

327

THREADED CORE, REVERSE THREADED FLANGE.

328

35.00mm OVER EXTENSION LIMIT, ALL CORES.

329

75 + STROKE LENGTH

330

19.30

331

12.70

332

THREADED CORE, REVERSE THREADED FLANGE.

333

35.00mm OVER EXTENSION LIMIT, ALL CORES.

334

75 + STROKE LENGTH

335

19.30

336

12.70

337

THREADED CORE, REVERSE THREADED FLANGE.

338

35.00mm OVER EXTENSION LIMIT, ALL CORES.

339

75 + STROKE LENGTH

340

19.30

341

12.70

342

THREADED CORE, REVERSE THREADED FLANGE.

343

35.00mm OVER EXTENSION LIMIT, ALL CORES.

344

75 + STROKE LENGTH

345

19.30

346

12.70

347

THREADED CORE, REVERSE THREADED FLANGE.

348

35.00mm OVER EXTENSION LIMIT, ALL CORES.

349

75 + STROKE LENGTH

350

19.30

351

12.70

352

THREADED CORE, REVERSE THREADED FLANGE.

353

35.00mm OVER EXTENSION LIMIT, ALL CORES.

354

75 + STROKE LENGTH

355

19.30

356

12.70

357

THREADED CORE, REVERSE THREADED FLANGE.

358

35.00mm OVER EXTENSION LIMIT, ALL CORES.

359

75 + STROKE LENGTH

360

19.30

361

12.70

362

THREADED CORE, REVERSE THREADED FLANGE.

363

35.00mm OVER EXTENSION LIMIT, ALL CORES.

364

75 + STROKE LENGTH

365

19.30

366

12.70

367

THREADED CORE, REVERSE THREADED FLANGE.

368

35.00mm OVER EXTENSION LIMIT, ALL CORES.

369

75 + STROKE LENGTH

370

19.30

371

12.70

372

THREADED CORE, REVERSE THREADED FLANGE.

373

35.00mm OVER EXTENSION LIMIT, ALL CORES.

374

75 + STROKE LENGTH

375

19.30

376

12.70

377

THREADED CORE, REVERSE THREADED FLANGE.

378

35.00mm OVER EXTENSION LIMIT, ALL CORES.

379

75 + STROKE LENGTH

380

19.30

381

12.70

382

THREADED CORE, REVERSE THREADED FLANGE.

383

35.00mm OVER EXTENSION LIMIT, ALL CORES.

384

75 + STROKE LENGTH

385

19.30

386

12.70

387

THREADED CORE, REVERSE THREADED FLANGE.

388

35.00mm OVER EXTENSION LIMIT, ALL CORES.

389

75 + STROKE LENGTH

390

19.30

391

12.70

392

THREADED CORE, REVERSE THREADED FLANGE.

393

35.00mm OVER EXTENSION LIMIT, ALL CORES.

394

75 + STROKE LENGTH

395

19.30

396

12.70

397

THREADED CORE, REVERSE THREADED FLANGE.

398

35.00mm OVER EXTENSION LIMIT, ALL CORES.

399

75 + STROKE LENGTH

400

19.30

401

12.70

402

THREADED CORE, REVERSE THREADED FLANGE.

403

35.00mm OVER EXTENSION LIMIT, ALL CORES.

404

75 + STROKE LENGTH

405

19.30

406

12.70

407

THREADED CORE, REVERSE THREADED FLANGE.

408

35.00mm OVER EXTENSION LIMIT, ALL CORES.

409

75 + STROKE LENGTH

410

19.30

411

12.70

412

THREADED CORE, REVERSE THREADED FLANGE.

413

35.00mm OVER EXTENSION LIMIT, ALL CORES.

414

75 + STROKE LENGTH

415

19.30

416

12.70

417

THREADED CORE, REVERSE THREADED FLANGE.

418

35.00mm OVER EXTENSION LIMIT, ALL CORES.

419

75 + STROKE LENGTH

420

19.30

421

12.70

422

THREADED CORE, REVERSE THREADED FLANGE.

423

35.00mm OVER EXTENSION LIMIT, ALL CORES.

424

75 + STROKE LENGTH

425

19.30

426

12.70

427

THREADED CORE, REVERSE THREADED FLANGE.

428

35.00mm OVER EXTENSION LIMIT, ALL CORES.

429

75 + STROKE LENGTH

430

19.30

431

12.70

432

THREADED CORE, REVERSE THREADED FLANGE.

433

35.00mm OVER EXTENSION LIMIT, ALL CORES.

434

75 + STROKE LENGTH

435

19.30

436

12.70

437

THREADED CORE, REVERSE THREADED FLANGE.

438

35.00mm OVER EXTENSION LIMIT, ALL CORES.

439

75 + STROKE LENGTH

440

19.30

441

12.70

442

THREADED CORE, REVERSE THREADED FLANGE.

443

35.00mm OVER EXTENSION LIMIT, ALL CORES.

444

75 + STROKE LENGTH

445

19.30

446

12.70

447

THREADED CORE, REVERSE THREADED FLANGE.

448

35.00mm OVER EXTENSION LIMIT, ALL CORES.

449

75 + STROKE LENGTH

450

19.30

451

12.70

452

THREADED CORE, REVERSE THREADED FLANGE.

453

35.00mm OVER EXTENSION LIMIT, ALL CORES.

454

75 + STROKE LENGTH

455

19.30

456

12.70

457

THREADED CORE, REVERSE THREADED FLANGE.

458

35.00mm OVER EXTENSION LIMIT, ALL CORES.

459

75 + STROKE LENGTH

460

19.30

461

12.70

462

THREADED CORE, REVERSE THREADED FLANGE.

463

35.00mm OVER EXTENSION LIMIT, ALL CORES.

464

75 + STROKE LENGTH

465

19.30

466

12.70

467

THREADED CORE, REVERSE THREADED FLANGE.

468

35.00mm OVER EXTENSION LIMIT, ALL CORES.

469

75 + STROKE LENGTH

470

19.30

471

12.70

472

THREADED CORE, REVERSE THREADED FLANGE.

473

35.00mm OVER EXTENSION LIMIT, ALL CORES.

474

75 + STROKE LENGTH

475

19.30

476

12.70

477

THREADED CORE, REVERSE THREADED FLANGE.

478

35.00mm OVER EXTENSION LIMIT, ALL CORES.

479

75 + STROKE LENGTH

480

19.30

481

12.70

482

THREADED CORE, REVERSE THREADED FLANGE.

483

35.00mm OVER EXTENSION LIMIT, ALL CORES.

484

75 + STROKE LENGTH

485

19.30

486

12

METRIC
IF IN DOUBT ASK

INSTALLATION KIT.

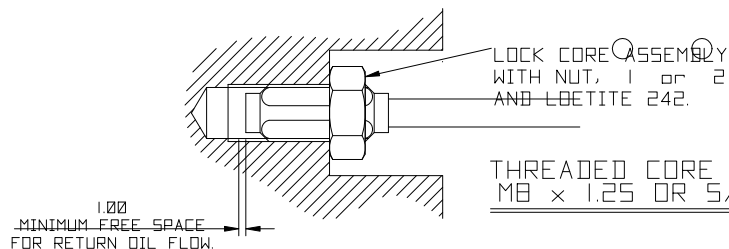
PRODUCTION CONTROL TO ENSURE A COPY OF THIS
DRAWING IS INCLUDED WITH EACH INSTALLATION KIT.

ITEM No.	DESCRIPTION	P+G PART No.	QTY.
1	FULL NUT M8 x 1.25.	X63-072-380	1
2	FULL NUT 5/16"-24 UNF.	X63-111-002	1
3	WAVEY WASHER	X63-112-012	3
4	SHIM WASHER	P202677	1
5	CIRCLIP	X64-005-107	1
6	'O' RING (17 x 2)	X64-194-007	1
7	'O' RING (21 x 2.5)	X64-194-009	1
8	ANTI EXTRUSION RING	X64-074-003	1
9	M5 CONICAL SET SCREW	X63-096-506	1
10	COPY OF AI202800	AI202800	1
11	LABEL (SUPPLIED LOOSE)	P200919	1
12	INSTALLATION KIT LABEL	P203193	1

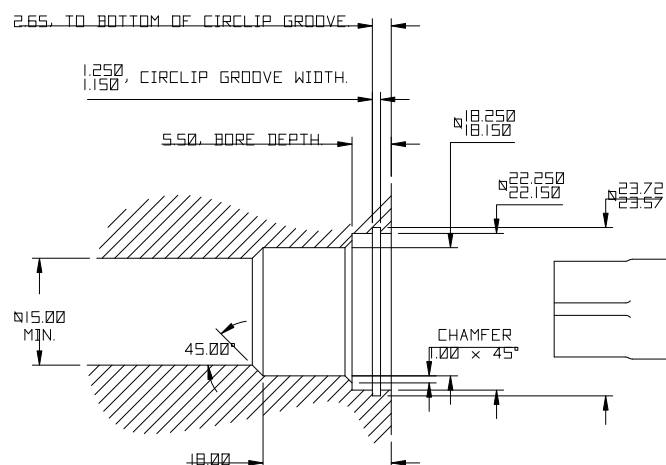


GS Global Resources • 1-800-261-8735 • gsglobalresources.com
926 Perkins Drive, Mulvane, KS 67149
© GS GLOBAL RESOURCES, INC. ALL RIGHTS RESERVED.

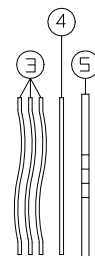
ITEM 11 LABEL IS SUPPLIED
FOR THE CUSTOMER TO RECORD ICT
ORDERING CODE AND TO BE FITTED IN
VISIBLE LOCATION ADJACENT TO
SENSOR FOR RE-ORDERING REFERENCE.



THREADED CORE ASSEMBLY
M8 x 1.25 OR 5/16"-24 UNF.

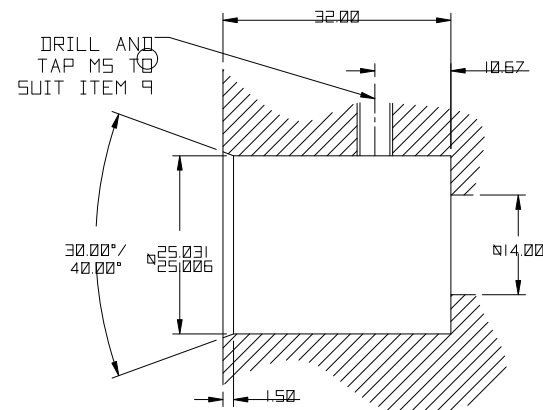


SLEEVED
CORE
ASSEMBLY



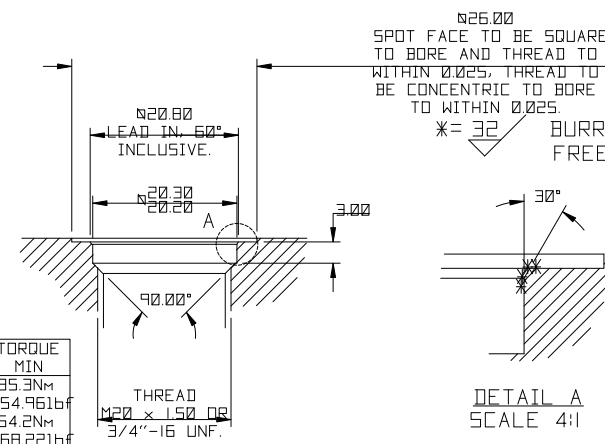
INTERNAL FLANGE MACHINING DETAILS.

TO SEAL USE ITEMS 7 & 8



THREADED FLANGE MACHINING DETAILS.

TO SEAL USE ITEM 6



THREAD	TORQUE MIN
M20x1.5	85.3Nm
3/4"-16UNF	754.961bf
	64.2Nm
	568.221bf

THREAD
M20 x 1.50 OR
3/4"-16 UNF.

DETAIL A
SCALE 4:1

SCALE 1:1 UNLESS STATED	IF CONTROL DIMENSIONS (K) ARE SPECIFIED THEY ARE TO BE SUBJECT TO 100% INSPECTION OR STATISTICAL PROCESS CONTROL.	D No ICT100 FIRST USED ON	MATERIAL -	TOLERANCES: IN-LINE WITH PENNY & GILES STANDARDS 33-501 SURFACE TEXTURE VALUES IN MICROMETRES (µ) TO BS1134PT2. ALL MACHINED SURFACES TO BE 1.6 ALL SCREW THREADS TO BS3643 PT2. EXTERNAL CLASS: 6h INTERNAL CLASS: 6h	TITLE SUGGESTED ICT100 INSTALLATION DETAILS AND INSTALLATION KIT 'H' TEMPERATURE RANGE	PENNY + GILES PART NUMBER: AI202800	A3 SHT 1 OF 1 SHTS
THIRD ANGLE PROJECTION TO BS 8888		REF.	FINISH -	ANGULAR ±1° LINEAR 0.1mm 0.05mm 0.02mm 0.01mm MACHINING +/- 0.5mm +/- 0.2mm +/- 0.1mm +/- 0.05mm BREAK EDGE 0.05 - 0.15mm FILLET RADS 0.1 - 0.3mm UNLESS OTHERWISE STATED			

METRIC
IF IN DOUBT ASK

INSTALLATION KIT.

PRODUCTION CONTROL TO ENSURE A COPY OF THIS
DRAWING IS INCLUDED WITH EACH INSTALLATION KIT.

ITEM No.	DESCRIPTION	P+G PART No.	QTY.
1	FULL NUT M8 x 1.25.	X63-072-380	1
2	FULL NUT 5/16"-24 UNF.	X63-111-002	1
3	WAVEY WASHER	X63-112-012	3
4	SHIM WASHER	P202677	1
5	CIRCLIP	X64-005-107	1
6	'O' RING (17 x 2)	X64-213-007	1
7	'O' RING (21 x 2.5)	X64-213-009	1
8	ANTI EXTRUSION RING	X64-074-003	1
9	M5 CONICAL SET SCREW	X63-096-506	1
10	COPY OF AI207803	AI207803	1
11	LABEL (SUPPLIED LOOSE)	P200919	1
12	INSTALLATION KIT LABEL	P207804	1

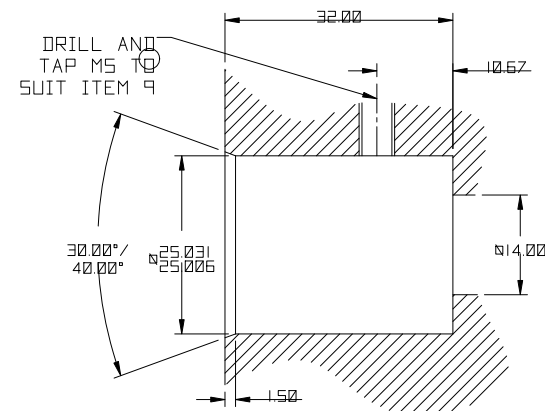
BECAUSE OF THE MULTIPLICITY OF POTENTIAL APPLICATIONS
THE INSTALLATION DETAILS SHOWN ARE SUGGESTIONS ONLY.
THE USER SHOULD ENSURE THAT THE DESIGN, METHOD OF ASSEMBLY
AND MATERIALS USED ARE SATISFACTORY FOR THE INSTALLATION.



ITEM 11 LABEL IS SUPPLIED
FOR THE CUSTOMER TO RECORD ICT
ORDERING CODE AND TO BE FITTED IN
VISIBLE LOCATION ADJACENT TO
SENSOR FOR RE-ORDERING REFERENCE.

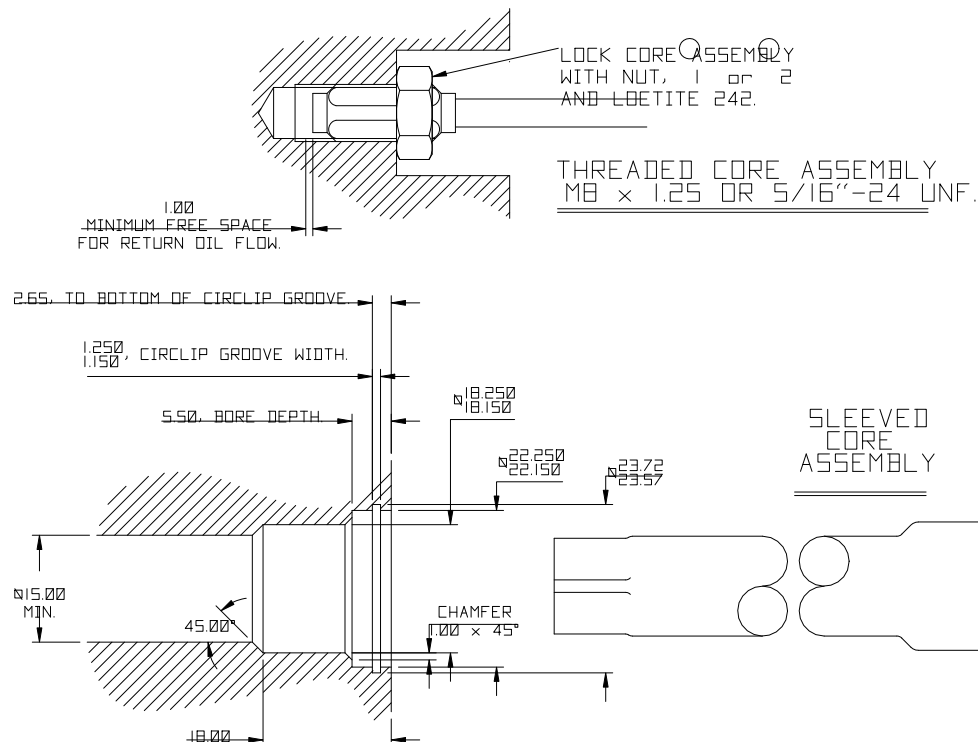
INTERNAL FLANGE MACHINING DETAILS.

TO SEAL USE ITEMS 7 & 8

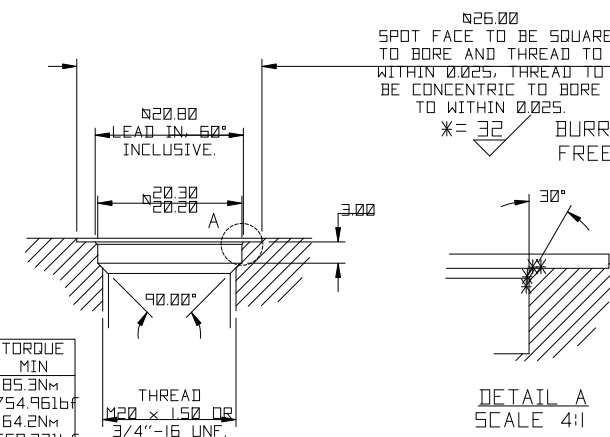
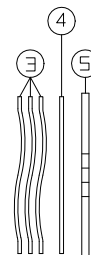


THREADED FLANGE MACHINING DETAILS.

TO SEAL USE ITEM 6



SLEEVED CORE ASSEMBLY



DETAIL A
SCALE 4:1

THREAD	TORQUE MIN
M20x1.5	85.3Nm
3/4"-16UNF	754.961bf
	64.2Nm
	568.221bf

THREAD
M20 x 1.50 OR
3/4"-16 UNF.

SCALE 1:1 UNLESS STATED	IF CONTROL DIMENSIONS (K) ARE SPECIFIED THEY ARE TO BE SUBJECT TO 100% INSPECTION OR STATISTICAL PROCESS CONTROL	D No ICT100 FIRST USED ON	MATERIAL -	TOLERANCES: IN-LINE WITH PENNY & GILES STANDARDS 33-501 SURFACE TEXTURE VALUES IN MICROMETRES (µ) TO BS1134PT2. ALL MACHINED SURFACES TO BE 1.6 ALL SCREW THREADS TO BS3643 PT2 EXTERNAL CLASS: 6h INTERNAL CLASS: 6h	TITLE SUGGESTED ICT100 INSTALLATION DETAILS AND INSTALLATION KIT 'L' TEMPERATURE RANGE	PENNY + GILES PART NUMBER: AI207803	A3 SHT 1 OF 1 SHTS
THIRD ANGLE PROJECTION TO BS 8888	REF.	FINISH -	UNLESS OTHERWISE STATED				