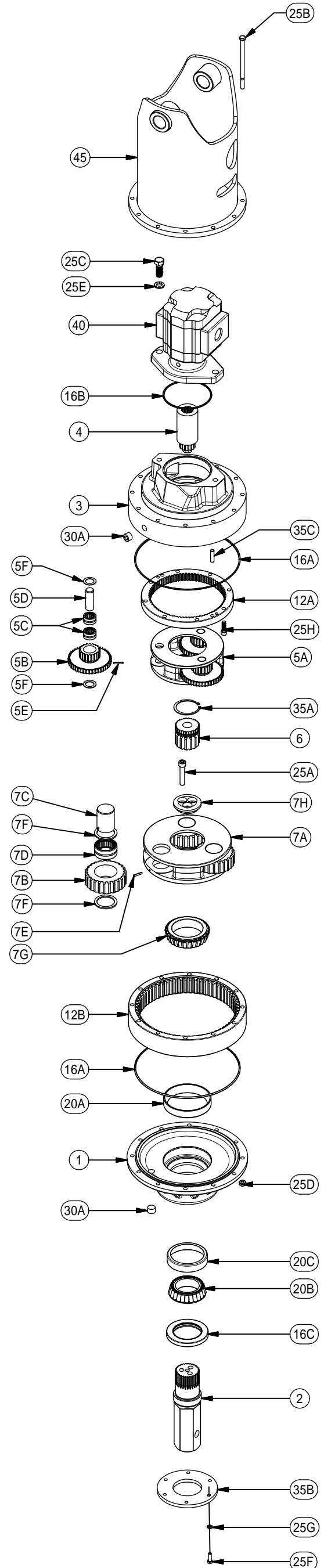




S77-P DIGGERS EFFECTIVE  
FROM: SN 31296 01-29-02  
TO: CURRENT

PARTS LIST						
ASSY	ITEM	QTY	DESCRIPTION	S77BA	S77BC	S77BD
	1	1	BEARING CARRIER	72-004-1102	72-004-1102	72-004-1102
2		(1)	OUTPUT SHAFTS			
	2	1	OUTPUT SHAFT 2-1/2" HEX	71-004-4022	71-004-4022	71-004-4022
	2	1	OUTPUT SHAFT 2-5/8" HEX	71-004-4032	71-004-4032	71-004-4032
	3	1	TOP CASE	72-004-3154	72-004-3154	72-004-3154
	4	1	INPUT GEAR	72-004-0132	72-004-0122	72-004-0082
5	-	(1)	CARRIER ASSY - PRI	71-005-1691	71-005-1701	72-005-2011
	5A	1	CARRIER - PRI	71-004-0113	71-004-0433	71-004-0433
	5B	3	CLUSTER GEAR	71-004-0132	71-004-0412	72-004-0182
	5C	6	BEARING	01-105-0010	01-105-0010	01-105-0010
	5D	3	PLANET SHAFT	71-004-0121	71-004-0121	71-004-0121
	5E	3	ROLL PIN	01-153-0020	01-153-0020	01-153-0020
	5F	6	WASHER - PRI PLANET	71-004-0861	71-004-0861	71-004-0861
	6	1	SUN GEAR - SECONDARY	71-004-0102	71-004-0102	71-004-0102
7		(1)	CARRIER ASSY - SEC	71-005-2352	71-005-2352	71-005-2352
	7A	1	CARRIER - SEC	71-004-2332	71-004-2332	71-004-2332
	7B	3	PLANET GEAR - SEC	71-004-0092	71-004-0092	71-004-0092
	7C	3	PLANET SHAFT - SEC	71-004-0081	71-004-0081	71-004-0081
	7D	3	BEARING	01-105-0020	01-105-0020	01-105-0020
	7E	3	ROLL PIN	01-153-0020	01-153-0020	01-153-0020
	7F	6	WASHER - SEC PLANET	71-004-0871	71-004-0871	71-004-0871
	7G	1	BRG CONE	01-102-0100	01-102-0100	01-102-0100
	7H	1	PLATE - BEARING RETAINER	71-004-2322	71-004-2322	71-004-2322
12	-	-	RING GEARS			
	12A	1	RING GEAR - PRI	71-004-0142	71-004-0142	71-004-0142
	12B	1	RING GEAR - SEC	71-004-0042	71-004-0042	71-004-0042
16	-	-	SEALS & O-RINGS			
	16A	2	O-RING	01-402-0020	01-402-0020	01-402-0020
	16B	1	O-RING	01-402-0010	01-402-0010	01-402-0010
	16C	1	OUTPUT SHAFT SEAL	01-405-0540	01-405-0540	01-405-0540
20	-	-	OUTPUT SHAFT BEARINGS			
	20A	1	BEARING CUP	01-103-0090	01-103-0090	01-103-0090
	20B	1	BEARING CONE	01-102-0090	01-102-0090	01-102-0090
	20C	1	BEARING CUP	01-103-0080	01-103-0080	01-103-0080
25	-	-	HARDWARE			
	25A	3	SHCS (1/2-20 X 2-1/2 GR8)	01-150-1480	01-150-1480	01-150-1480
	25B	12	HHCS (3/8-16X6-1/2 GR5)	01-150-0020	01-150-0020	01-150-0020
	25C	2	HHCS (5/8-11 X 1-3/4)	01-150-0110	01-150-0110	01-150-0110
	25D	12	HEX FLANGE NUT	01-158-0360	01-158-0360	01-158-0360
	25E	2	LOCKWASHER - 5/8 ZINC PLATED	01-166-0040	01-166-0040	01-166-0040
	25F	6	5/16-18 X 1, GR5 HEX HEAD CAP SCREW	01-150-1790	01-150-1790	01-150-1790
	25G	6	LOCK WASHER; 5/16	01-166-0110	01-166-0110	01-166-0110
	25H	8	SHCS (3/8-16 X 1-1/4 GR 8)	01-150-0520	01-150-0520	01-150-0520
30			PLUGS & GREASE ZERKS			
	30A	2	PIPE PLUG (3/4 NPT MAGNETIC)	01-207-0010	01-207-0010	01-207-0010
35	-	-	MISCELLANEOUS			
	35A	1	RETAINING RING	01-160-0030	01-160-0030	01-160-0030
	35B	1	SEAL PROTECTOR	72-004-1092	72-004-1092	72-004-1092
	35C	2	DOWEL PIN	01-152-0070	01-152-0070	01-152-0070
	40	1	MOTOR	01-304-0590	01-304-0590	01-304-0590
45		(1)	BAIL ASSEMBLY			
		1	BAIL ASSEMBLY BACK HOE	72-005-3482	72-005-3482	72-005-3482
		1	BAIL ASSEMBLY STD	71-005-0932	71-005-0932	71-005-0932



XS77-Pab 08-22-11 HWP

SEAL KIT: PN 76-016-2011