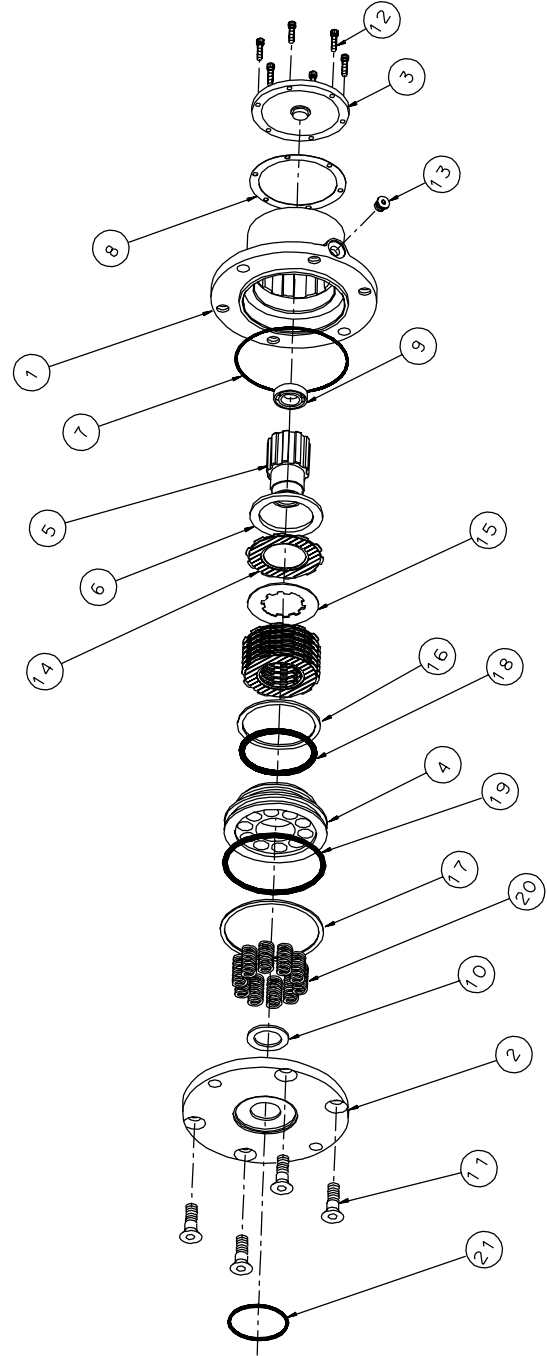




THIS DRAWING IS EFFECTIVE  
 FROM: S/N 14926, SEPT. 1989  
 TO: CURRENT  
 REF: X93-DE

		MODELS				PART NO.	DESCRIPTION
		93-110		93-120			
I <sub>TE</sub> M	QTY	931-NF	931-NR	932-NF	932-NR		
1	-	-	1	1	93-004-0894	CASE - 93-120	
1	1	1	-	-	93-004-0884	CASE - 93-110	
2	1	-	1	-	93-004-1113	COVER - NF	
2	-	1	-	1	93-004-1123	COVER - NR	
3	1	1	1	1	93-003-1061	END CAP	
4	1	1	1	1	90-004-1182	PISTON	
5	-	-	1	1	93-004-1103	SHAFT- 13T (93-120)	
5	1	1	-	-	93-004-1083	SHAFT- 13T (93-110)	
6	*	*	*	*	90-004-1031	SPACER	
7	1	1	1	1	01-402-0580	O-RING SEAL	
8	1	1	1	1	90-004-1111	BASE GASKET	
9	1	1	1	1	01-100-0200	BEARING	
10	1	1	1	1	01-112-0290	THRUST BEARING	
11	4	-	4	-	01-150-1390	HHCS (1/2-13 X 1)	
11	-	4	-	4	01-150-1440	FH SCS (1/2-13 X 1)	
12	6	6	6	6	01-150-1030	SHCS (#10-24 X 3/4)	
13	1	1	1	1	01-208-0020	HOLLOW HEX PLUG	
14	*	*	*	*	01-288-0010	FRICTION DISC	
15	*	*	*	*	01-288-0020	SEPARATOR PLATE	
16	1	1	1	1	01-400-0120	BACK-UP RING	
17	1	1	1	1	01-400-0140	BACK-UP RING	
18	1	1	1	1	01-402-0450	O-RING	
19	1	1	1	1	01-402-0470	O-RING	
20	*	*	*	*	01-261-0290	SPRING	
21	1	1	1	1	01-402-0590	O-RING-MOTOR MOUNT	



### REPAIR KITS FOR SERIES 93 BRAKES

- FRICTION DISC KIT**      93-016-1211  
 01-288-0010    FRICTION PLATES (8)
- SEPARATOR PLATE KIT**      93-016-1221  
 01-288-0020    SEPARATOR PLATE (11)
- SEAL KIT**      93-016-1181  
 01-400-0120    BACK-UP RING, PISTON (1)  
 01-400-0140    BACK-UP RING, PISTON (1)  
 01-402-0450    O-RING, PISTON (1)  
 01-402-0470    O-RING, PISTON (1)  
 01-402-0580    O-RING, CASE SEAL (1)  
 01-402-0590    O-RING, MOTOR PILOT (1)  
 90-004-1101    GASKET, COVER (1)  
 90-004-1111    GASKET, BASE (1)  
 90-004-1171    GASKET, MOTOR (1)
- MASTER REBUILD KIT**      93-015-1311  
 93-016-1211    FRICTION DISC KIT (1)  
 93-016-1181    SEAL KIT (1)  
 01-100-0120    BEARING (1)

Due to the many combinations of torques and release pressures available for the 93-110, it is impossible to detail each style and supply a repair kit for each individual model. The information listed in this manual is representative of all 93-110 brakes. The repair kits listed below will work with all combinations of torque vs. release pressure, input mountings and friction plates. It is entirely possible to have "extra" parts left over from the repair kits after you have completed the repair or maintenance. If you are not sure about what is required for your brake and its configuration, please contact Eskridge.

\* QUANTITIES OF FRICTION DISCS, SEPARATOR PLATES, SPACERS AND SPRINGS MAY VARY DEPENDING ON CUSTOMERS SPECIFIC TORQUE RATING AND RELEASE PRESSURE REQUIREMENTS. 93-120 BRAKES REQUIRING A FULL COMPLEMENT OF FRICTION DISCS (QTY 10) AND SEPARATOR PLATES (QTY 9) WILL NOT INCLUDE ANY SPACERS (ITEM NO. 6). 93-110 BRAKES REQUIRING A FULL COMPLEMENT OF FRICTION DISCS (QTY 7) AND SEPARATOR PLATES (QTY 6) WILL NOT INCLUDE ANY SPACERS (ITEM NO. 6). ONE SPACER TAKES THE PLACE OF ONE FRICTION DISC AND ONE SEPARATOR PLATE.

\*\*QUANTITY OF SPRINGS (10 MAX) DETERMINES BRAKE HOLDING TORQUE AND RELEASE PRESSURE.