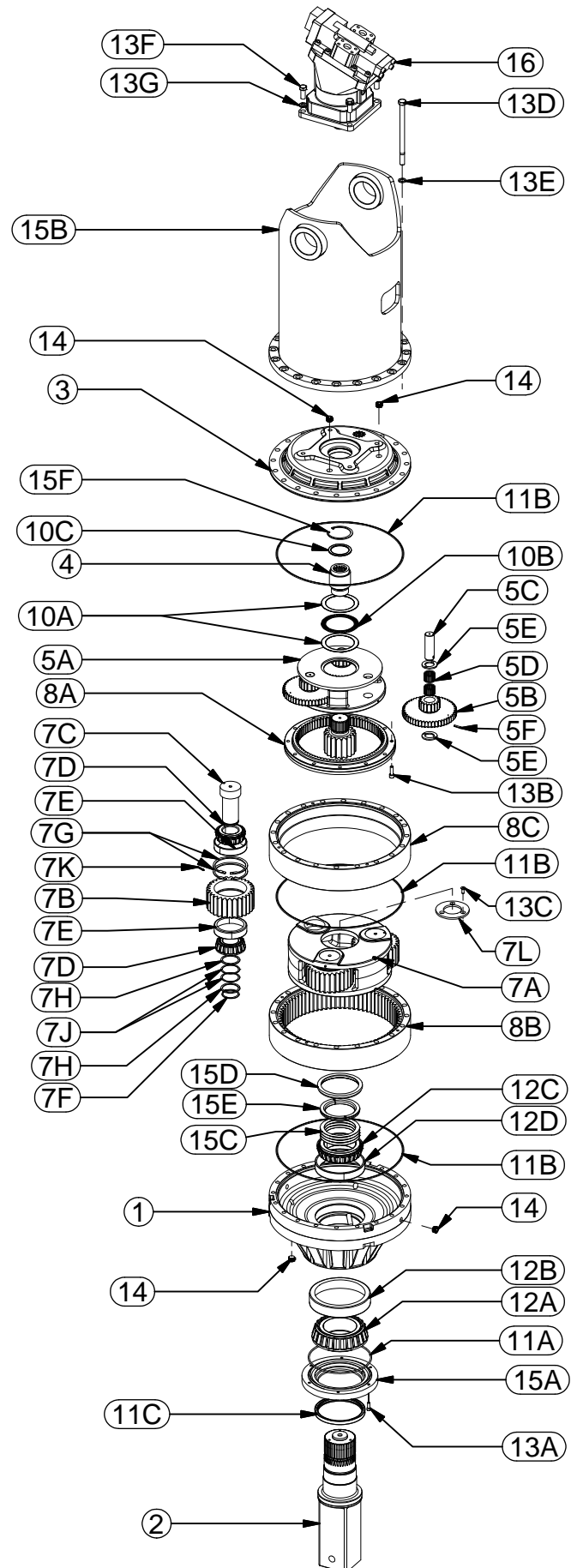




MODEL 100096-54F97E5 DIGGER

ITEM	QTY	DESCRIPTION	PART NO.
1	1	BASE-"F" FLANGLSS	60-004-3014
2	1	OUTPUT SHAFT: 5-1/4" SQUARE	60-004-4222L
3	1	COVER (4 BOLT "E")	60-004-1564
4	1	INPUT GEAR	60-004-1462
5	(1)	CARRIER ASSEMBLY- PRIMARY	60-005-2043
5A	1	CARRIER	60-004-1024
5B	3	CLUSTER GEAR	60-004-1182
5C	3	PLANET SHAFT	60-004-1272
5D	6	BEARING (CAGE & ROLLER)	01-105-0510
5E	6	THRUST WASHER	60-004-1881
5F	3	ROLL PIN	01-153-0150
6	1	SUN GEAR	60-004-1222
7	(1)	CARRIER ASSEMBLY- SECONDARY	60-005-2083
7A	1	CARRIER	60-004-1044
7B	3	PLANET GEAR	60-004-1232
7C	3	PLANET SHAFT	60-004-1262
7D	6	BEARING CONE	01-102-0210
7E	6	BEARING CUP	01-103-0210
7F	3	RETAINING RING	01-160-0490
7G	6	RETAINING RING	01-160-0500
7H	6	WASHER	60-004-1291
7J	6	SHIM	60-004-1321
7K	3	ROLL PIN	01-153-0150
7L	1	PLATE - SEC CARRIER RETAINER	60-004-1352
8	RING GEARS & SPACER		
8A	1	RING GEAR - PRIMARY	60-004-1213
8B	1	RING GEAR - SECONDARY	60-004-1243
8C	1	RING SPACER	60-004-1253
10	THRUST WASHERS & BEARINGS		
10A	2	BEARING THRUST RACE - PRIMARY	01-112-0350
10B	1	BEARING - PRIMARY THRUST	01-112-0340
10C	1	BEARING THRUST RACE - INPUT	01-112-0060
11	SEALS & O-RINGS		
11A	1	O-RING	01-402-0670
11B	3	O-RING	01-402-0660
11C	1	OUTPUT SHAFT SEAL	01-405-0810
12	OUTPUT SHAFT BEARINGS		
12A	1	OUTER CONE	01-102-0190
12B	1	OUTER CUP	01-103-0190
12C	1	INNER CONE	01-102-0220
12D	1	INNER CUP	01-103-0220
13	HARDWARE		
13A	6	SHCS (3/8-16 X 1) GR8	01-150-1110
13B	12	SHCS (1/2-13 X 1-1/2) GR8	01-150-0570
13C	3	FHS C.S. (3/8-24 X 1)GR8	01-150-1590
13D	20	HHCS (3/4-10 X 11.5) GR8	01-150-1720
13E	20	HARDWASHER (3/4 X 1.25 OD)	01-166-0350
13F	4	HHCS (3/4-10 X 1.75) GR8	01-150-1890
13G	4	LOCKWASHER (3/4 MED)	01-166-0360
14	6	PIPE PLUG (3/4 NPT MAGNETIC)	01-207-0100
15	MISCELLANEOUS		
15A	1	SEAL CARRIER	60-004-1922
15B	1	BAIL ASSEMBLY	60-005-1622
15C	*	SHIM	60-004-1311
15D	1	LOCK RING	60-004-1472
15E	1	SPLIT RING (L-SEGMENT)	60-004-1482
15F	1	RETAINING RING	01-160-0510
16	1	MOTOR	01-304-0970



X100096-54F97E5aa 05-12-10 ECN- HWP