

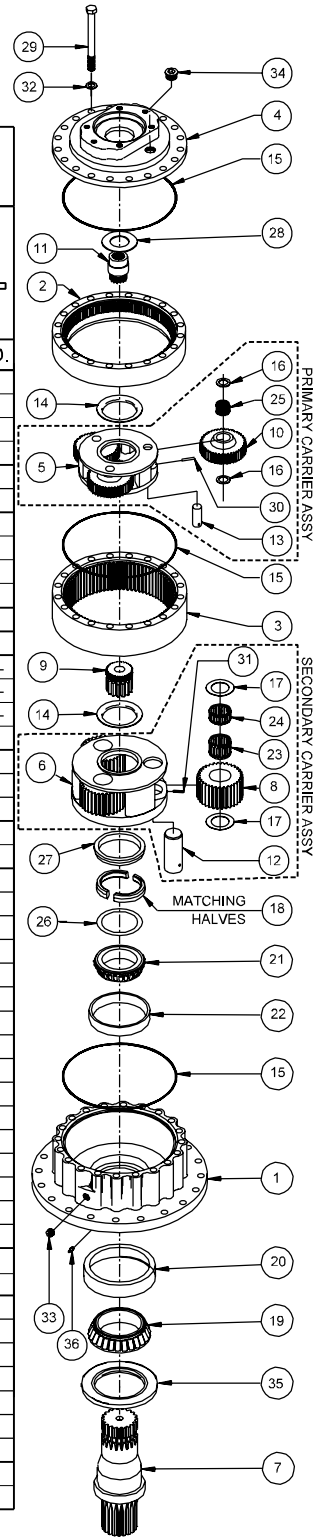


# ESKRIDGE

## MODEL 252L

EQUIPPED WITH PATENTED "LOAD-N-LOCK"<sup>®</sup> SHAFT RETENTION SYSTEM. (U.S. PATENT NO. 5746517).

| ITEM | QTY                                   | RATIO →                            | EFFECTIVE:<br>FROM: S/N 28500 01/01/97<br>TO: CURRENT |                    |                    |                  |                      |                    |          |
|------|---------------------------------------|------------------------------------|---|--------------------|--------------------|------------------|----------------------|--------------------|----------|
|      |                                       |                                    | DESCRIPTION   | PART NO.           | PART NO.           | PART NO.         | PART NO.             | PART NO.           | PART NO. |
| 1    | 1                                     | 20.25:1                            | 4.3125:1<br>4.6957:1                                  | 4.3125:1<br>6.00:1 | 6.30:1<br>4.6957:1 | 6.30:1<br>6.00:1 | 8.5714:1<br>4.6957:1 | 8.5714:1<br>6.00:1 |          |
|      |                                       | 250A BASE - ROUND                  | 25-004-3012   | 25-004-3012        | 25-004-3012        | 25-004-3012      | 25-004-3012          | 25-004-3012        |          |
|      |                                       | 250F BASE - FLANGELESS             | 25-004-3022   | 25-004-3022        | 25-004-3022        | 25-004-3022      | 25-004-3022          | 25-004-3022        |          |
|      |                                       | 250Q BASE - ECCENTRIC PILOT        | 25-004-3152   | 25-004-3152        | 25-004-3152        | 25-004-3152      | 25-004-3152          | 25-004-3152        |          |
|      |                                       | CUSTOM BASE                        | -   | -                  | -                  | -                | -                    | -                  |          |
| 2    | 1                                     |                                    |   |                    |                    |                  |                      |                    |          |
| 3    | 1                                     |                                    |   |                    |                    |                  |                      |                    |          |
| 4    | 1                                     |                                    |   |                    |                    |                  |                      |                    |          |
|      |                                       | A - SAE 'A' COVER                  | 25-005-2061   | 25-005-2061        | 25-005-2061        | 25-005-2061      | 25-005-2061          | 25-005-2061        |          |
|      |                                       | B - SAE 'B' COVER                  | 25-005-2051   | 25-005-2051        | 25-005-2051        | 25-005-2051      | 25-005-2051          | 25-005-2051        |          |
|      |                                       | C - SAE 'C' (2 AND 4 BOLT)         | 25-004-1222   | 25-004-1222        | 25-004-1222        | 25-004-1222      | 25-004-1222          | 25-004-1222        |          |
|      | D - SAE 'D' COVER                     | 25-004-1232                        | 25-004-1232   | 25-004-1232        | 25-004-1232        | 25-004-1232      | 25-004-1232          |                    |          |
| 5    | 1                                     |                                    |   |                    |                    |                  |                      |                    |          |
| 6    | 1                                     |                                    |   |                    |                    |                  |                      |                    |          |
| 7    | 1                                     |                                    |   |                    |                    |                  |                      |                    |          |
|      |                                       | D1 - OUTPUT SHAFT 20T 6/12 SPLINE  | 25-004-4012L  | 25-004-4012L       | 25-004-4012L       | 25-004-4012L     | 25-004-4012L         | 25-004-4012L       |          |
|      |                                       | D2 - OUTPUT SHAFT 3.75" DIA, KEYED | 25-004-4022L  | 25-004-4022L       | 25-004-4022L       | 25-004-4022L     | 25-004-4022L         | 25-004-4022L       |          |
|      |                                       | S1- SPINDLE SHAFT                  | 25-004-4052L  | 25-004-4052L       | 25-004-4052L       | 25-004-4052L     | 25-004-4052L         | 25-004-4052L       |          |
|      |                                       | C1 - OUTPUT SHAFT - CUSTOM         | -   | -                  | -                  | -                | -                    | -                  |          |
| 8    | 3                                     |                                    |   |                    |                    |                  |                      |                    |          |
| 9    | 1                                     |                                    |   |                    |                    |                  |                      |                    |          |
| 10   | 3                                     |                                    |   |                    |                    |                  |                      |                    |          |
| 11   | 1                                     |                                    |   |                    |                    |                  |                      |                    |          |
|      |                                       | INPUT GEAR INPUT 14T SPL           | 25-004-1202   | 25-004-1202        | 25-004-1172        | 25-004-1172      | 25-004-1162          | 25-004-1162        |          |
|      | INPUT GEAR INPUT 13T SPL              | 25-004-1292                        | 25-004-1292   | 25-004-1282        | 25-004-1282        | 25-004-1272      | 25-004-1272          |                    |          |
| 12   | 3                                     |                                    |   |                    |                    |                  |                      |                    |          |
| 13   | 3                                     |                                    |   |                    |                    |                  |                      |                    |          |
| 14   | 2                                     |                                    |   |                    |                    |                  |                      |                    |          |
| 15   | 3                                     |                                    |   |                    |                    |                  |                      |                    |          |
| 16   | 6                                     |                                    |   |                    |                    |                  |                      |                    |          |
| 17   | 6                                     |                                    |   |                    |                    |                  |                      |                    |          |
| 18   | 1                                     |                                    |   |                    |                    |                  |                      |                    |          |
| 19   | 1                                     |                                    |   |                    |                    |                  |                      |                    |          |
| 20   | 1                                     |                                    |   |                    |                    |                  |                      |                    |          |
| 21   | 1                                     |                                    |   |                    |                    |                  |                      |                    |          |
| 22   | 1                                     |                                    |   |                    |                    |                  |                      |                    |          |
| 23   | 3                                     |                                    |   |                    |                    |                  |                      |                    |          |
| 24   | 3                                     |                                    |   |                    |                    |                  |                      |                    |          |
| 25   | 3                                     |                                    |   |                    |                    |                  |                      |                    |          |
| 26   | ★                                     |                                    |   |                    |                    |                  |                      |                    |          |
| 27   | 1                                     |                                    |   |                    |                    |                  |                      |                    |          |
| 28   | 1                                     |                                    |   |                    |                    |                  |                      |                    |          |
|      |                                       | THRUST WASHER - INPUT GEAR         | 81-004-2883   | 81-004-2883        | 81-004-2883        | 81-004-2883      | 81-004-2883          | 81-004-2883        |          |
|      | THRUST WASHER - F/U/W/ 13T 8/16 INPUT | 01-112-0030                        | 01-112-0030   | 01-112-0030        | 01-112-0030        | 01-112-0030      | 01-112-0030          |                    |          |
| 29   | 20                                    |                                    |   |                    |                    |                  |                      |                    |          |
| 30   | 3                                     |                                    |   |                    |                    |                  |                      |                    |          |
| 31   | 3                                     |                                    |   |                    |                    |                  |                      |                    |          |
| 32   | 20                                    |                                    |   |                    |                    |                  |                      |                    |          |
| 33   | 1                                     |                                    |   |                    |                    |                  |                      |                    |          |
| 34   | 1                                     |                                    |   |                    |                    |                  |                      |                    |          |
| 35   | 1                                     |                                    |   |                    |                    |                  |                      |                    |          |
| 36   | 1                                     |                                    |   |                    |                    |                  |                      |                    |          |



▶ FOR 13T, 8/16 INPUT SPLINE, USE P/N 01-112-0030 THRUST WASHER. (USE ONLY WITH 'D' COVER).

\* QUANTITY OF SHIMS DETERMINED BY BEARING PRELOAD.

OPTIONS SEAL KIT P/N 25-016-2011  
INCLUDES 1 EA. OF ITEMS 35  
AND A QTY 3 OF ITEM 15

E.C.N. 2195  
X252LD2-AC DATE: 03-30-04

