



MODEL B20

DOUBLE PLANETARY

EFFECTIVE
FROM: S/N 16401 07-01-93
TO: (CURRENT)

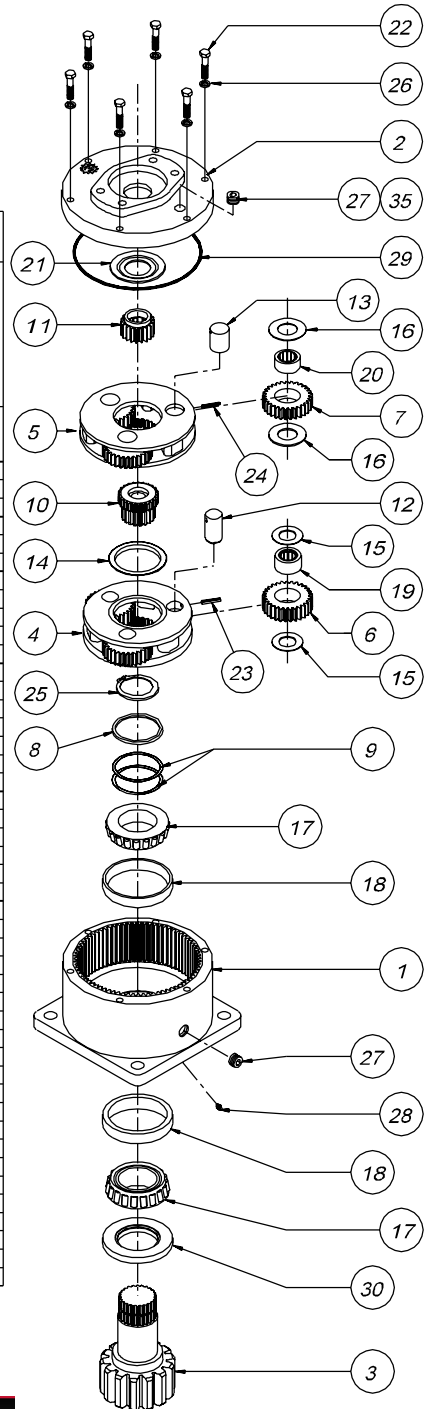
RATIO'S			
16.65:1 4.08 4.08	20.62:1 5.05 4.08	20.62:1 4.08 5.05	25.53:1 5.05 5.05
		▷ INVERTED	

CODE	DESCRIPTION	ITEM	QTY.	PART NUMBER	PART NUMBER	PART NUMBER	PART NUMBER
	B20 CASE-SQUARE-DOUBLE PLT.(NO ZERK)	1	1	20-004-3014			
	B20 CASE-SQUARE-DOUBLE PLT. W/ZERK			20-004-3014Z			
	C20 CASE-CUSTOM PER CUSTOMER SPECS.			-	-	-	-
A	COVER-SAE 'A'			85-004-1513			
B	COVER-SAE 'B' 2-BOLT	2	1	85-004-1503			
C	COVER-SAE 'C' 4-BOLT			28-004-1013			
D1	2"DIA SHAFT-3/8" KEYWAY			20-004-4022			
D2	SHAFT 23T, 16/32 D.P, SPLINE			20-004-4032			
D3	2" DIA.SHAFT-1/2"KEYWAY	3	1	20-004-4042			
D4	2.25"D.SHAFT-1/2"KEYWAY			28-004-4202			
C1	SHAFT-CUSTOM PER CUSTOMER SPECS.			-	-	-	-
	CARRIER-SECONDARY	4	1	20-004-1282	20-004-1282	20-004-1292	20-004-1292
	CARRIER-PRIMARY	5	1	50-004-1082	50-004-1072	50-004-1082	50-004-1072
	PLANET GEAR-SEC.	6	3	20-004-1041	20-004-1041	20-004-1051	20-004-1051
	PLANET GEAR-PRI.	7	3	85-004-1031	85-004-1021	85-004-1031	85-004-1021
	SUPPORT WASHER	8	1	20-004-1031			
	SHIM	9	*	20-004-1091			
	SUN GEAR-SECONDARY	10	1	20-004-1332	20-004-1062	20-004-1072	20-004-1072
1	INPUT GEAR 21T, 20/40 D.P.SPLINE			85-004-1402		85-004-1402	N/A
2	INPUT GEAR 13T, 16/32 D.P.SPLINE			85-004-1102	85-004-1062		85-004-1062
3	INPUT GEAR SAE 1"-6B SPLINE			85-004-1122	85-004-1112		85-004-1112
4	INPUT GEAR 14T, 12/24 D.P.SPLINE			85-004-1533		85-004-1533	N/A
5	INPUT GEAR 15T, 16/32 D.P.SPLINE			85-004-1542	85-004-1422		85-004-1422
6	INPUT GEAR 1"DIA X .25" KEY			85-004-1582		85-004-1582	N/A
	PLANET SHAFT-SECONDARY	12	3	20-004-1081			
	PLANET SHAFT-PRIMARY	13	3	81-004-0071			
	THRUST WASHER-SEC.CUP	14	1	50-004-1011			
	THRUST WASHER-(SEC. PLANET GEAR)	15	6	85-004-1181			
	THRUST WASHER-(PRI. PLANET GEAR)	16	6	81-004-1561			
	BEARING CONE	17	2	01-102-0160			
	BEARING CUP	18	2	01-103-0160			
	BEARING-SEC.PLANET	19	3	01-105-0010			
	BEARING-PRI.PLANET	20	3	01-105-0410			
	THRUST WASHER-INPUT	21	1	50-004-1091			
	HEX CAPSCREW 5/16-18 X 1.5, GR8	22	6	01-150-1400			
	ROLLPIN-SECONDARY 3/16 X 7/8	23	3	01-153-0210			
	ROLLPIN-PRIMARY 1/8 X 1	24	3	01-153-0080			
	RETAINING RING (NO, N5100-206)	25	1	01-160-0250			
	LOCKWASHER 5/16 MED	26	6	01-166-0110			
	PIPE PLUG-MAG. 3/8 NPT-SOC HD	27	2	01-207-0070			
	GREASE FITTING (OPTIONAL)	28	(1)	01-215-0050			
	O-RING 167 MM X 3 MM	29	1	01-402-0560			
	SEAL-SHAFT	30	1	01-405-0550			
	AIR VENT 3/8 NPT (OPTIONAL)	35	(1)	01-215-0070			
	-	-	-	-	-	-	-

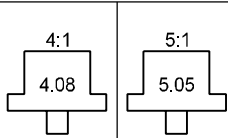
NOTE * BEARING PRELOAD DETERMINES QUANTITY OF SHIMS.

SEAL KIT; P/N 20-016-0501; INCLUDES ITEMS 29 AND 30.

▷ FOR 20:1 RATIO, INPUT CODES 1, 4 AND 6 REQUIRE "INVERTED" RATIO CARRIER ASSEMBLIES.



RATIO'S



MODEL B20

SINGLE PLANETARY

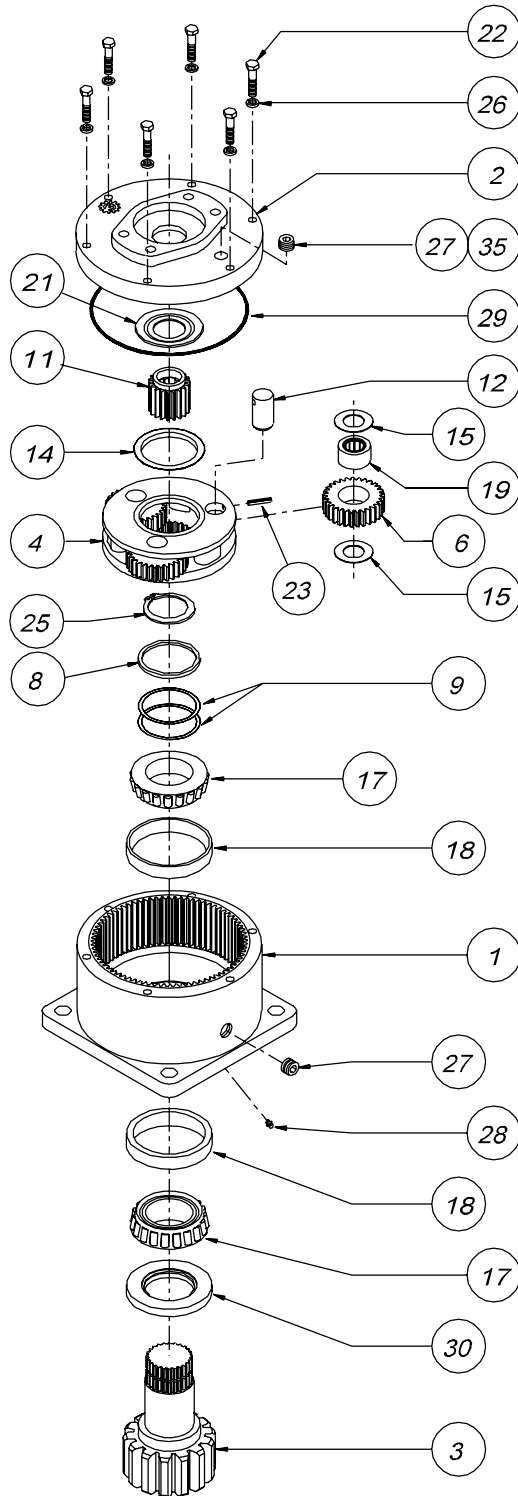


EFFECTIVE
FROM: S/N 16401 07-01-93
TO: (CURRENT)

PART NUMBER	PART NUMBER	QTY.	ITEM	CODE	DESCRIPTION
←	20-004-3024	1	1		B20 CASE-SQUARE- (NO ZERK)
←	20-004-3024Z				B20 CASE-SQUARE- WZERK
-	-				CB20 CASE-CUSTOM PER CUSTOMER SPECS.
←	85-004-1513	1	2	A	COVER-SAE 'A'
←	85-004-1503			B	COVER-SAE 'B' 2-BOLT
←	28-004-1013			C	COVER-SAE 'C' 4-BOLT
←	20-004-4022	1	3	D1	2"DIA SHAFT-3/8" KEYWAY
←	20-004-4032			D2	SHAFT 23T, 12/24 D.P. SPLINE
←	20-004-4042			D3	2" DIA. SHAFT-1/2"KEYWAY
←	28-004-4202			D4	2.25"D.SHAFT-1/2"KEYWAY
-	-			C1	SHAFT-CUSTOM PER CUSTOMER SPECS.
←	20-004-1282	1	4		CARRIER-SECONDARY
←	20-004-1041	3	6		PLANET GEAR-SEC.
←	20-004-1031	1	8		SUPPORT WASHER
←	20-004-1091	*	9		SHIM
←	20-004-1302	1	11	1	INPUT GEAR 21T,20/40 D.P.SPLINE
←	20-004-1122			2	INPUT GEAR 13T,16/32 D.P.SPLINE
←	20-004-1102			3	INPUT GEAR SAE 1"-6B SPLINE
←	20-004-1192			4	INPUT GEAR 14T,12/24 D.P.SPLINE
←	20-004-1322			5	INPUT GEAR 15T,16/32 D.P.SPLINE
←	20-004-1142			6	INPUT GEAR 1"DIA X .25" KEY
←	20-004-1081	3	12		PLANET SHAFT-SECONDARY
←	50-004-1011	1	14		THRUST WASHER-SEC.CUP
←	85-004-1181	6	15		THRUST WASHER - (SEC. PLANET GEAR)
←	01-102-0160	2	17		BEARING CONE
←	01-103-0160	2	18		BEARING CUP
←	01-105-0010	3	19		BEARING-SEC.PLANET
←	50-004-1091	1	21		THRUST WASHER-INPUT
←	01-150-1400	6	22		HEX CAPSCREW 5/16-18 X 1.5, GR8
←	01-153-0210	3	23		ROLLPIN-SECONDARY 3/16 X 7/8
←	01-160-0250	1	25		RETAINING RING (NO.N5100-206)
←	01-166-0110	6	26		LOCKWASHER 5/16 MED
←	01-207-0070	2	27		PIPE PLUG-MAG. 3/8 NPT-SOC HD
←	01-215-0050	(1)	28		GREASE FITTING (OPTIONAL)
←	01-402-0560	1	29		O-RING 167 MM X 3 MM
←	01-405-0550	1	30		SEAL-SHAFT
←	01-216-0070	(1)	35		AIR VENT 3/8 NPT (OPTIONAL)
-	-	-	-	-	-

NOTE * BEARING PRELOAD DETERMINES QUANTITY OF SHIMS.

SEAL KIT; P/N 20-016-0501; INCLUDES ITEMS 29 AND 30.



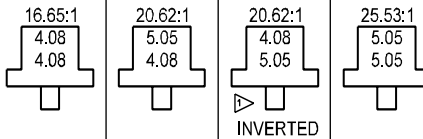
MODEL P20

DOUBLE PLANETARY

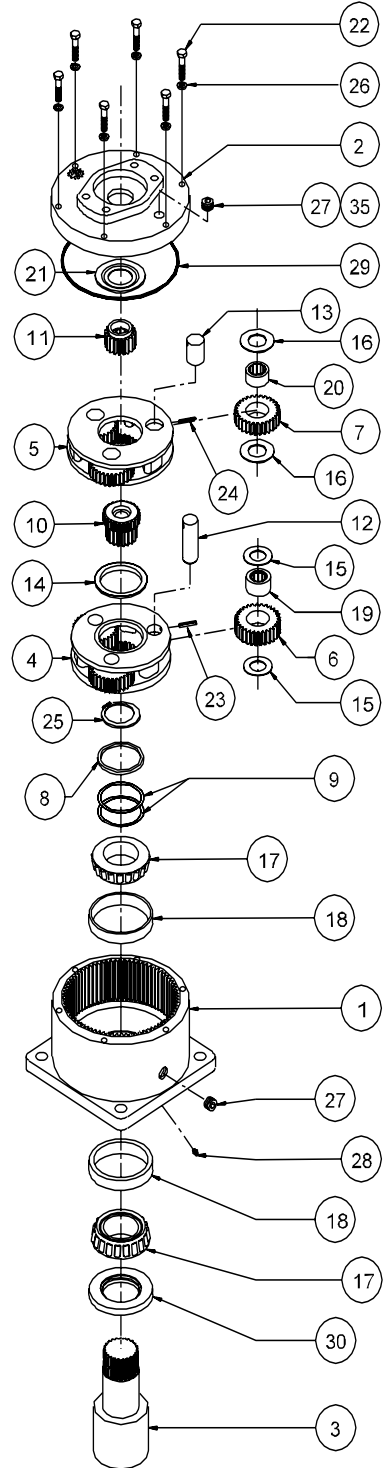


EFFECTIVE
FROM: S/N 16401 07-01-93
TO: (CURRENT)

RATIO'S



CODE	DESCRIPTION	ITEM	QTY.	PART NUMBER	PART NUMBER	PART NUMBER	PART NUMBER
	P20 CASE-SQUARE-DOUBLE PLT.(NO ZERK)	1	1	20-004-3064			
	P20 CASE-SQUARE-DOUBLE PLT. W/ZERK			20-004-3064Z			
	CP20 CASE-CUST.MTG PER CUSTOMER SPECS.			-	-	-	-
A	COVER-SAE 'A'			85-004-1513			
B	COVER-SAE 'B' 2-BOLT	2	1	85-004-1503			
C	COVER-SAE 'C' 4-BOLT			28-004-1013			
F1	SHAFT-1.5" KEYED			20-004-1122			
F2	SHAFT-2" KEYED	3	1	20-004-4112			
C1	SHAFT-CUSTOM PER CUSTOMER SPECS.			-	-	-	-
	CARRIER-SECONDARY	4	1	20-004-1282	20-004-1282	20-004-1292	20-004-1292
	CARRIER-PRIMARY	5	1	50-004-1082	50-004-1072	50-004-1082	50-004-1072
	PLANET GEAR-SEC.	6	3	20-004-1041	20-004-1041	20-004-1051	20-004-1051
	PLANET GEAR-PRI.	7	3	85-004-1031	85-004-1021	85-004-1031	85-004-1021
	SUPPORT WASHER	8	1	20-004-1031			
	SHIM	9	*	20-004-1091			
	SUN GEAR-SECONDARY	10	1	20-004-1332	20-004-1062	20-004-1072	20-004-1072
1	INPUT GEAR 21T,20/40 D.P.SPLINE			85-004-1402		85-004-1402	N/A
2	INPUT GEAR 13T,16/32 D.P.SPLINE			85-004-1102	85-004-1062		85-004-1062
3	INPUT GEAR SAE 1"-6B SPLINE			85-004-1122	85-004-1112		85-004-1112
4	INPUT GEAR 14T,12/24 D.P.SPLINE			85-004-1533		85-004-1533	N/A
5	INPUT GEAR 15T,16/32 D.P.SPLINE			85-004-1542	85-004-1422		85-004-1422
6	INPUT GEAR 1"DIA X .25" KEY			85-004-1582		85-004-1582	N/A
	PLANET SHAFT-SECONDARY	12	3	20-004-1081			
	PLANET SHAFT-PRIMARY	13	3	81-004-0071			
	THRUST WASHER-SEC.CUP	14	1	50-004-1011			
	THRUST WASHER-(SEC. PLANET GEAR)	15	6	85-004-1181			
	THRUST WASHER-(PRI. PLANET GEAR)	16	6	81-004-1561			
	BEARING CONE	17	2	01-102-0160			
	BEARING CUP	18	2	01-103-0160			
	BEARING-SEC.PLANET	19	3	01-105-0010			
	BEARING-PRI.PLANET	20	3	01-105-0410			
	THRUST WASHER-INPUT	21	1	50-004-1091			
	HEX CAPSCREW 5/16-18 X 1.5, GR8	22	6	01-150-1400			
	ROLLPIN-SECONDARY 3/16 X 7/8	23	3	01-153-0210			
	ROLLPIN-PRIMARY 1/8 X 1	24	3	01-153-0080			
	RETAINING RING	25	1	01-160-0250			
	LOCKWASHER 5/16 MED	26	6	01-166-0110			
	PIPE PLUG-MAG. 3/8 NPT-SOC HD	27	2	01-207-0070			
	GREASE FITTING (OPTIONAL)	28	(1)	01-215-0050			
	O-RING 167 MM X 3 MM	29	1	01-402-0560			
	SEAL-SHAFT	30	1	01-405-0610			
	AIR VENT 3/8 NPT (OPTIONAL)	35	(1)	01-216-0070			
		-	-	-	-	-	-



NOTE * BEARING PRELOAD DETERMINES QUANTITY OF SHIMS.
SEAL KIT; P/N 20-016-0511; INCLUDES ITEMS 29 AND 30.

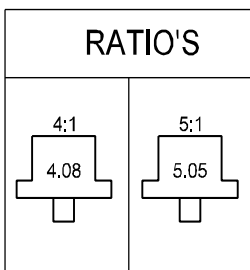
▷ FOR 20:1 RATIO, INPUT CODES 1, 4 AND 6 REQUIRE "INVERTED" RATIO CARRIER ASSEMBLIES.

MODEL P20

SINGLE PLANETARY



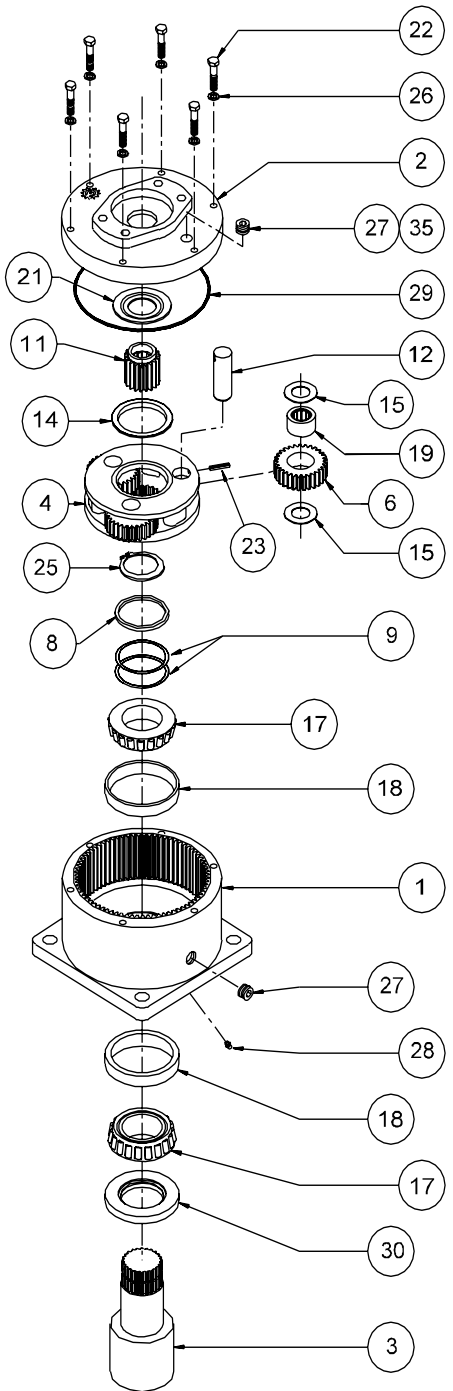
EFFECTIVE
FROM: S/N 16401 07-01-93
TO: (CURRENT)



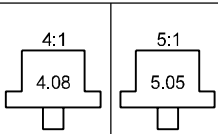
PART NUMBER	PART NUMBER	QTY.	ITEM	C O D E	DESCRIPTION
←	20-004-3074	1	1		P20 CASE-SQUARE-SINGLE PLT.(NO ZERK)
←	20-004-3074Z				P20 CASE-SQUARE-SINGLE PLT. W/ZERK
-	-				CP20 CASE-CUST.MTG PER CUSTOMER SPECS.
←	85-004-1513	1	2	A	COVER-SAE 'A'
←	85-004-1503			B	COVER-SAE 'B' 2-BOLT
←	28-004-1013			C	COVER-SAE 'C' 4-BOLT
←	20-004-4122	1	3	F1	SHAFT-1.5" KEYED
←	20-004-4112			F2	SHAFT-2" KEYED
-	-			C1	SHAFT-CUSTOM PER CUSTOMER SPECS.
20-004-1282	20-004-1292	1	4		CARRIER-SECONDARY
20-004-1041	20-004-1051	3	6		PLANET GEAR-SEC.
←	20-004-1031	1	8		SUPPORT WASHER
←	20-004-1091	*	9		SHIM
20-004-1302	N/A	1	11	1	INPUT GEAR 21T,20/40 D.P.SPLINE
20-004-1122	20-004-1132			2	INPUT GEAR 13T,16/32 D.P.SPLINE
20-004-1102	20-004-1112			3	INPUT GEAR SAE 1"-6B SPLINE
20-004-1192	N/A			4	INPUT GEAR 14T,12/24 D.P.SPLINE
20-004-1322	20-004-1312			5	INPUT GEAR 15T,16/32 D.P.SPLINE
20-004-1142	N/A			6	INPUT GEAR 1"DIA X .25" KEY
←	20-004-1081	3	12		PLANET SHAFT-SECONDARY
←	50-004-1011	1	14		THRUST WASHER-SEC.CUP
←	85-004-1181	6	15		THRUST WASHER- (SEC. PLANET GEAR)
←	01-102-0160	2	17		BEARING CONE
←	01-103-0160	2	18		BEARING CUP
←	01-105-0010	3	19		BEARING-SEC.PLANET
←	50-004-1091	1	21		THRUST WASHER-INPUT
←	01-150-1400	6	22		HEX CAPSCREW 5/16-18 X 1.5, GR8
←	01-153-0210	3	23		ROLLPIN-SECONDARY 3/16 X 7/8
←	01-160-0250	1	25		RETAINING RING
←	01-166-0110	6	26		LOCKWASHER 5/16 MED
←	01-207-0070	2	27		PIPE PLUG-MAG. 3/8 NPT-SOC HD
←-----	01-215-0050	(1)	28		GREASE FITTING (OPTIONAL)
←	01-402-0560	1	29		O-RING 167 MM X 3 MM
←	01-405-0610	1	30		SEAL-SHAFT
←-----	01-216-0070	(1)	35		AIR VENT 3/8 NPT (OPTIONAL)
-	-	-	-		-

NOTE * BEARING PRELOAD DETERMINES QUANTITY OF SHIMS.

SEAL KIT; P/N 20-016-0511; INCLUDES ITEMS 29 AND 30.



RATIO'S



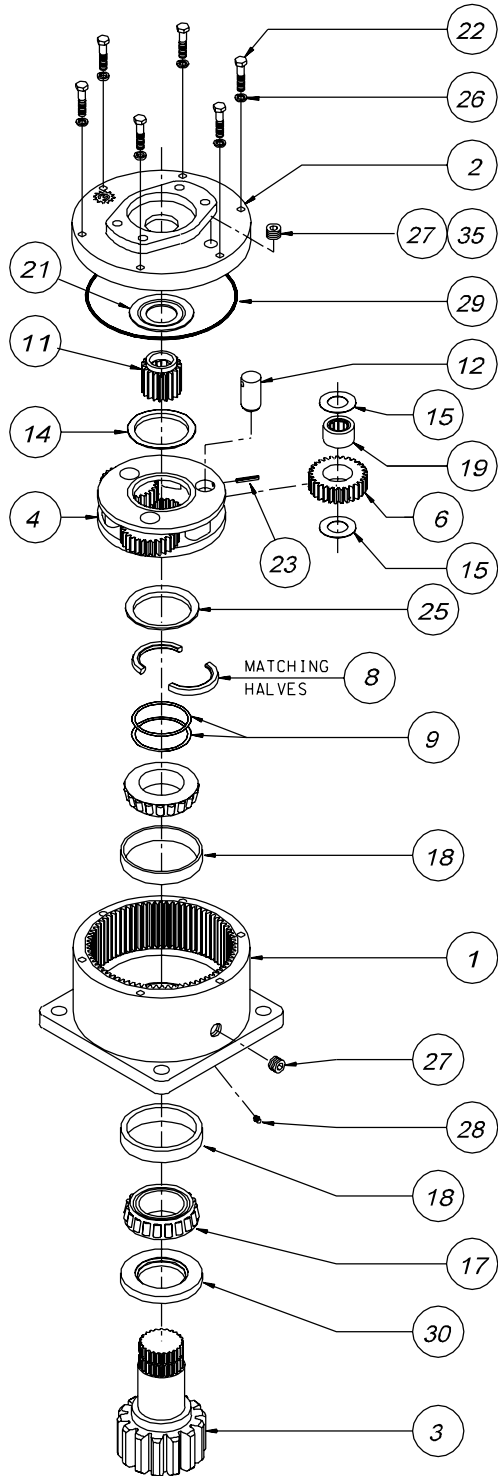
MODEL B20L

SINGLE PLANETARY



EFFECTIVE
FROM: S/N 16401 07-01-93
TO: (CURRENT)

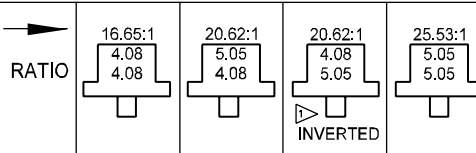
PART NUMBER	PART NUMBER	QTY.	ITEM	C O D E	DESCRIPTION
←	20-004-3024	1	1		B20 CASE-SQUARE- (NO ZERK)
←	20-004-3024Z				B20 CASE-SQUARE- WZERK
-	-				CB20 CASE-CUSTOM PER CUSTOMER SPECS.
←	85-004-1513	1	2	A	COVER-SAE 'A'
←	85-004-1503			B	COVER-SAE 'B' 2-BOLT
←	28-004-1013			C	COVER-SAE 'C' 4-BOLT
←	20-004-4022L	1	3	D1	2" DIA SHAFT-3/8" KEYWAY
←	20-004-4032L			D2	SHAFT 23T, 16/32 D.P. SPLINE
←	20-004-4042L			D3	2" DIA. SHAFT-1/2" KEYWAY
←	28-004-4202L			D4	2.25"D. SHAFT-1/2" KEYWAY
-	-			C1	SHAFT-CUSTOM PER CUSTOMER SPECS.
←	20-004-1282	1	4		CARRIER-SECONDARY
←	20-004-1041	3	6		PLANET GEAR-SEC.
←	20-004-1362	1	8		SPLIT RING (MATCHING HALVES)
←	20-004-1091	*	9		SHIM
←	20-004-1302	N/A	1	1	INPUT GEAR 21T, 20/40 D.P. SPLINE
←	20-004-1122	20-004-1132		2	INPUT GEAR 13T, 16/32 D.P. SPLINE
←	20-004-1102	20-004-1112		3	INPUT GEAR SAE 1"-6B SPLINE
←	20-004-1192	N/A		4	INPUT GEAR 14T, 12/24 D.P. SPLINE
←	20-004-1322	20-004-1312		5	INPUT GEAR 15T, 16/32 D.P. SPLINE
←	20-004-1142	N/A		6	INPUT GEAR 1" DIA X .25" KEY
←	20-004-1081	3	12		PLANET SHAFT-SECONDARY
←	50-004-1011	1	14		THRUST WASHER-SEC. CUP
←	85-004-1181	6	15		THRUST WASHER - (SEC. PLANET GEAR)
←	01-102-0160	2	17		BEARING CONE
←	01-103-0160	2	18		BEARING CUP
←	01-105-0010	3	19		BEARING-SEC. PLANET
←	50-004-1091	1	21		THRUST WASHER-INPUT
←	01-150-1400	6	22		HEX CAPSCREW 5/16-18 X 1.5, GR8
←	01-153-0210	3	23		ROLLPIN-SECONDARY 3/16 X 7/8
←	20-004-1372	1	25		LOCK RING
←	01-166-0110	6	26		LOCKWASHER 5/16 MED
←	01-207-0070	2	27		PIPE PLUG-MAG. 3/8 NPT-SOC HD
←	01-215-0050	(1)	28		GREASE FITTING (OPTIONAL)
←	01-402-0560	1	29		O-RING 167 MM X 3 MM
←	01-405-0550	1	30		SEAL-SHAFT
←	01-216-0070	(1)	35		AIR VENT 3/8 NPT (OPTIONAL)
-	-	-	-		-



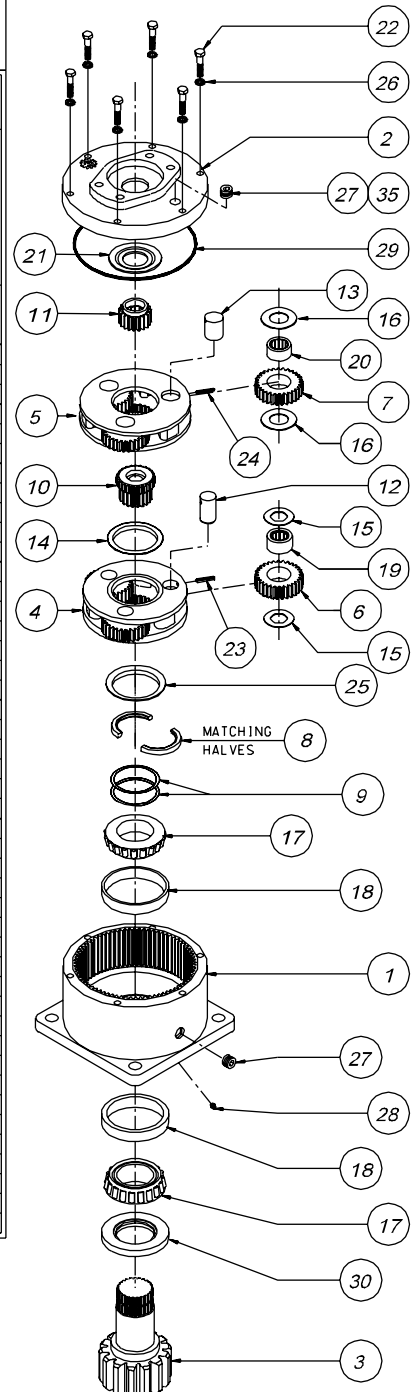
NOTE * BEARING PRELOAD DETERMINES QUANTITY OF SHIMS.
SEAL KIT; P/N 20-016-0501; INCLUDES ITEMS 29 AND 30.

EFFECTIVE
FROM: S/N 16401 07-01-93
TO: (CURRENT)

DOUBLE PLANETARY



ITEM	QTY.	PART NUMBER	PART NUMBER	PART NUMBER	PART NUMBER
1	1	20-004-3014			
		20-004-3014Z			
		-	-	-	-
2	1	85-004-1513			
		85-004-1503			
		28-004-1013			
3	1	20-004-4022L			
		20-004-4032L			
		20-004-4042L			
		28-004-4202L			
		-	-	-	-
4	1	20-004-1282	20-004-1282	20-004-1292	20-004-1292
5	1	50-004-1082	50-004-1072	50-004-1082	50-004-1072
6	3	20-004-1041	20-004-1041	20-004-1051	20-004-1051
7	3	85-004-1031	85-004-1021	85-004-1031	85-004-1021
8	1	20-004-1362			
9	*	20-004-1091			
10	1	20-004-1332	20-004-1062	20-004-1072	20-004-1072
		85-004-1402		85-004-1402	N/A
		85-004-1102	85-004-1062		85-004-1062
		85-004-1122	85-004-1112		85-004-1112
		85-004-1533		85-004-1533	N/A
		85-004-1542	85-004-1422		85-004-1422
		85-004-1562		85-004-1562	N/A
12	3	20-004-1081			
13	3	81-004-0071			
14	1	50-004-1011			
15	6	85-004-1181			
16	6	81-004-1561			
17	2	01-102-0160			
18	2	01-103-0160			
19	3	01-105-0010			
20	3	01-105-0410			
21	1	50-004-1091			
22	6	01-150-1400			
23	3	01-153-0210			
24	3	01-153-0080			
25	1	20-004-1372			
26	6	01-166-0110			
27	2	01-207-0070			
28	(1)	01-215-0050			
29	1	01-402-0560			
30	1	01-405-0550			
35	(1)	01-216-0070			
		-	-	-	-



▶ INVERTED RATIO SUNGEAR IS NOT COUNTERBORED FOR CODE 4 INPUT. MOTOR COMPATIBILITY MUST BE VERIFIED.

NOTES:

* BEARING PRELOAD DETERMINES QUANTITY OF SHIMS.

SEAL KIT (P/N 20-016-0501) INCLUDES (1 EA.) O-RINGS AND (1 EA.) SEAL.
AND (1 EA.) SEAL.



MODEL 120 SINGLE PLANETARY

EFFECTIVE FROM:

S/N 17802

DATE 02/15/94

ITEM	DESCRIPTION	QTY	RATIO 4.42:1	RATIO 6.00:1
1	BASE	1	-A-	-A-
2	CARRIER (SEC)	1	81-004-1823	81-004-1833
4	COVER	1	-D-	-D-
5	RING GEAR	1	81-004-2362	81-004-2362
6	PLANET SHAFT (SEC)	3	81-004-0061	81-004-0061
8	PLANET GEAR (SEC)	3	81-004-0722	81-004-0722
11	INPUT GEAR	1	-H-	-H-
12	OUTPUT SHAFT	1	-I-	-I-
13	THRUSTWASHER-PLANET	6	81-004-1561	81-004-1561
14	THRUSTWASHER-SEC	1	81-004-2711	81-004-2711
15	BEARING CONE	1	01-102-0030	01-102-0030
16	BEARING CONE	1	01-102-0020	01-102-0020
17	BEARING CUP	1	01-103-0030	01-103-0030
18	BEARING CUP	1	01-103-0020	01-103-0020
19	LOCKNUT	1	01-104-0040	01-104-0040
20	LOCKWASHER	1	01-104-0030	01-104-0030
21	BEARING-SEC, PLANET	6	01-105-0420	01-105-0420
24	INPUT THRUST WASHER	1	81-004-2701	81-004-2701
25	HEX HD CAPSCREW	8	01-150-1020	01-150-1020
26	FLANGE 12-PT SCREW	16	01-150-1460	01-150-1460
27	ROLL PIN- SEC. PLANET	3	01-153-0020	01-153-0020
29	LOCKWASHER	8	01-166-0010	01-166-0010
30	FLAT WASHER-HARDENED	16	01-166-0120	01-166-0120
31	MAGNETIC PIPE PLUG	2	01-207-0041	01-207-0041
32	MAGNETIC PIPE PLUG	1	01-207-0070	01-207-0070
33	GREASE FITTING	1	01-215-0040	01-215-0040
34	O-RING	2	01-402-0420	01-402-0420
35	SHAFT SEAL- OUTER	1	01-405-0270	01-405-0270
36	SHAFT SEAL- INNER	1	01-405-0280	01-405-0280
37	RETAINING RING	1	01-160-0350	01-160-0350
38	THRUST WASHER SGL PL	1	81-004-2883	81-004-2883

NOTE	CODE	BASE	PART NUMBER
-A-	A120	ROUND FLANGE	81-004-0342
	B120	SQUARE FLANGE	81-004-0592
	F120	FLANGELESS	81-004-1142
	C120	CUSTOM	

NOTE	CODE	COVER	EXCEPT WITH CODE 4 INPUT	WITH CODE 4 INPUT ONLY
-D-	A	SAE 'A' MOD. 4 BOLT	81-004-2803	81-004-2813
	B	SAE 'B' 2 BOLT	81-004-2723	81-004-2823
	C	SAE 'C' 2 BOLT AND 4 BOLT	81-004-2833	81-004-2833

NOTE	CODE	INPUT GEAR DESCRIPTION	PART NUMBER	
			4.42:1 RATIO	6.00:1 RATIO
-H-	1	21 T 20/40 DP	N/A	81-004-2242
	2	13 T 16/32 DP	N/A	N/A
	3	SAE 1"-8B	81-004-1592	81-004-1572
	4	14T 12/24 DP	81-004-1582	81-004-1902
	5	15 T 16/32 DP	N/A	N/A

NOTE	CODE	OUTPUT SHAFT	PART NUMBER
-I-	D1	23 T 8/16 DP SPL 2.25" LG	81-004-1392
	D2	3,000" DIA, 5/8" SQ KEY	81-004-0992
	D3	23 T 8/16 DP SPL 1.22" LG	81-004-1412
	D4	23 T 8/16 DP SPL 2.72" LG	81-004-0942
	D5	3,500" DIA, 7/8" SQ KEY	81-004-1152
	C1	CUSTOM	

OPTIONS:

SEAL KIT P/N 81-016-0311
 (INCLUDES 2 OF ITEM 34 AND
 1 EACH OF ITEMS 35 AND 36)

