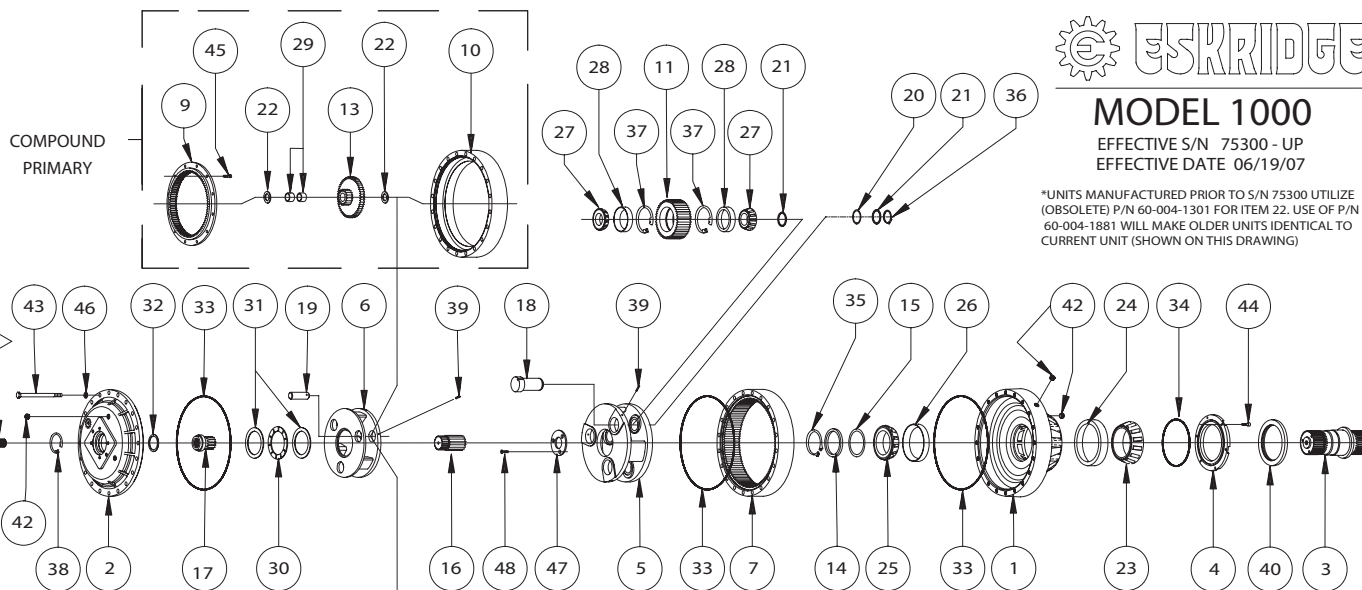




MODEL 1000

EFFECTIVE S/N 75300 - UP
EFFECTIVE DATE 06/19/07

*UNITS MANUFACTURED PRIOR TO S/N 75300 UTILIZE
(OBSOLETE) P/N 60-004-1301 FOR ITEM 22. USE OF P/N
60-004-1881 WILL MAKE OLDER UNITS IDENTICAL TO
CURRENT UNIT (SHOWN ON THIS DRAWING)



NOTES: -J- BEARING PRELOAD DETERMINES QUANTITY OF SHIMS.

SEAL KIT (P/N 60-016-2071) INCLUDES (1 EA. ITEM 34 AND 3 EA. ITEM 33) O-RINGS AND (1 EA. ITEM 40) SEAL.

NOTE	OPTIONS	PART NUMBER
-A-	BASE - F1000 FLANGELESS	60-004-3014
	BASE - A1000 ROUND	60-004-3024
	BASE - C1000 CUSTOM	CUST.MOUNTING PER CUSTOMER SPECS.
-B-	COVER-SAE 'C' (2 AND 4 BOLT)	60-004-1064
	COVER-SAE 'D' (4 BOLT)	60-004-1074
-C-	SHAFT-D1- 40T 8/16 SPLINE	60-004-4012
	SHAFT-D2- 5 1/8 DIA X 1 1/2 KEYWAY	60-004-4022
	SHAFT-C1 CUSTOM	CUSTOM SHAFT PER CUSTOMER SPECS.

P/N: 98-005-1141 WILL ADAPT INPUT TO A 14T 12/24 SPLINE.

SIMPLE PLANETARY				MODEL 1000	COMPOUND PLANETARY			
26.48:1 RATIO	41.41:1 RATIO					75.60:1 RATIO	96.00:1 RATIO	
PART NUMBER	PART NUMBER	QTY.	ITEM	DESCRIPTION	ITEM	QTY.	PART NUMBER	PART NUMBER
-A-	-A-	1	1	BASE	1	1	-A-	-A-
-B-	-B-	1	2	COVER	2	1	-B-	-B-
-C-	-C-	1	3	OUTPUT SHAFT	3	1	-C-	-C-
	60-004-1333	1	4	SEAL CARRIER	4	1	60-004-1333	
	60-004-1044	1	5	CARRIER-SECONDARY	5	1	60-004-1044	
60-004-1014	60-004-1024	1	6	CARRIER-PRIMARY	6	1	60-004-1024	
	60-004-1243	1	7	RING GEAR - SECONDARY	7	1	60-004-1243	
	60-004-1193	1	8	RING GEAR - SIMPLE PRIMARY	8	-	-	
-	-	9	9	RING GEAR - COMPOUND PRIMARY	9	1	60-004-1213	
-	-	10	10	RING SPACER - PRIMARY	10	1	60-004-1253	
	60-004-1232	3	11	PLANET GEAR-SECONDARY	11	3	60-004-1232	
60-004-1132	60-004-1152	3	12	PLANET GEAR-PRIMARY	12	-	-	
-	-	13	13	CLUSTER GEAR	13	3	60-004-1162	60-004-1182
	60-004-1281	1	14	SUPPORT RING - SHAFT BEARING	14	1	60-004-1281	
	60-004-1311	-J-	15	SHIM(S) - SHAFT	15	-J-	60-004-1311	
	60-004-1222	1	16	SUN GEAR	16	1	60-004-1222	
60-004-1122	60-004-1142		17	INPUT GEAR (13T 8/16 SPLINE)	17	1	60-004-1142	60-004-1172
60-004-1402	60-004-1492			INPUT GEAR (16T 8/16 SPLINE)			60-004-1492	60-004-1452
	60-004-1262	3	18	PLANET SHAFT-SECONDARY	18	3	60-004-1262	
	60-004-1272	3	19	PLANET SHAFT-PRIMARY	19	3	60-004-1272	
	60-004-1321	-J-	20	SHIM(S) - SECONDARY PLANET	20	-J-	60-004-1321	
	60-004-1291	6	21	WASHER - SECONDARY PLANET	21	6	60-004-1291	
	60-004-1881	6	22	WASHER - PRIMARY PLANET	22	6	60-004-1881	
	01-102-0190	1	23	BEARING CONE - SHAFT OUTER	23	1	01-102-0190	
	01-103-0190	1	24	BEARING CUP - SHAFT OUTER	24	1	01-103-0190	
	01-102-0220	1	25	BEARING CONE - SHAFT INNER	25	1	01-102-0220	
	01-103-0220	1	26	BEARING CUP - SHAFT INNER	26	1	01-103-0220	
	01-102-0210	6	27	CONE - SEC.PLANET	27	6	01-102-0210	
	01-103-0210	6	28	CUP - SEC.PLANET	28	6	01-103-0210	
	01-105-0510	6	29	BRG-PRIMARY PLANET	29	6	01-105-0510	
	01-112-0340	1	30	BRG-PRI. CARR. THRUST	30	1	01-112-0340	
	01-112-0350	2	31	RACE-PRI. CARR. THRUST	31	2	01-112-0350	
	01-112-0060	1	32	RACE-INPUT THRUST	32	1	01-112-0060	
	01-402-0660	3	33	O-RING - RING GEAR	33	3	01-402-0660	
	01-402-0670	1	34	O-RING - SEAL CARRIER	34	1	01-402-0670	
	01-160-0480	1	35	RETAINING RING - SHAFT	35	1	01-160-0480	
	01-160-0490	3	36	RETAINING RING - SEC. PIN	36	3	01-160-0490	
	01-160-0500	6	37	RETAINING RING-SEC. PLANET	37	6	01-160-0500	
	01-160-0510	1	38	RETAINING RING - INPUT	38	1	01-160-0510	
	01-153-0150	6	39	ROLL PIN - 1/4 X 1 3/8	39	6	01-153-0150	
	01-405-0630	1	40	SEAL-SHAFT	40	1	01-405-0630	
	01-207-0100	6	42	PIPE PLUG 3/4 NPT MAGNETIC	42	6	01-207-0100	
	01-150-1580	20	43	H.H.C.S 3/4-10 X 10.5 GRD 8	43	20	01-150-1580	
	01-150-1110	6	44	S.H.C.S 3/8-16 X 1 GRD 8	44	6	01-150-1110	
	-	-	45	S.H.C.S 1/2-13 X 1.5 GRD 8	45	12	01-150-0570	
	01-166-0350	20	46	HARDWASHER - 3/4	46	20	01-166-0350	
	60-004-1352	1	47	RING-SEC. CARR. RETAINER	47	1	60-004-1352	
	01-150-1590	3	48	FLAT HD SOC C.S. 3/8-24 X 1 GR8	48	3	01-150-1590	