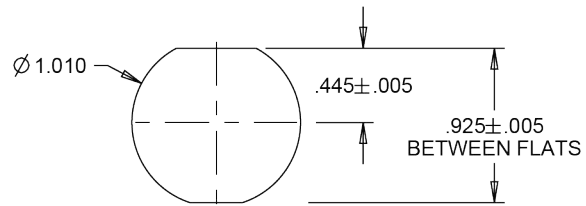
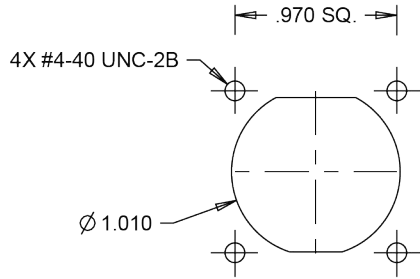
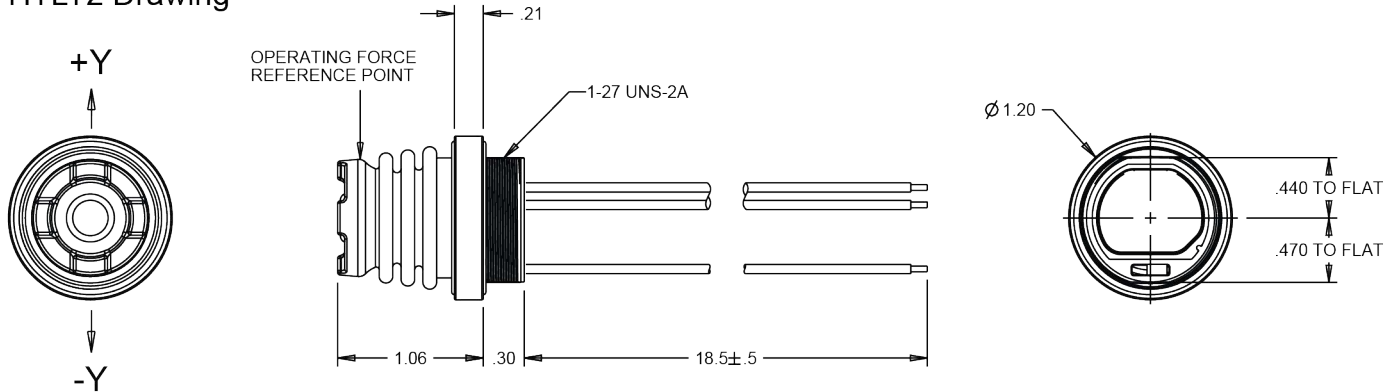


HTLT2 Drawing



SUGGESTED PANEL OPENING
WHEN USING FLANGE AND SCREWS.

SUGGESTED PANEL OPENING
WHEN USING 1-27 NUT.

MAX. PANEL THICKNESS OF 0.125
FOR BOTTOM MOUNT

MAX. PANEL THICKNESS OF 0.125

MIN. PANEL THICKNESS OF .100
FOR TOP MOUNT