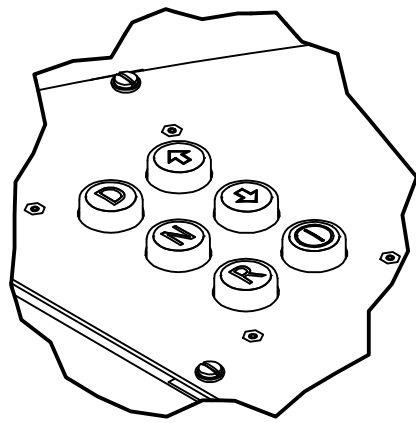
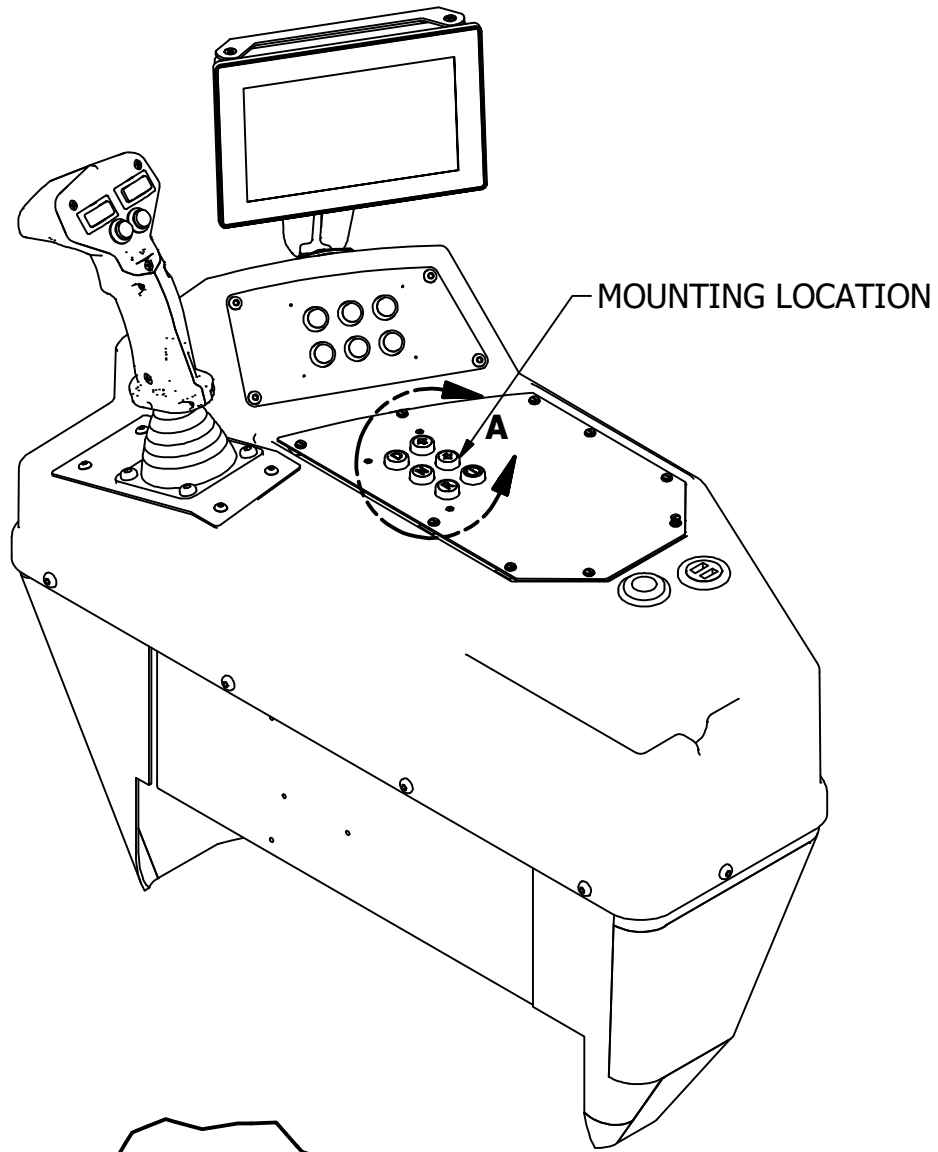
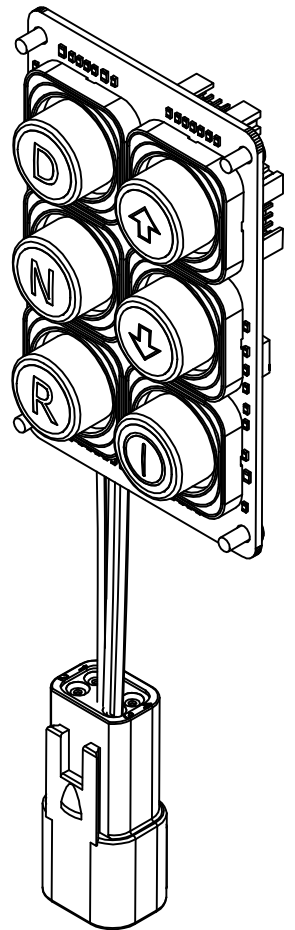
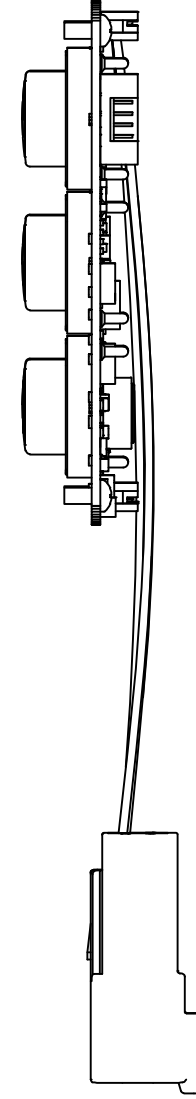
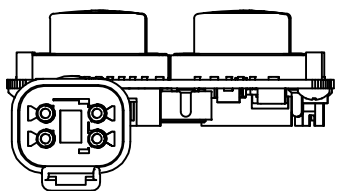
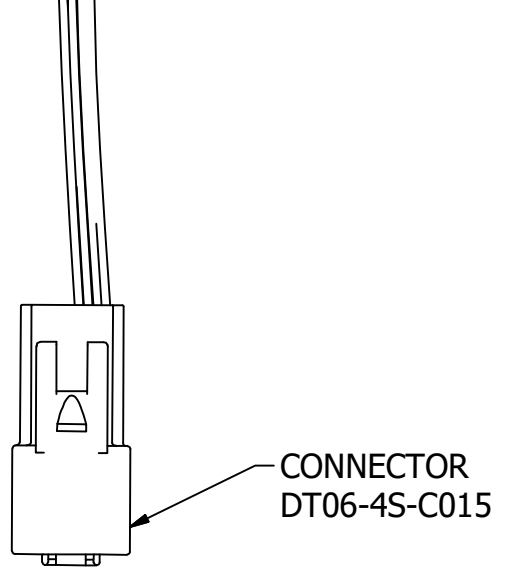
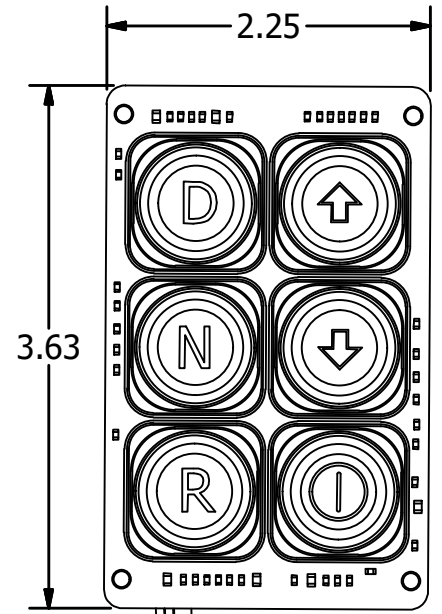


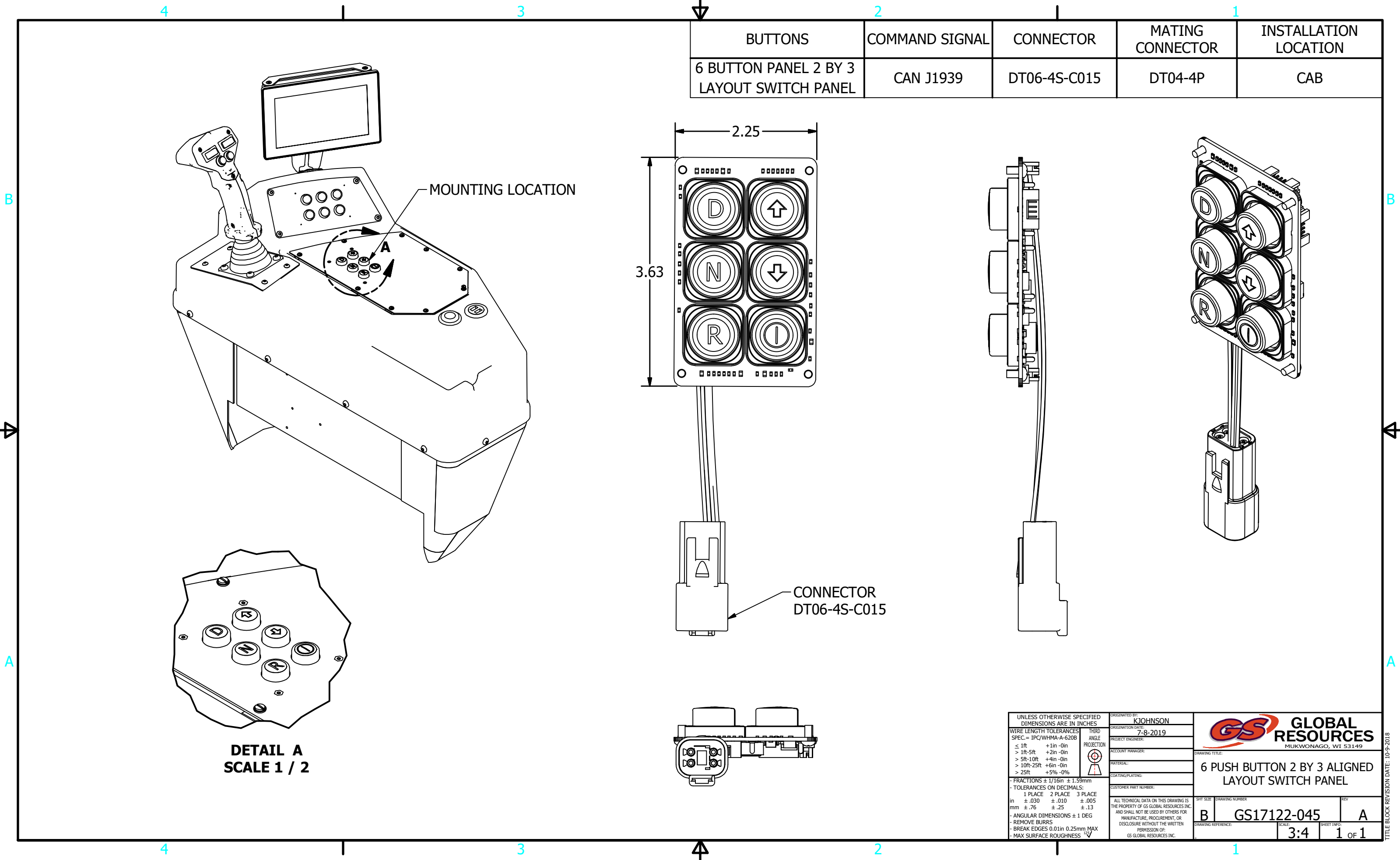
1	2	3	4
INSTALLATION LOCATION	CONNECTOR	COMMAND SIGNAL	BUTTONS
CAB	DT06-4S-C015	CAN J1939	6 BUTTON PANEL 2 BY 3 LAYOUT SWITCH PANEL



DETAIL A
SCALE 1 / 2



UNLESS OTHERWISE SPECIFIED DIMENSIONS ARE IN INCHES		ORIGINATED BY: KJOHNSON		GLOBAL RESOURCES MUKWONAGO, WI 53149
WIRE LENGTH TOLERANCES SPEC = IPC/WHMA-A-620B		ORIGINATION DATE: 7-8-2019		
≤ 1ft	+1in -0in	PROJECT ENGINEER:	MATERIAL:	SCALE: 3:4
> 1ft-5ft	+2in -0in	ACCOUNT MANAGER:	COATING/PLATING:	SHEET INFO: 1 OF 1
> 5ft-10ft	+4in -0in	CUSTOMER PART NUMBER:	ALL TECHNICAL DATA ON THIS DRAWING IS THE PROPERTY OF GS GLOBAL RESOURCES INC. AND SHALL NOT BE USED BY OTHERS FOR MANUFACTURE, PROCUREMENT, OR DISCLOSURE WITHOUT THE WRITTEN PERMISSION OF GS GLOBAL RESOURCES INC.	DRAWING REFERENCE: B
> 10ft-25ft	+6in -0in			DRAWING NUMBER: GS17122-045
> 25ft	+5% -0%			REV: A
FRACTIONS ± 1/16in ± 1.59mm				
TOLERANCES ON DECIMALS:				
1 PLACE	2 PLACE	3 PLACE		
in ± .030	± .010	± .005		
mm ± .76	± .25	± .13		
ANGULAR DIMENSIONS ± 1 DEG				
REMOVE BURRS				
BREAK EDGES 0.01in 0.25mm MAX				
MAX SURFACE ROUGHNESS 12.5				



TITLE BLOCK REVISION DATE: 10-9-2018