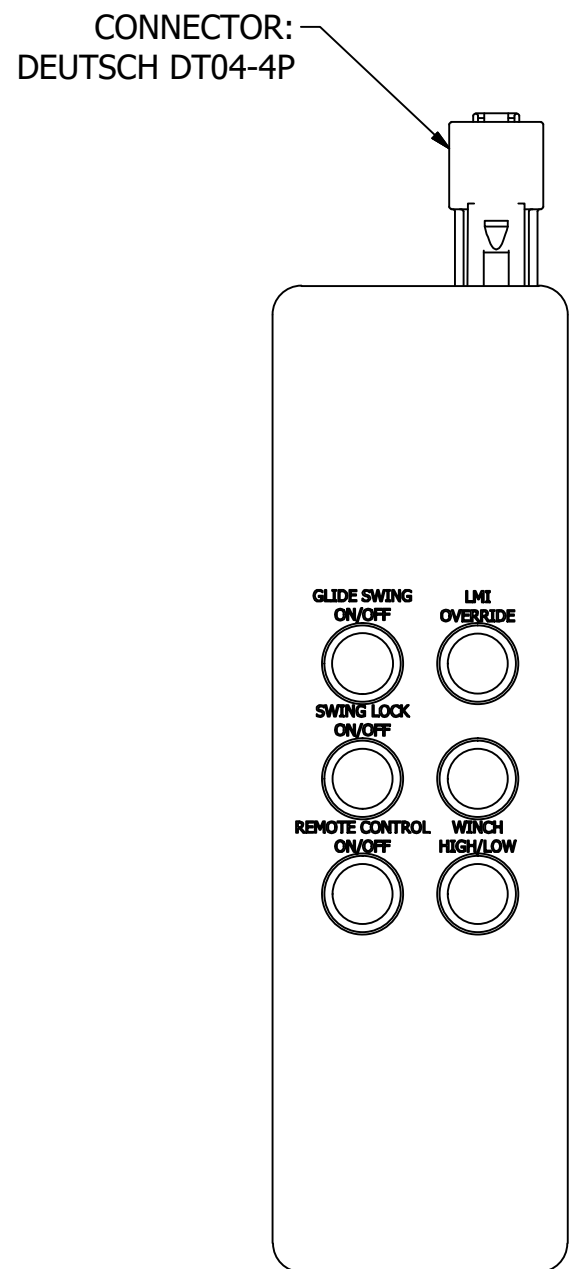
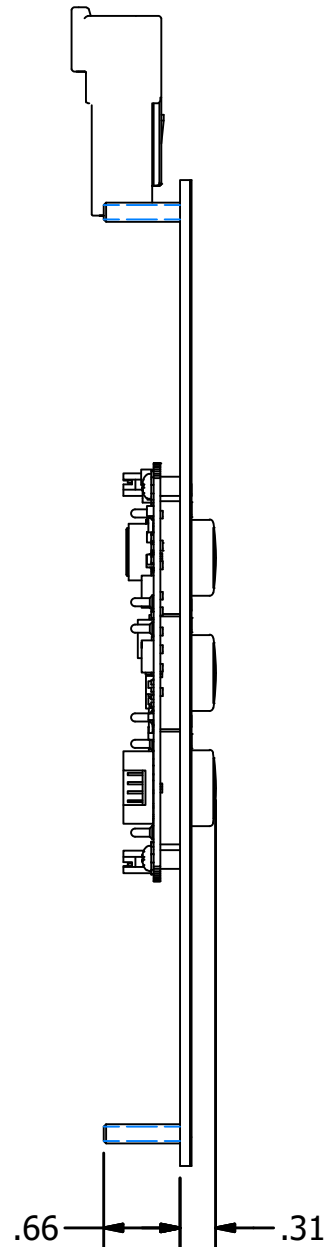
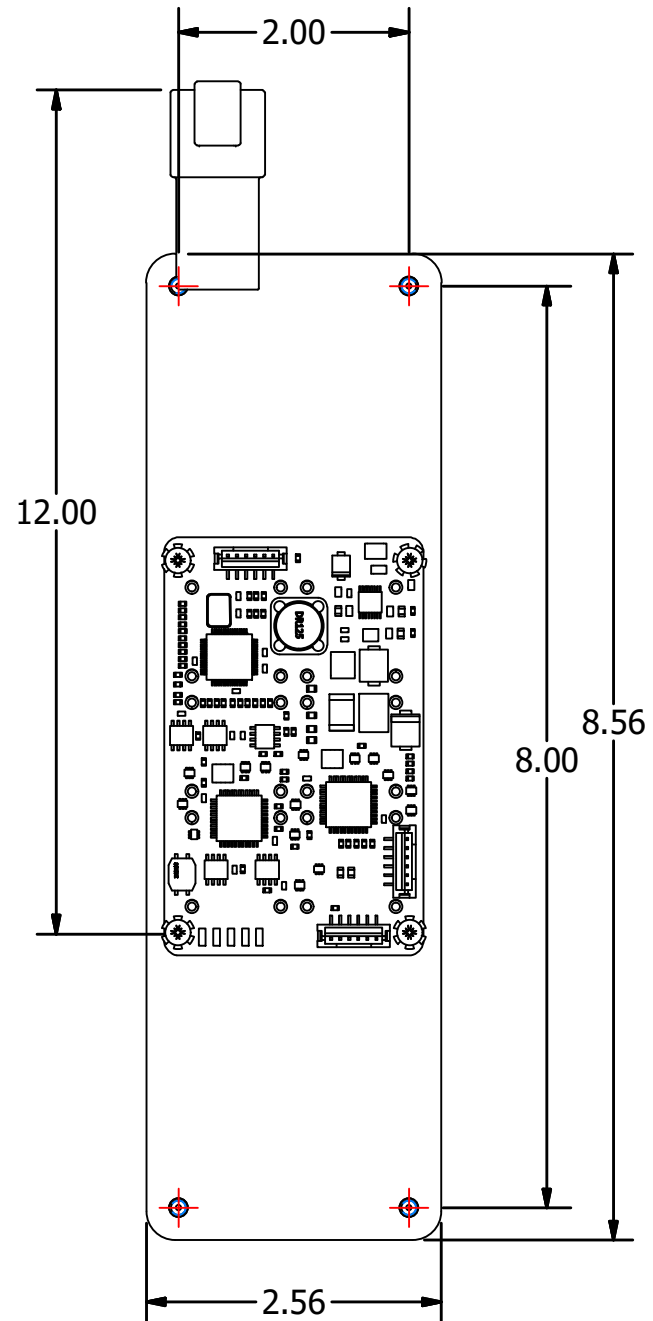


4	3	2	1	1
BUTTONS	COMMAND SIGNAL	CONNECTOR	MATING CONNECTOR	INSTALLATION LOCATION
6 BUTTON 2 BY 3 BUTTTON LAYOUT SWITCH PANEL	CAN J1939	DT04-4P	DT04-4S	CAB



SCALE 1:2

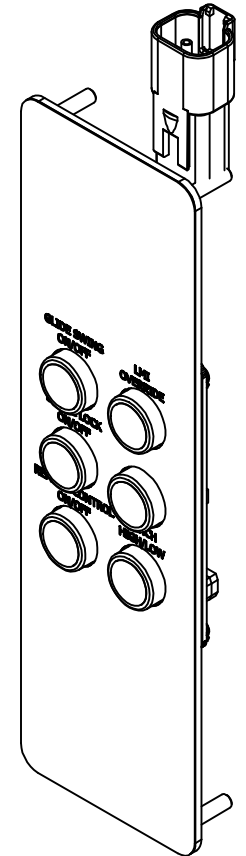
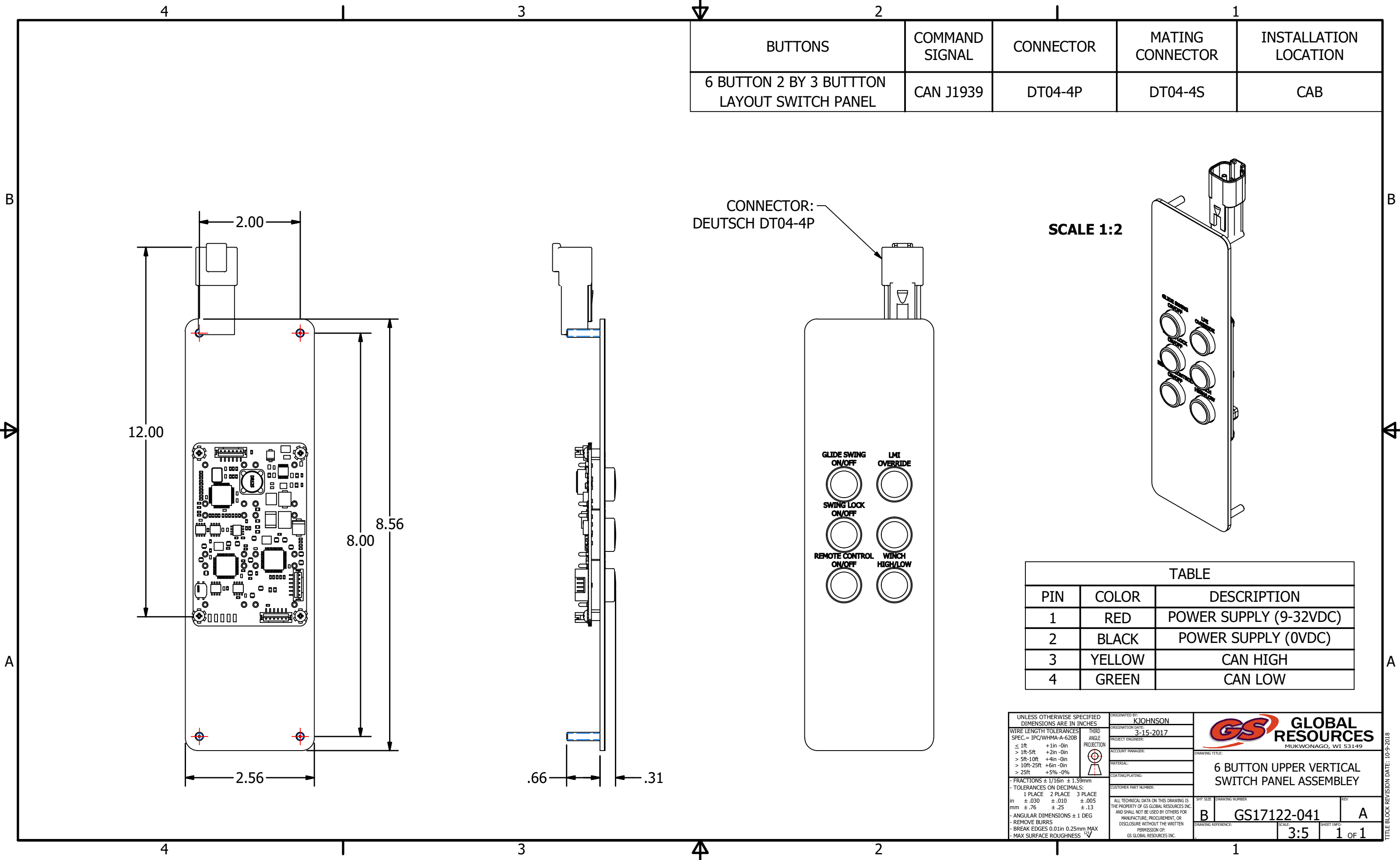


TABLE		
PIN	COLOR	DESCRIPTION
1	RED	POWER SUPPLY (9-32VDC)
2	BLACK	POWER SUPPLY (0VDC)
3	YELLOW	CAN HIGH
4	GREEN	CAN LOW

UNLESS OTHERWISE SPECIFIED DIMENSIONS ARE IN INCHES WIRE LENGTH TOLERANCES SPEC= IPC/WHMA-A-620B ≤ 1ft +1in -0in > 1ft-5ft +2in -0in > 5ft-10ft +4in -0in > 10ft-25ft +6in -0in > 25ft +5% -0% FRACTIONS ± 1/16in ± 1.59mm TOLERANCES ON DECIMALS: 1 PLACE 2 PLACE 3 PLACE in ± .030 ± .010 ± .005 mm ± .76 ± .25 ± .13 ANGULAR DIMENSIONS ± 1 DEG REMOVE BURRS BREAK EDGES 0.01in 0.25mm MAX MAX SURFACE ROUGHNESS 12.5	ORIGINATED BY: KJOHNSON ORIGINATION DATE: 3-15-2017 PROJECT ENGINEER: ACCOUNT MANAGER: MATERIAL: COATING/PLATING: CUSTOMER PART NUMBER:	<p>GLOBAL RESOURCES MUKWONAGO, WI 53149</p>
	ALL TECHNICAL DATA ON THIS DRAWING IS THE PROPERTY OF GS GLOBAL RESOURCES INC. AND SHALL NOT BE USED BY OTHERS FOR MANUFACTURE, PROCUREMENT, OR DISCLOSURE WITHOUT THE WRITTEN PERMISSION OF GS GLOBAL RESOURCES INC.	



TITLE BLOCK REVISION DATE: 10-9-2018