

Performance Ratings

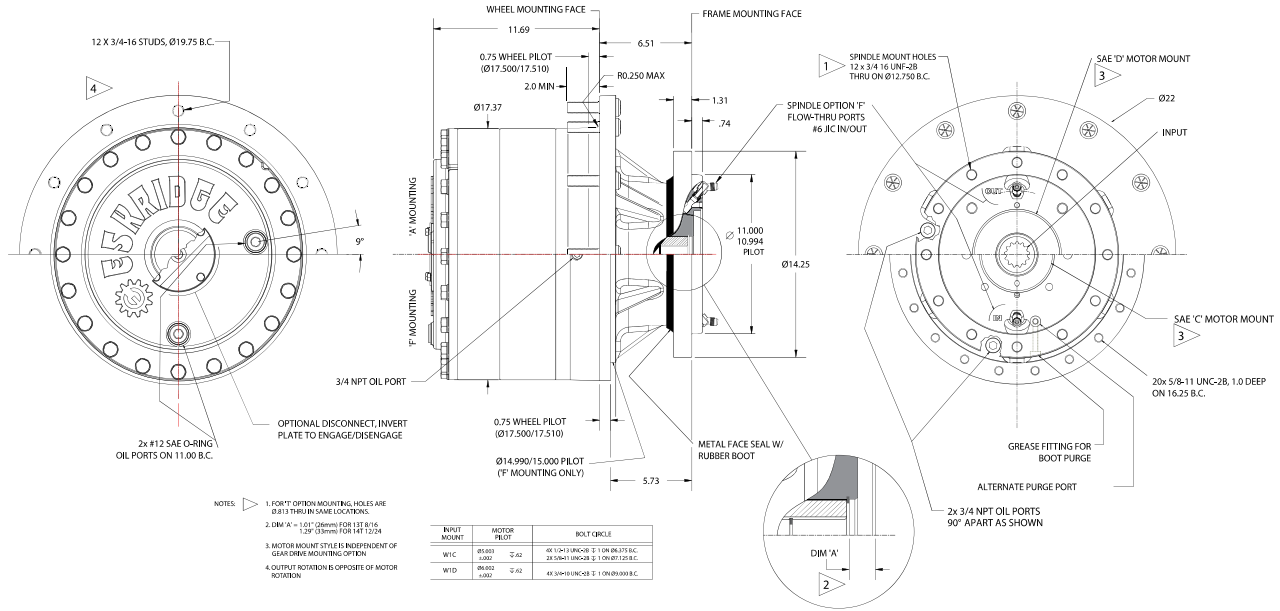
Maximum Intermittent Output Torque 440,000 in-lb (49,720 N-m)
 Continuous Output Torque 220,000 in-lb (24,860 N-m)
 Peak Torque Rating..... Consult Eskridge
 Maximum Input Speed (No Load)..... 3,000 RPM

Consult your Eskridge representative to determine ratings for your specific application or configuration.

General Dimensions for Flanged (ordering option 'A') and Flangeless (ordering option 'F') Wheel Flange

Other options may be available. See ordering information on last page or contact your Eskridge representative for more details.

Values are shown as "inches (millimeters)."





Oil Capacities

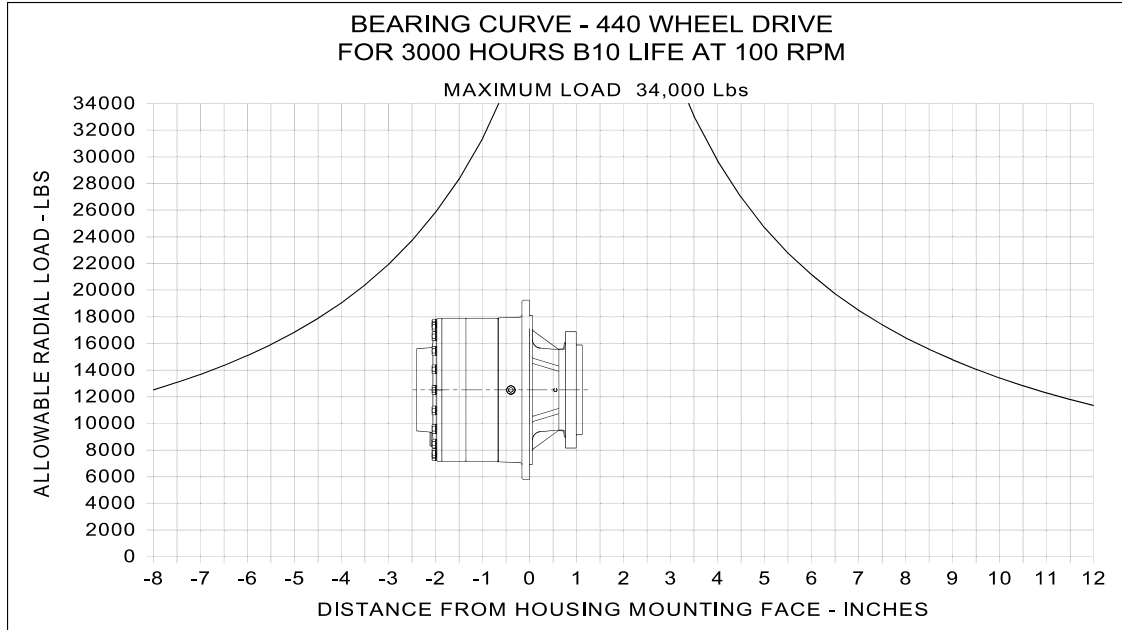
| Position | Quantity |
|------------|-------------------------|
| Vertical | 11.0 quarts/10.4 liters |
| Horizontal | 8.0 quarts/7.6 liters |

All units are shipped dry (without oil).

Approximate Unit Weight

755 lbs / 342 kg - 'A' mounting

715 lbs / 324 kg - 'F' mounting



To adjust for loads and speeds other than those shown on above curve, use this formula:

$$\text{Adjusted Life (hours)} = 3000 \left(\frac{100\text{rpm}}{\text{Speed(Adjusted)}} \right) \times \left(\frac{\text{Load (Curve)}}{\text{Load (Adjusted)}} \right)^{10/3}$$



440 Gear Drive - Wheel Drive

Typical Applications: Industrial, Marine or Mobile Equipment

(913) 782-1238 (Tel)
 (913) 782-4206 (Fax)
Sales@EskridgeInc.com
www.EskridgeInc.com
 FORM: PS440W_0807
 Page 3 of 3

Ordering Information

Example Part Number: 440LAW1C4-18-Z

