

Performance Ratings

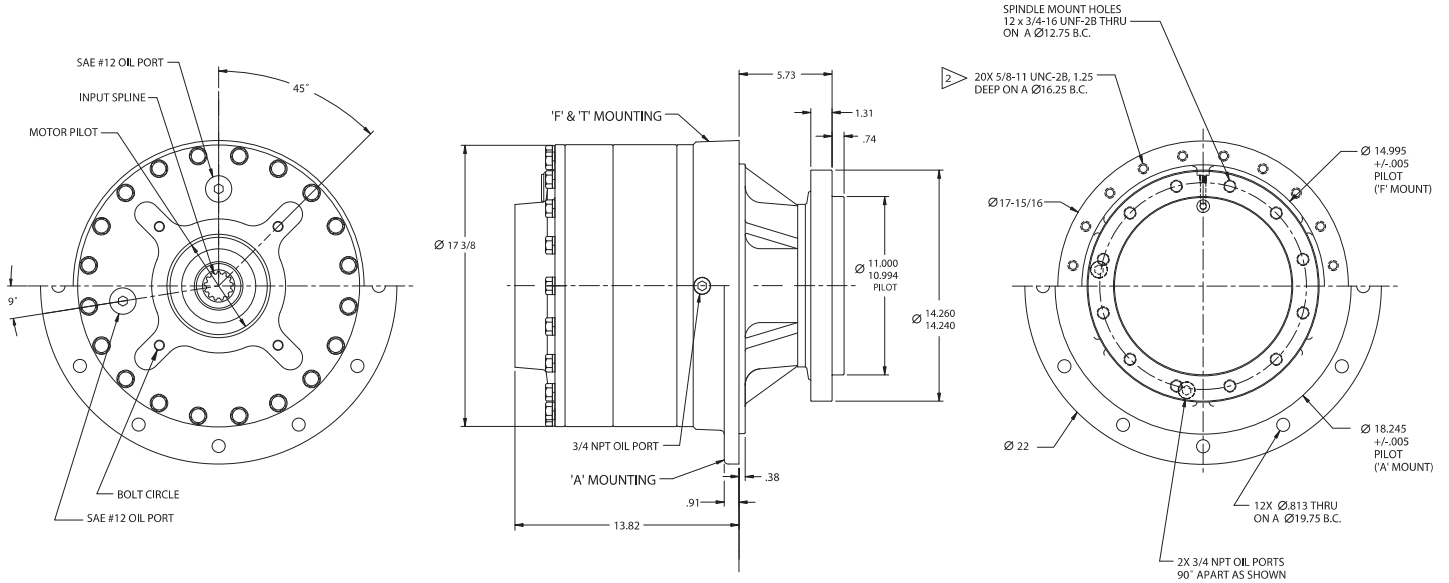
Maximum Intermittent Output Torque	440,000 in-lb (49,720 N-m)
Continuous Output Torque	220,000 in-lb (24,860 N-m)
Peak Torque Rating.....	Consult Eskridge
Maximum Input Speed (No Load).....	3,000 RPM

Consult your Eskridge representative to determine ratings for your specific application or configuration.

General Dimensions for Flanged (ordering option 'A') and Flangeless (ordering option 'F') Gear Drive Mountings

Other options may be available. See ordering information on last page or contact your Eskridge representative for more details.

Values are shown as "inches (millimeters)."



Approximate Unit Weight

765 lbs / 347 kg - 'A' base

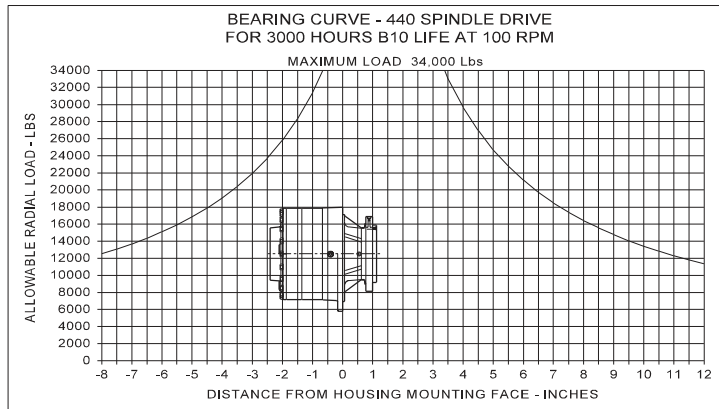
725 lbs / 329 kg - 'F' base

Oil Capacities

Mounting Position	Quantity
Vertical, Pinion Up	14.00 quarts / 13.25 liters
Vertical, Pinion Down	11.00 quarts / 10.41 liters
Horizontal	8.00 quarts / 7.57 liters

All units are shipped dry (without oil).

Bearing Curve



To adjust for loads and speeds other than those shown on above curve, use this formula:

$$\text{Adjusted Life (hours)} = 3000 \left(\frac{100\text{rpm}}{\text{Speed(Adjusted)}} \right) \times \left(\frac{\text{Load (Curve)}}{\text{Load (Adjusted)}} \right)^{10/3}$$



Ordering Information

Example Part Number: 440LAS1D9-36-Z

