

## Performance Ratings

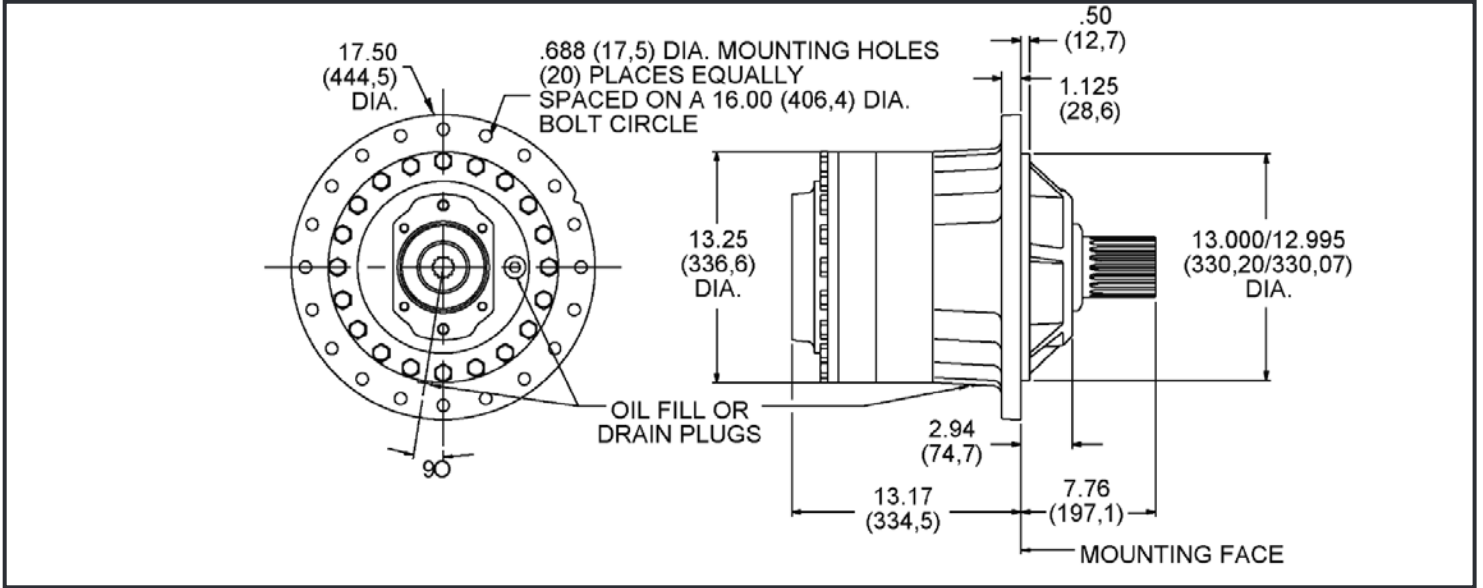
Maximum Intermittent Output Torque .....	250,000 in-lb (28,250 N-m)
Continuous Output Torque .....	Consult Eskridge
Peak Torque Rating.....	Consult Eskridge
Maximum Input Speed (No Load).....	3,000 RPM

Consult your Eskridge representative to determine ratings for your specific application or configuration.

## General Dimensions for Round Flanged Gear Drive Mounting (ordering option 'A')

Other options may be available. See ordering information on last page or contact your Eskridge representative for more details.

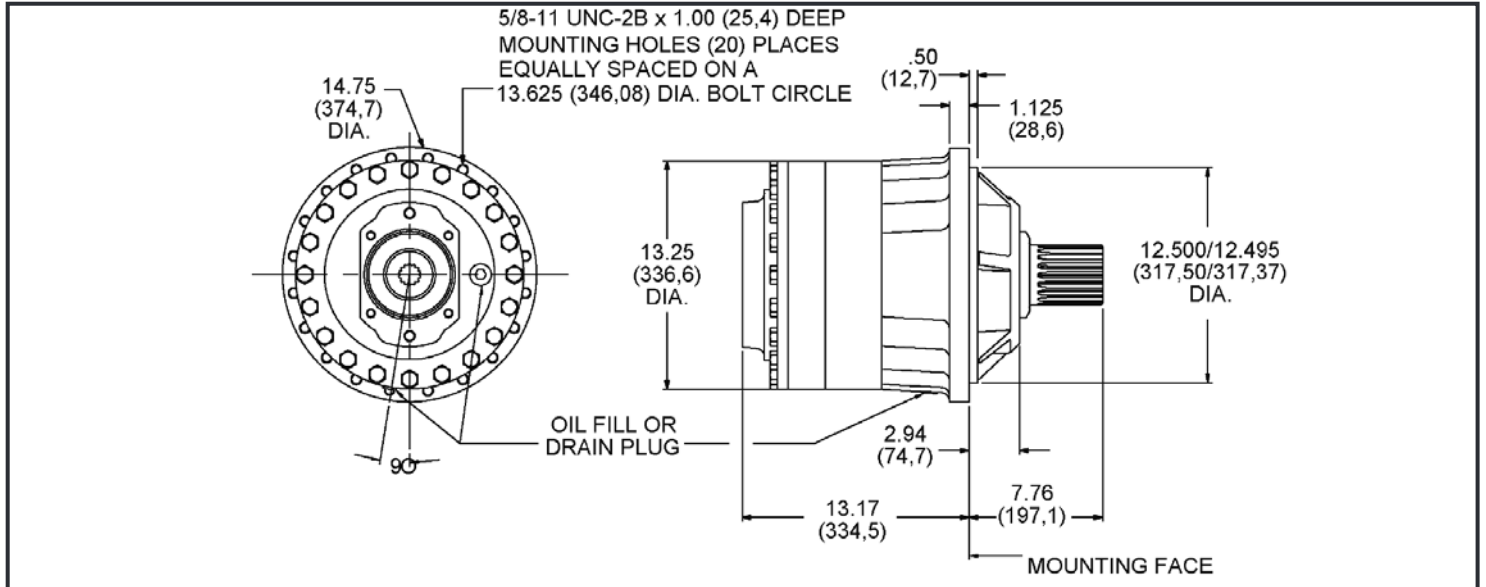
Values are shown as "inches (millimeters)."



## General Dimensions for Flangeless Gear Drive Mounting (ordering option 'F')

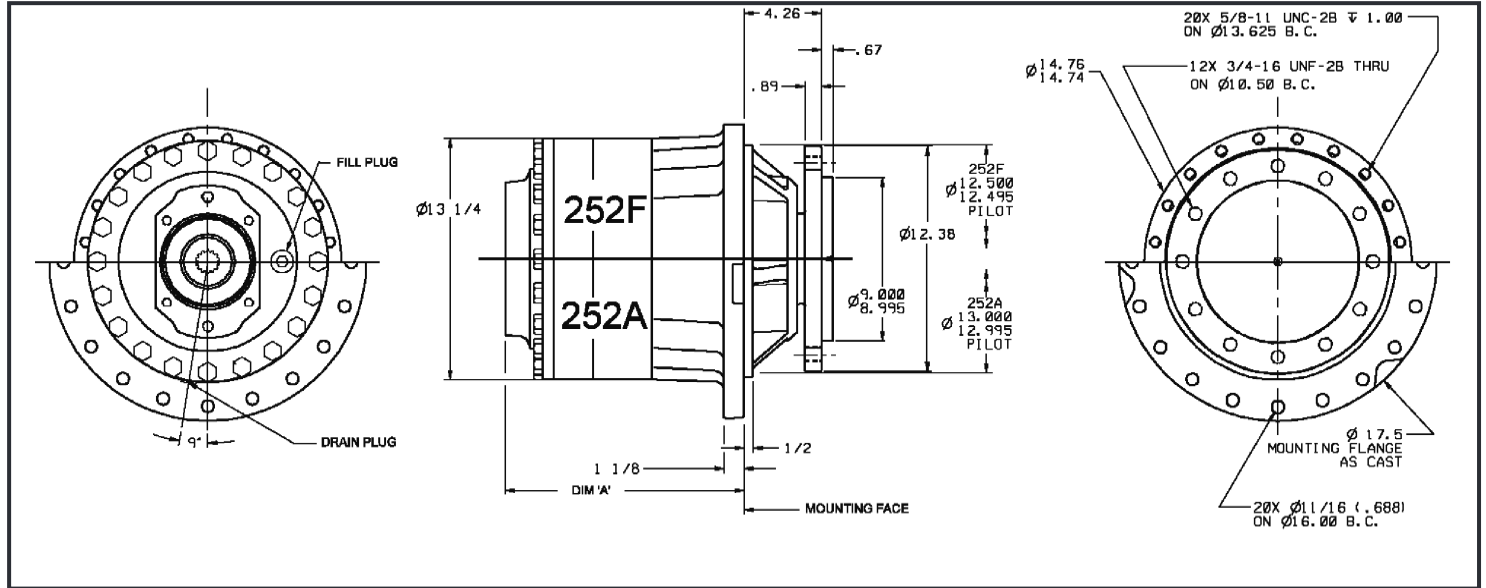
Other options may be available. See ordering information on last page or contact your Eskridge representative for more details.

Values are shown as "inches (millimeters)."



**General Dimensions for Spindle Output**  
**Round Flanged Gear Drive Mounting (ordering option 'A')**  
**Flangeless Gear Drive Mounting (ordering option 'F')**

Other options may be available. See ordering information on last page or contact your Eskridge representative for more details.  
 Values are shown as "inches (millimeters)." *(Note: The drawing uses millimeter values for dimensions.)*



## Approximate Unit Weight

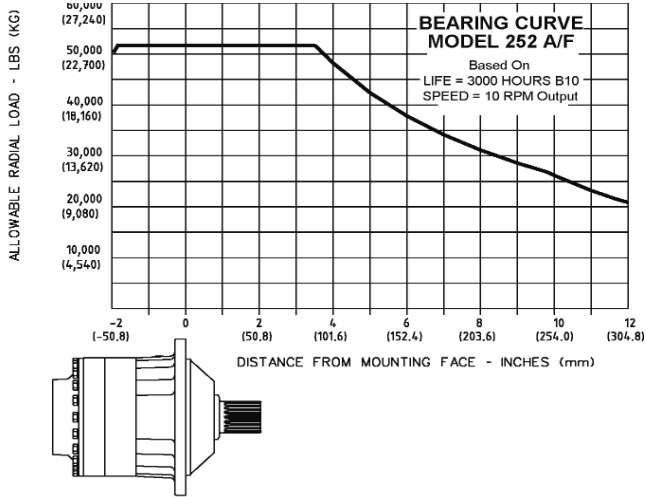
415 lbs / 188 kg

## Oil Capacities

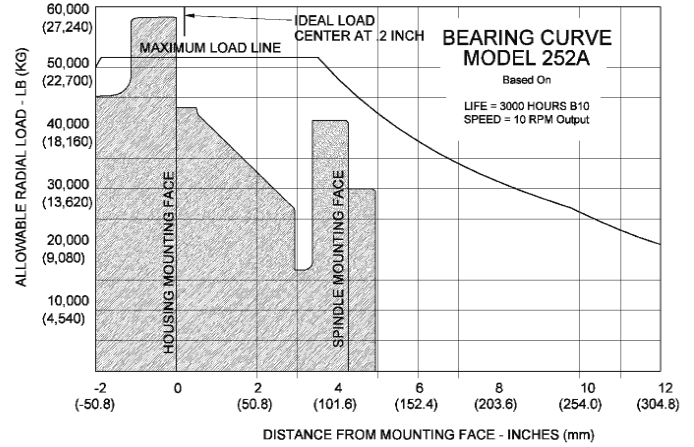
Position	Quantity
Vertical	12.75 pts. / 6.0 L
Horizontal	6.75 pts. / 3.2 L

All units are shipped dry (without oil).

## Bearing Curve (Shaft)



## Bearing Curve (Spindle)

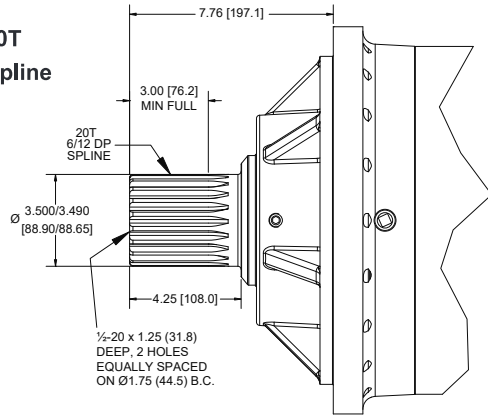


To adjust for loads and speeds other than those shown on above curve, use this formula:

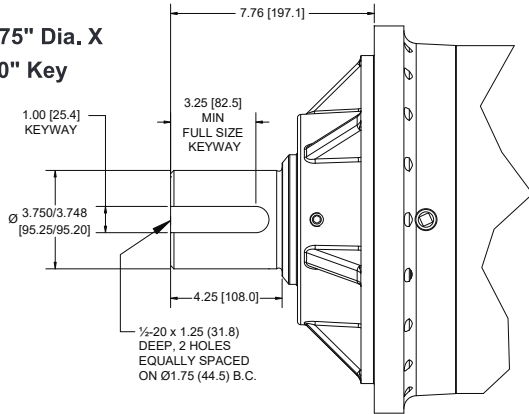
$$\text{Adjusted Life (hours)} = 3000 \left( \frac{10\text{rpm}}{\text{Speed(Adjusted)}} \right) \times \left( \frac{\text{Load (Curve)}}{\text{Load (Adjusted)}} \right)^{10/3}$$

## Output Shaft Options Values are shown as "inches (millimeters)"

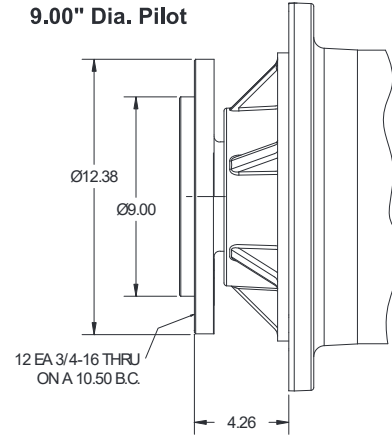
**D1 - 20T  
6/12 DP Spline**



**D2 - 3.75" Dia. X  
1.00" Key**



**S1 - Spindle  
9.00" Dia. Pilot**





# 252 Gear Drive

Typical Applications: Industrial, Marine or Mobile Equipment

(913) 782-1238 (Tel)  
(913) 782-4206 (Fax)  
Sales@EskridgeInc.com  
www.EskridgeInc.com  
FORM: PS252\_0310  
Page 6 of 6

## Ordering Information

Example Part Number: 252AD2C4-51-Z

