

Performance Ratings

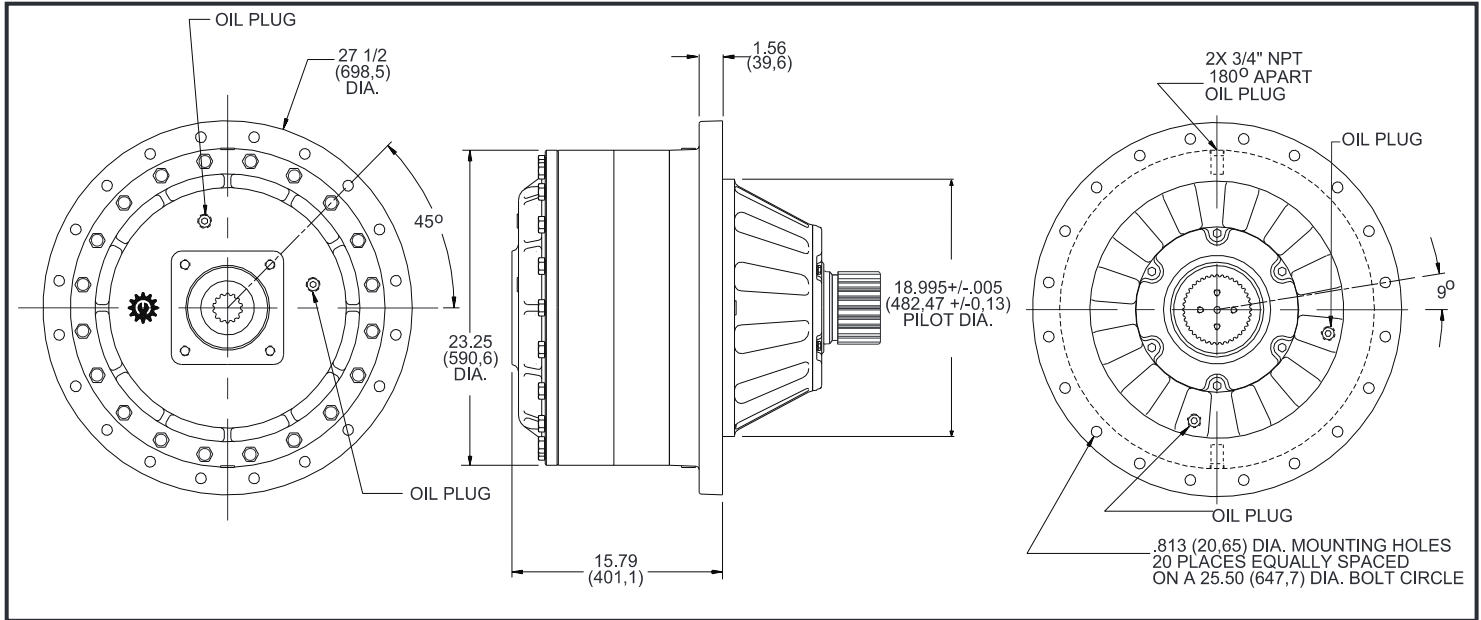
Maximum Intermittent Output Torque	1,400,000 in-lb (158,000 N-m)
Continuous Output Torque	700,000 in-lb (79,000 N-m)
Peak Torque Rating.....	Consult Eskridge
Maximum Input Speed (No Load).....	4,000 RPM

Consult your Eskridge representative to determine ratings for your specific application or configuration.

General Dimensions for Shaft Output Flanged Gear Drive Mounting (ordering option 'A')

Other options may be available. See ordering information on last page or contact your Eskridge representative for more details.

Values are shown as "inches (millimeters)."





ESKRIDGE

1400 Shaft/Spindle Drive

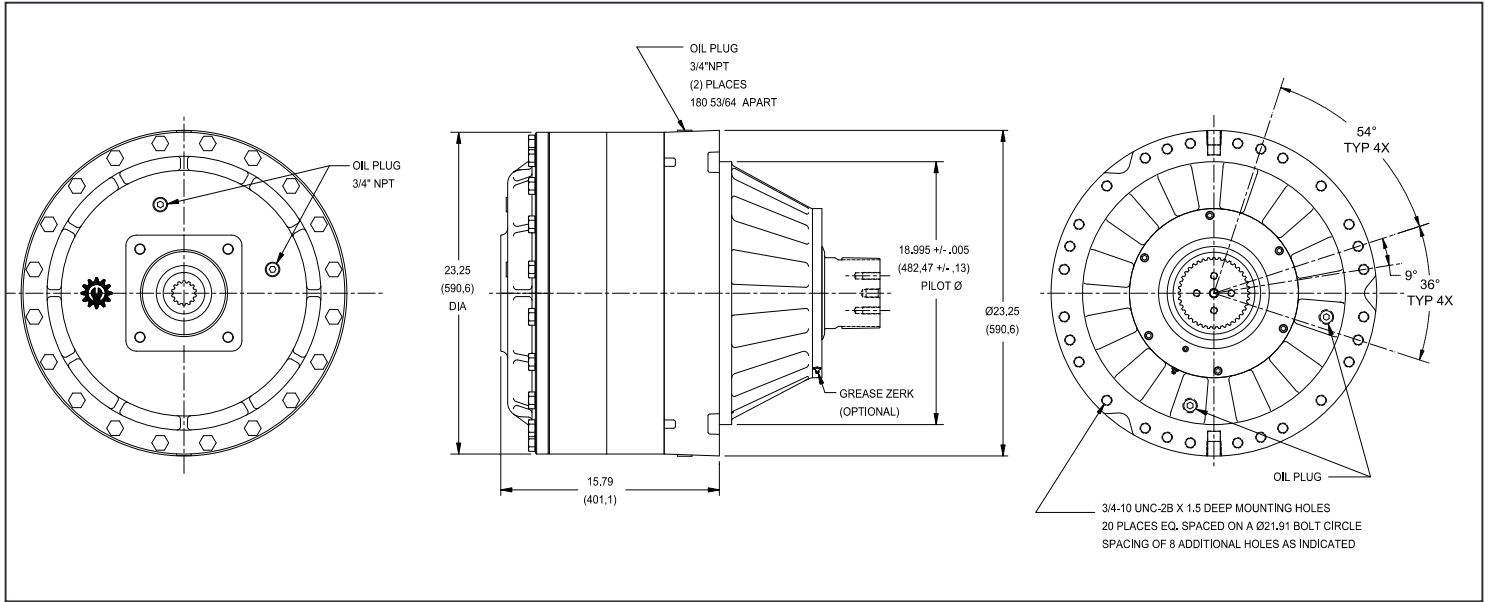
Typical Applications: Industrial, Marine or Mobile Equipment

(913) 782-1238 (Tel)
(913) 782-4206 (Fax)
Sales@EskridgeInc.com
www.EskridgeInc.com
FORM: PS1400_0308
Page 2 of 7

General Dimensions for Shaft Output Flangeless Gear Drive Mounting (ordering option 'F')

Other options may be available. See ordering information on last page or contact your Eskridge representative for more details.

Values are shown as "inches (millimeters)."

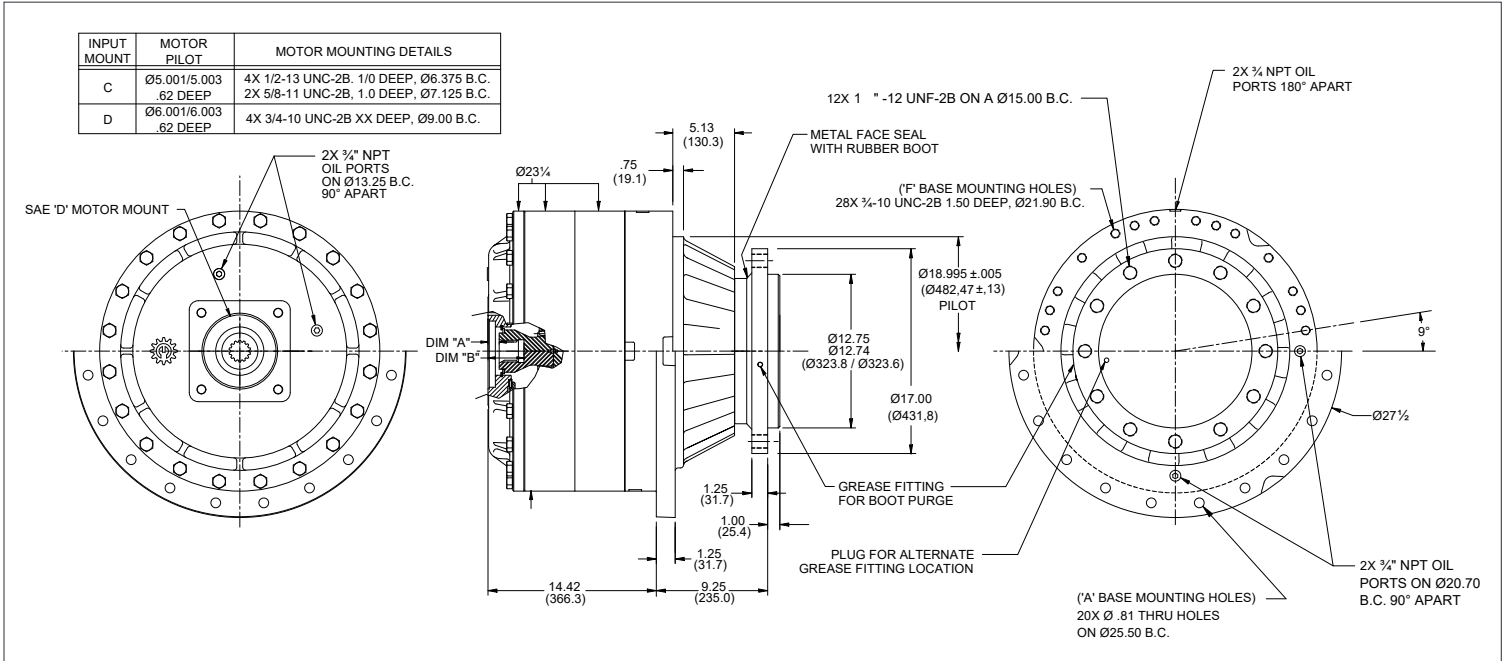


General Dimensions for Spindle Output Flanged (ordering option 'A') and Flangeless (ordering option 'F') Gear Drive Mountings

Other options may be available. See ordering information on last page or contact your Eskridge representative for more details.
 Values are shown as "inches (millimeters)."

Input Spline Data

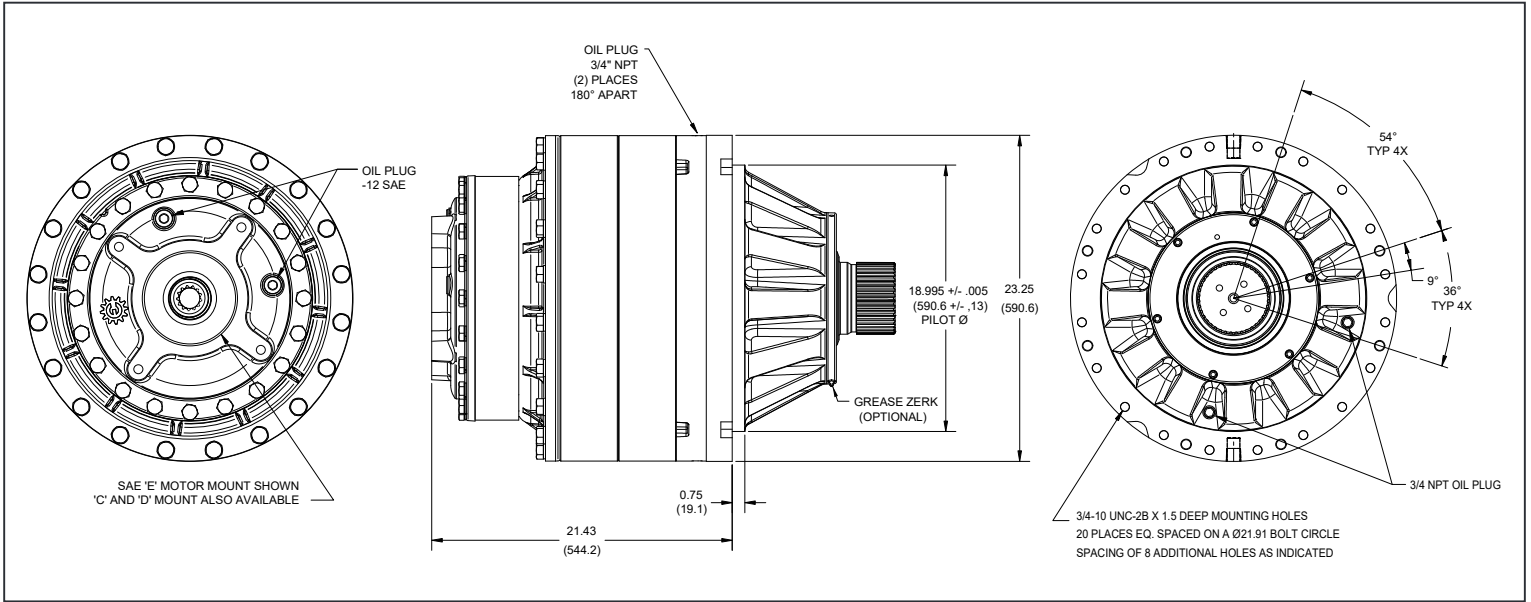
Dimension "A"			
14 T	17T	16T	13T
.94	.94	1.10	1.10
(23.9)	(23.9)	(27.9)	(27.9)
Dimension "B"			
14 T	17T	16T	13T
3.00	3.62	3.62	3.00
(76.2)	(91.5)	(91.5)	(76.2)



General Dimensions for Shaft Output Flangeless Triple Planetary Gear Drive Mounting (ordering option 'F')

This unit is also available with a flanged base (Ordering option 'A'). Other options may be available. See ordering information on last page or contact your Eskridge representative for more details.

Values are shown as "inches [millimeters]."



Oil Capacities

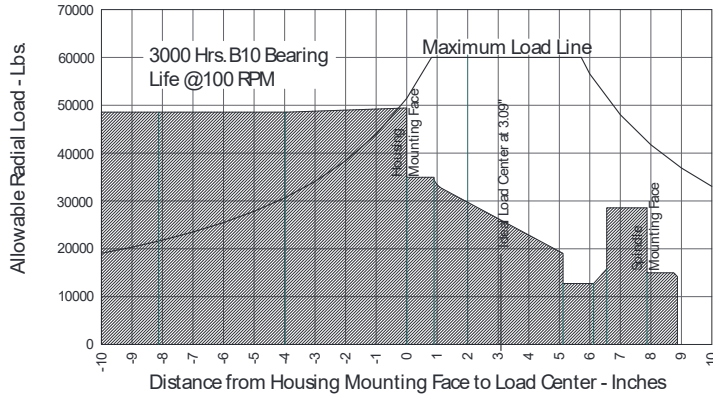
Position	Quantity
Vertical	6.50 gal. / 25 L
Horiz.	4.5 gal / 17 L

All units are shipped dry (without oil).

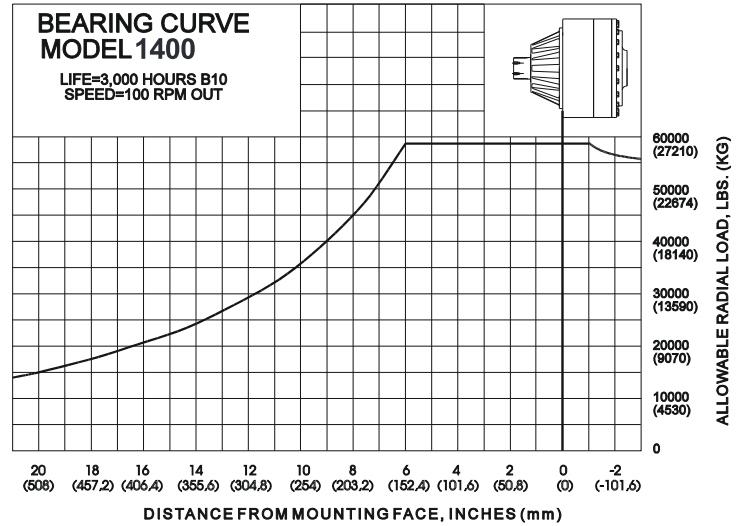
Approximate Unit Weight

1,425 - 1,500 lbs / 646 - 680 kg

Spindle Bearing Curve



Shaft Bearing Curve



To adjust for loads and speeds other than those shown on above curve, use this formula:

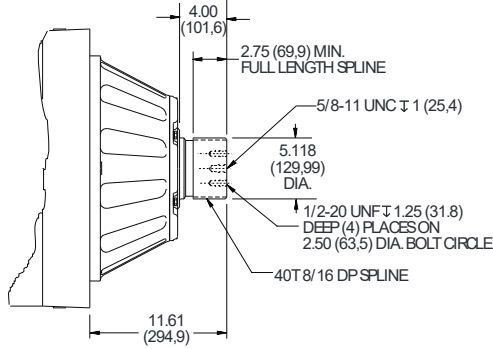
$$\text{Adjusted Life (hours)} = 3000 \left(\frac{100\text{rpm}}{\text{Speed(Adjusted)}} \right) \times \left(\frac{\text{Load (Curve)}}{\text{Load (Adjusted)}} \right)^{10/3}$$

Output Shaft Options Values are shown as "inches (millimeters)"

D1 - 40T 8/16 DP Spline

Adapter Hub Available
 Part Number: 60-004-4042
 Retainer Kit: 60-018-0901

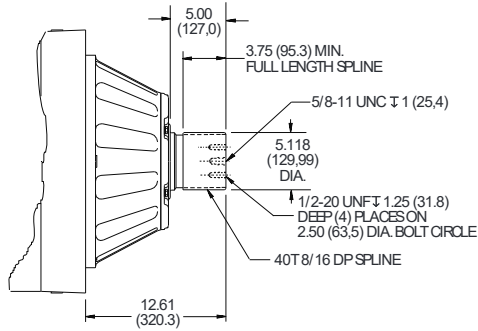
See Hubs & Pinions technical data sheet for details.



**S1 - 17" Dia. Spindle
 12 x 1.125" - 12 UNF
 on 15" dia. Bolt Circle
 12.75" dia. Pilot**

**See page 3 drawing
 for additional details**

D3 - 40T 8/16 DP Spline (long)



**S2 - 17" Dia. Spindle
 12 x 1.22" Thru-Hole
 on 15" dia. Bolt Circle
 12.75" dia. Pilot**

**(same as S1, except
 thru holes instead of
 threaded)**



1400 Shaft/Spindle Drive

Typical Applications: Industrial, Marine or Mobile Equipment

(913) 782-1238 (Tel)
 (913) 782-4206 (Fax)
 Sales@EskridgeInc.com
 www.EskridgeInc.com
 FORM: PS1400_0308
 Page 7 of 7

Ordering Information

Example Part Number: 1400LAS1D9-26-Z

