

Performance Ratings

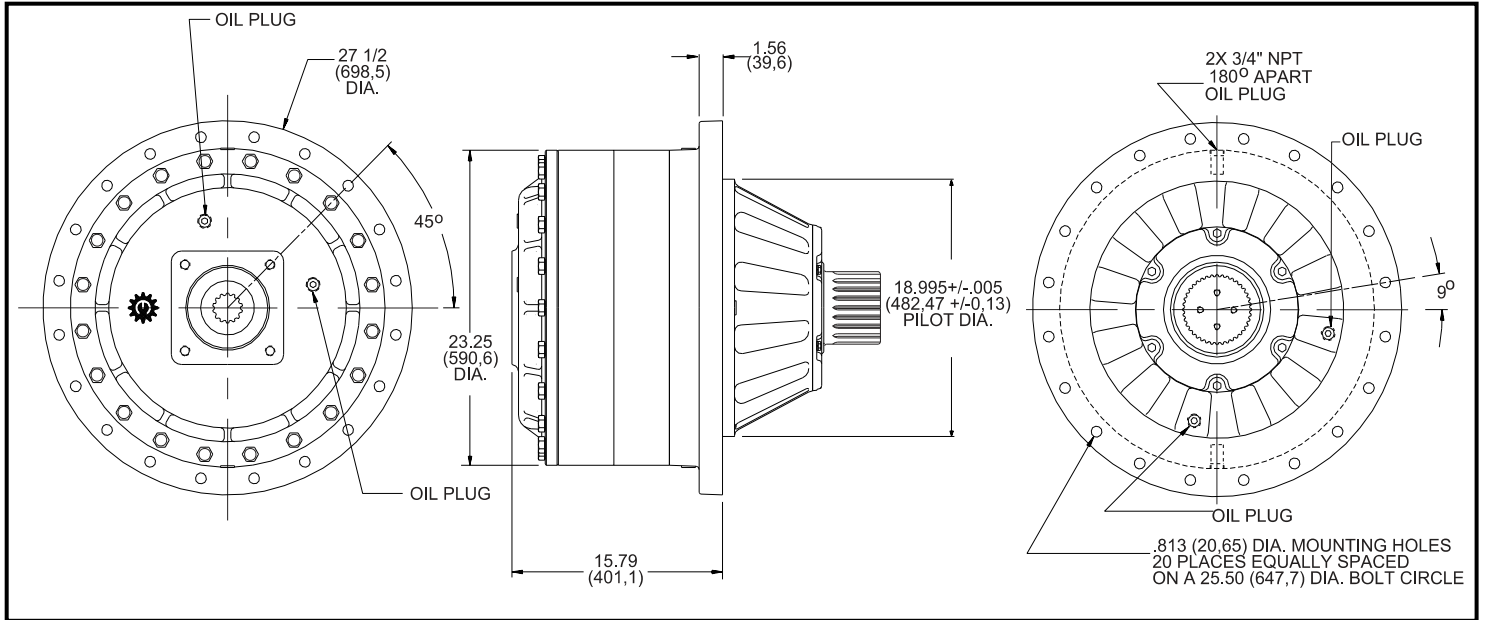
Maximum Intermittent Output Torque	1,000,000 in-lb (113,000 N-m)
Continuous Output Torque	500,000 in-lb (56,500 N-m)
Peak Torque Rating.....	Consult Eskridge
Maximum Input Speed (No Load).....	4,000 RPM

Consult your Eskridge representative to determine ratings for your specific application or configuration.

General Dimensions for Shaft Output Flanged Gear Drive Mounting (ordering option 'A')

Other options may be available. See ordering information on last page or contact your Eskridge representative for more details.

Values are shown as "inches (millimeters)."

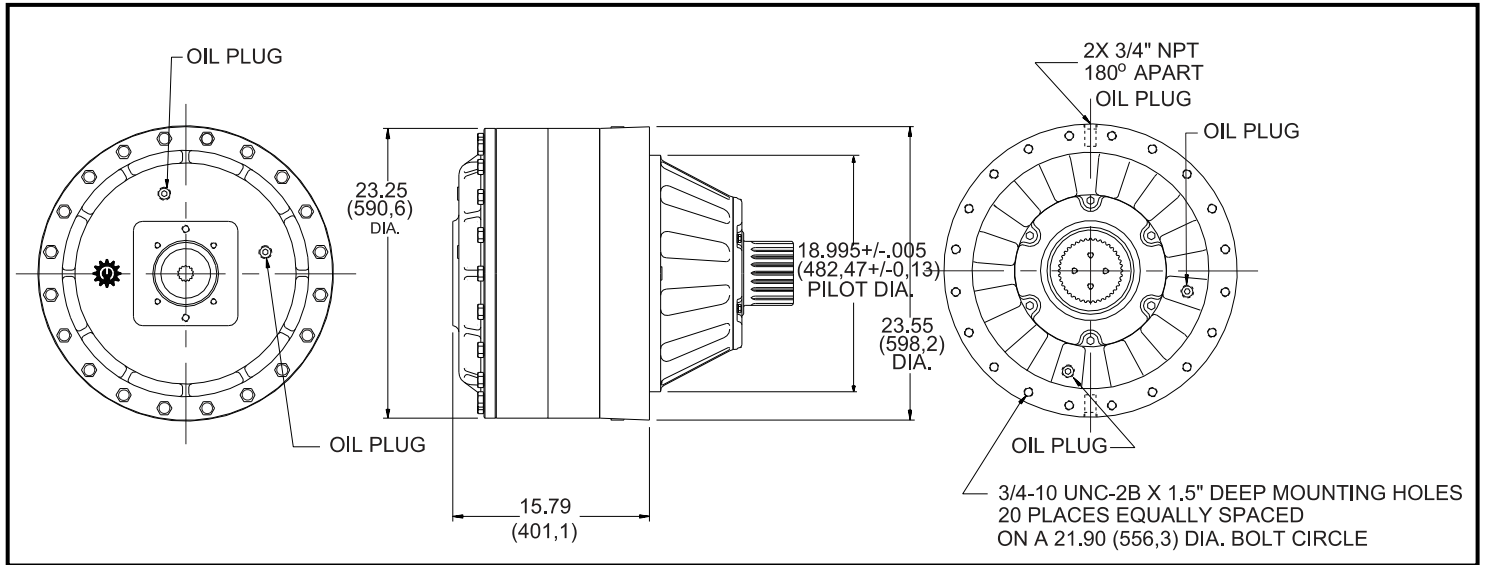




General Dimensions for Shaft Output Flangeless Gear Drive Mounting (ordering option 'F')

Other options may be available. See ordering information on last page or contact your Eskridge representative for more details.

Values are shown as "inches (millimeters)."



General Dimensions for Spindle Output Flanged (ordering option 'A') and Flangeless (ordering option 'F') Gear Drive Mountings

Other options may be available. See ordering information on last page or contact your Eskridge representative for more details.

Values are shown as "inches (millimeters)."

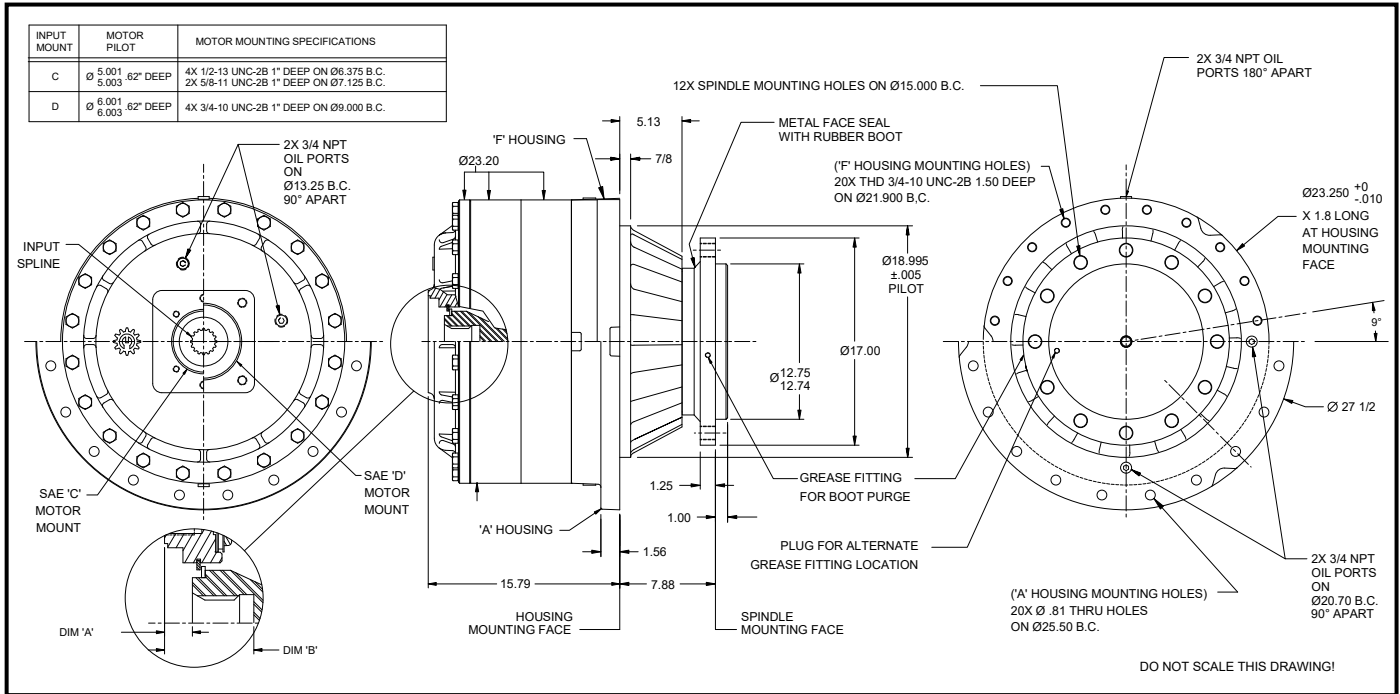
Input Spline Data

Dimension "A"

14 T	17T	16T	13T
.94	.94	1.10	1.10
(23.9)	(23.9)	(27.9)	(27.9)

Dimension "B"

14 T	17T	16T	13T
3.00	3.62	3.62	3.00
(76.2)	(91.5)	(91.5)	(76.2)



Approximate Unit Weight

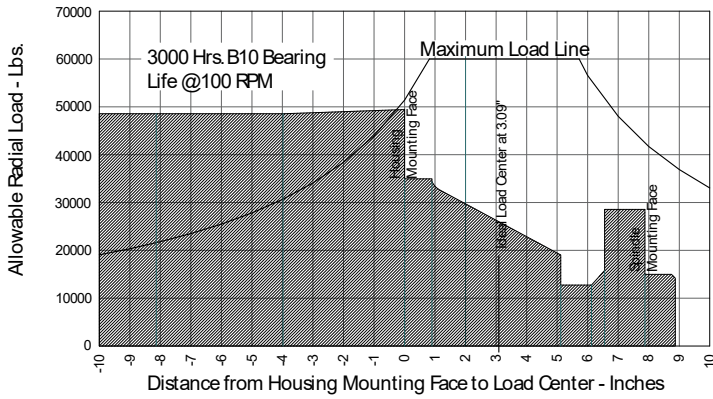
1,350 - 1,425 lbs / 614 - 648 kg

Oil Capacities

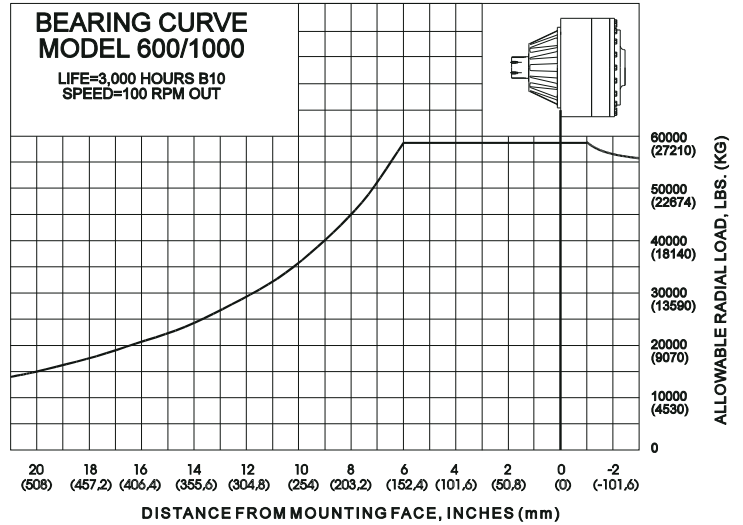
Position	Quantity
Vertical	9.50 gal. / 36 L
Horiz.	5.00 gal / 19 L

All units are shipped dry (without oil).

Spindle Bearing Curve



Shaft Bearing Curve



To adjust for loads and speeds other than those shown on above curve, use this formula:

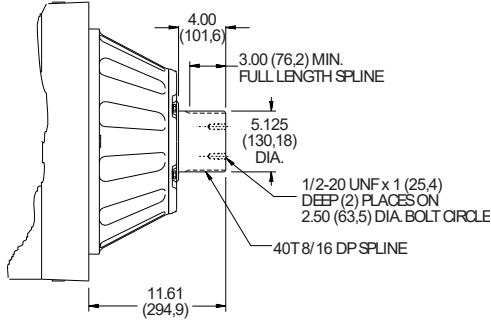
$$\text{Adjusted Life (hours)} = 3000 \left(\frac{100\text{rpm}}{\text{Speed(Adjusted)}} \right) \times \left(\frac{\text{Load (Curve)}}{\text{Load (Adjusted)}} \right)^{10/3}$$

Output Shaft Options Values are shown as "inches (millimeters)"

**D1 - 40T
8/16 DP Spline**

Adapter Hub Available
 Part Number: 60-004-4042
 Retainer Kit: 60-018-0901

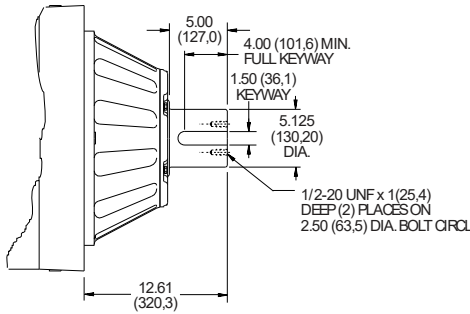
See Hubs & Pinions technical data sheet for details.



**S1 - 17" Dia. Spindle
12 x 1.125" - 12 UNF
on 15" dia. Bolt Circle
12.75" dia. Pilot**

Consult Eskridge for Image

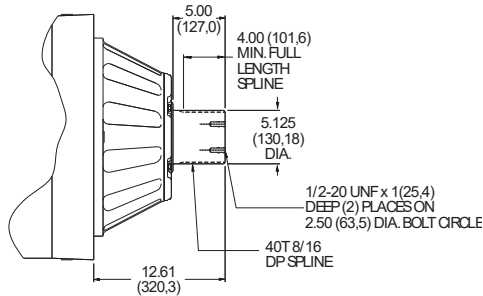
**D2 - 5.125" Dia. X
1.50" Key X 5"**



**S2 - 17" Dia. Spindle
12 x 1.22" Thru-Hole
on 15" dia. Bolt Circle
12.75" dia. Pilot**

Consult Eskridge for Image

**D3 - 40T
8/16 DP Spline (long)**





Ordering Information

Example Part Number: 1000LAS1D9-76-Z

