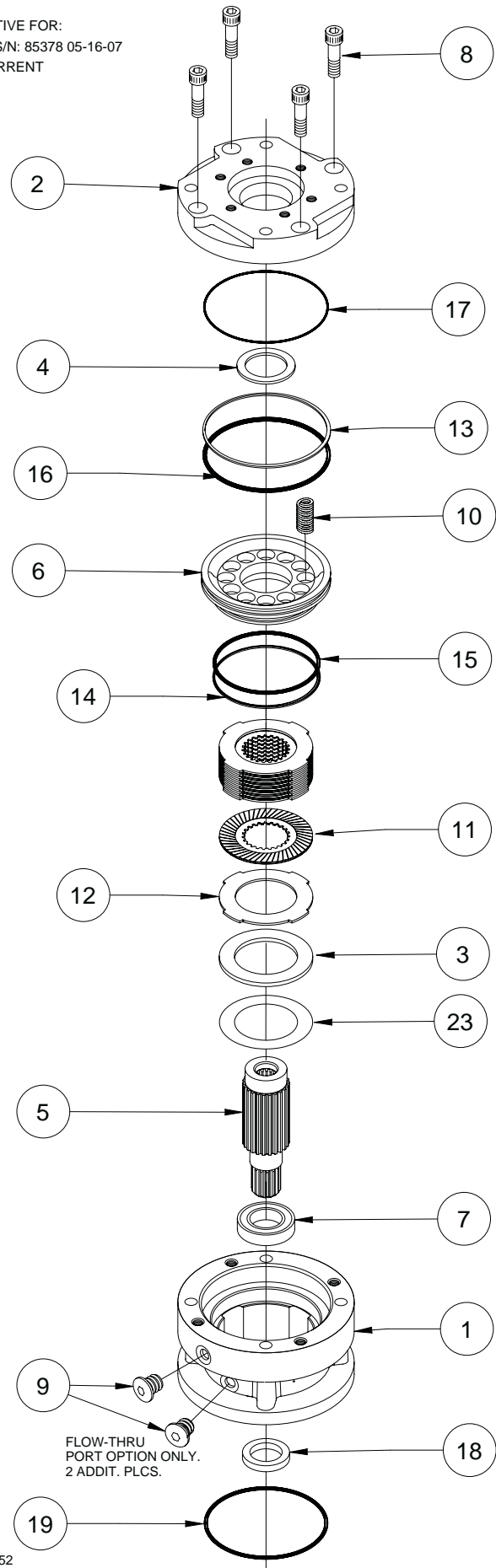


# Model 95C

ITEM	QTY	PART NO.	DESCRIPTION
1	1	95-004-1004	CASE - (STANDARD)
		95-004-1124	CASE - FLOW-THRU COOLING PORTS ('F' OPTION)
2	1	95-004- (A)	COVER -
3	1	95-004-1032	SPACER -
4	1	95-004-1041	THRUST WASHER -
		01-100-0231	BEARING- (DOUBLE BRG. 'D' OPTION)
5	1	95-004- (B)	SHAFT -
6	1	95-004-1092	PISTON -
7	1	01-100-0221	BEARING
8	4	01-150-0030	SOC. HD. CAP SCR. (1/2-13 X 1.25 GR8)
9	1	01-208-0020	HOLLOW HEX PLUG (7/16-20)
10	*	01-261-0501	SPRING (3/4 X 1 BLUE)
11	*	01-288-0072	FRICITION DISC-ROTOR
12	*	01-288-0082	SEPARATOR PLATE-STATOR
13	1	01-400-0191	BACKUP RING
14	1	01-400-0201	BACKUP RING
15	1	01-402-0601	O-RING - (BUNA N) (STANDARD)
		01-402-0870	O-RING - (URETHANE) ('E' OPTION)
16	1	01-402-0611	O-RING - (BUNA N) (STANDARD)
		01-402-0880	O-RING - (URETHANE) ('E' OPTION)
17	1	01-402-0621	O-RING
18	1	01-405-0561	SEAL
19	1	01-402-0010	O-RING
20	1	(C)	MOTOR GASKET OR O-RING
23	4	80-004-1151	SHIM

EFFECTIVE FOR:  
FROM S/N: 85378 05-16-07  
TO: CURRENT



(A) (C)

CODE	INPUT MOUNT	COVER		MOTOR O-RING
		SINGLE BEARING	DOUBLE BEARING	
A	SAE 'A' 2/4 BOLT	95-004-1023	95-004-1083	90-004-1061 (GASKET)
B	SAE 'B' 2-BOLT	95-004-1143	95-004-2073	01-402-0820
H	SAE 'B' 4-BOLT	95-004-1103	95-004-1113	
K	SAE 'C' 2-BOLT	95-004-1173	95-004-2063	01-402-0010
C	SAE 'C' 4-BOLT	95-004-1013	95-004-1073	

(B)

SHAFT IN/OUT	PART NO.
6B/14T	95-004-1063
6B/21T	95-004-2083
13T/14T	● 95-004-1053 SHAFT AND 33-004-0231 14T TO 13T SPLINE ADAPTOR
14T/14T	95-004-1053
14T/21T	95-004-2123
17T/14T	95-004-1163

OPTIONAL KITS	PART NO.		ITEMS INCLUDED
	(STANDARD)	('E' OPTION)	
SEAL KIT	95-016-1181	95-016-1211	13,14,15,16,17,18,19 & 20 (ALL OPTIONS)
FRICITION DISC KIT	95-016-2491	95-016-2491	11
SEPARATOR PLATE KIT	95-016-2501	95-016-2501	12
MASTER REBUILD KIT SGL BRG	95-015-3241	95-015-3291	4,7, SEAL & FRICTION KITS
MASTER REBUILD KIT DBL BRG	95-015-3251	95-015-3301	4,7, SEAL & FRICTION KITS

NOTES:

- TOTAL QTY OF FRICTION DISCS (ITEM 11) AND SEPARATORS (ITEM 12) MUST EQUAL 17. FULL COMPLEMENT BRAKE INCLUDES 8 FRICTION DISCS (ITEM 11) AND 9 SEPARATORS (ITEM 12).
- QTY OF SPRINGS MUST BE 2,3,4,6,8,9,10 OR 12 AS DETERMINED BY SPECIFIC BRAKE REQUIREMENTS.
- COMPATIBLE WITH CHAR-LYNN 4000 MOTOR. REPLACES 95-004-1153 SHAFT.
- COMPATIBLE WITH CHAR-LYNN 6000 MOTOR WITH "SINGLE BEARING" OPTION ONLY.
- STANDARD PISTON O-RINGS FOR 3,000 PSI ARE BLACK NITRILE. OPTION 'E' EXTRA PRESSURE O-RINGS FOR 5,000 PSI SYSTEM PRESSURE ARE LIGHT YELLOW OR CREAM COLORED URETHANE.

ECN: 2652  
X95C-AI

DATE 05-16-07