

Exploded View Drawing

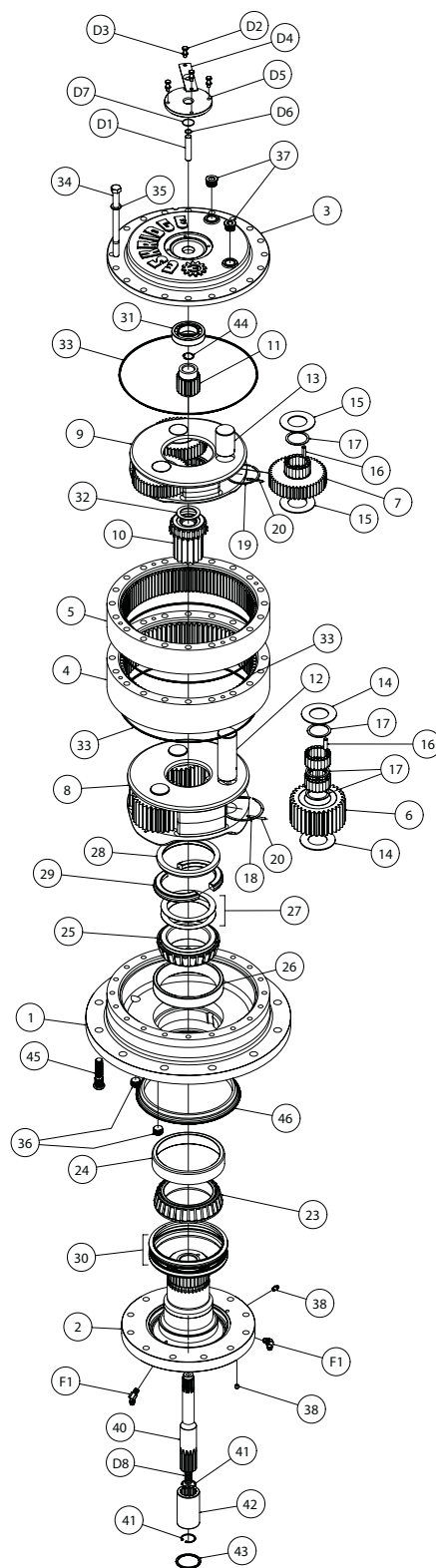
ITEM	QTY	DESCRIPTION	MODEL 440 RATIOS			
			18:1	27:1	35:1	46:1
1	1	Base 'A'	42-004-3092	42-004-3092	42-004-3092	42-004-3092
		Base 'F' flangeless	42-004-3072	42-004-3072	42-004-3072	42-004-3072
2	1	Shaft SAE 'C' input	42-004-4072	42-004-4072	42-004-4072	42-004-4072
		Shaft SAE 'D' input	42-004-4082	42-004-4082	42-004-4082	42-004-4082
3	1	Cover - Non-disconnect	42-004-2062	42-004-2062	42-004-2062	42-004-2062
		Cover - disconnect	42-004-2042	42-004-2042	42-004-2042	42-004-2042
4	1	Ring gear secondary - WD	42-004-1032	42-004-1032	42-004-1032	42-004-1032
5	1	Ring gear primary - WD	42-004-1042	42-004-1042	42-004-1042	42-004-1042
6	3	Planet gear - sec	42-004-1092	42-004-1092	42-004-1092	42-004-1242
7	3	Planet gear - pri	42-004-1102	42-004-1112	42-004-1272	42-004-1272
8	1	Carrier - secondary	42-004-1402	42-004-1402	42-004-1402	42-004-1392
9	1	Carrier - primary	42-004-1062	42-004-1072	42-004-1282	42-004-1282
10	1	Sun gear secondary	42-004-1472	42-004-1472	42-004-1472	42-004-1292
11	1	Input gear	42-004-1452	42-004-1462	42-004-1312	42-004-1312
12	3	Planet shaft - sec	42-004-1332	42-004-1332	42-004-1332	42-004-1332
13	3	Planet shaft - pri	42-004-1342	42-004-1342	42-004-1342	42-004-1342
14	6	Planet thrust washer-sec	42-004-1362	42-004-1362	42-004-1362	42-004-1362
15	6	Planet thrust washer - pri	42-004-1362	42-004-1362	42-004-1362	42-004-1362
16	180	Roller sec-2 x 20, pri-1 x 20	01-106-0040	01-106-0040	01-106-0040	01-106-0040
17	12	Roller spacer washer	42-004-1352	42-004-1352	42-004-1352	42-004-1352
18	1	Retaining ring - secondary	01-160-0680	01-160-0680	01-160-0680	01-160-0680
19	1	Retaining ring - sun gear	01-160-0690	01-160-0690	01-160-0690	01-160-0690
20	6	Roll pin	01-153-0220	01-153-0220	01-153-0220	01-153-0220
23	1	Bearing outer cone (67391)	01-102-0300	01-102-0300	01-102-0300	01-102-0300
24	1	Bearing outer cup (67322)	01-103-0290	01-103-0290	01-103-0290	01-103-0290
25	1	Bearing inner cone (71450)	01-102-0280	01-102-0280	01-102-0280	01-102-0280
26	1	Bearing inner cup (71750)	01-103-0280	01-103-0280	01-103-0280	01-103-0280
27	*	Shim	42-004-1202	42-004-1202	42-004-1202	42-004-1202
28	1	Lock ring	42-004-1212	42-004-1212	42-004-1212	42-004-1212
29	1	Split ring	42-004-1222	42-004-1222	42-004-1222	42-004-1222
30	1	Face seal (CAT 9G-5315)	01-406-0080	01-406-0080	01-406-0080	01-406-0080
31	1	Support bearing (7210WN)	01-100-0310	01-100-0310	01-100-0310	01-100-0310
32	1	Thrust washer	-	-	-	01-112-0320
33	3	O-ring	01-402-0840	01-402-0840	01-402-0840	01-402-0840
34	20	Hex head capscrew 5/8-11 X 8.5	01-150-1840	01-150-1840	01-150-1840	01-150-1840
35	20	Lockwasher	01-166-0040	01-166-0040	01-166-0040	01-166-0040
36	3	Plug - 3/4 NPT magnetic	01-207-0100	01-207-0100	01-207-0100	01-207-0100
37	2	Plug - sae -12 port (05HP-12)	01-208-0030	01-208-0030	01-208-0030	01-208-0030
38	1	Grease Fitting 1/8 NPT	01-215-0010	01-215-0010	01-215-0010	01-215-0010
39	1	Plug - 1/8 NPT	01-207-0030	01-207-0030	01-207-0030	01-207-0030
40	1	Input shaft	42-004-1442	42-004-1442	42-004-1302	42-004-1302
41	2	Retaining ring	01-160-0580	01-160-0580	01-160-0580	01-160-0580
42	1	Input coupling, 13T 8/16	42-004-1322	42-004-1322	42-004-1322	42-004-1322
		For 14 tooth, 12/24 use adapter	98-005-1142	98-005-1142	98-005-1142	98-005-1142
43	1	Retaining ring	01-160-0730	01-160-0730	01-160-0730	01-160-0730
44	1	Retaining ring	01-160-0580	01-160-0580	01-160-0580	01-160-0530
45	12	Stud, 3/4-16 RH grade 8 (A' base only)	01-164-0060	01-164-0060	01-164-0060	01-164-0060
46	1	Seal dust boot	01-406-0090	01-406-0090	01-406-0090	01-406-0090

DISCONNECT ONLY

D1	1	Dowel pin, 5/8 x 3	01-152-0120	01-152-0120	01-152-0120	01-152-0120
D2	4	Hex head capscrew 5/16-18 X 1	01-150-1790	01-150-1790	01-150-1790	01-150-1790
D3	4	Lockwasher	01-166-0110	01-166-0110	01-166-0110	01-166-0110
D4	1	Disconnect plate	42-004-1482	42-004-1482	42-004-1482	42-004-1482
D5	1	Disconnect bushing	42-004-1492	42-004-1492	42-004-1492	42-004-1492
D6	1	O-ring	01-402-0900	01-402-0900	01-402-0900	01-402-0900
D7	1	O-ring	01-402-0910	01-402-0910	01-402-0910	01-402-0910
D8	1	Spring	01-261-0540	01-261-0540	01-261-0540	01-261-0540

FLOWTHRU ONLY

F1	2	45 Degree fitting, 1/4 NPT x #6	01-201-0670	01-201-0670	01-201-0670	01-201-0670
----	---	---------------------------------	-------------	-------------	-------------	-------------



* QUANTITY OF SHIMS DETERMINED BY BEARING PRE-LOAD REQUIRED

X440LW2-AB
DATE:03-27-06