

# 28P Double Planetary Exploded View Drawing

## MODEL P28

DOUBLE PLANETARY

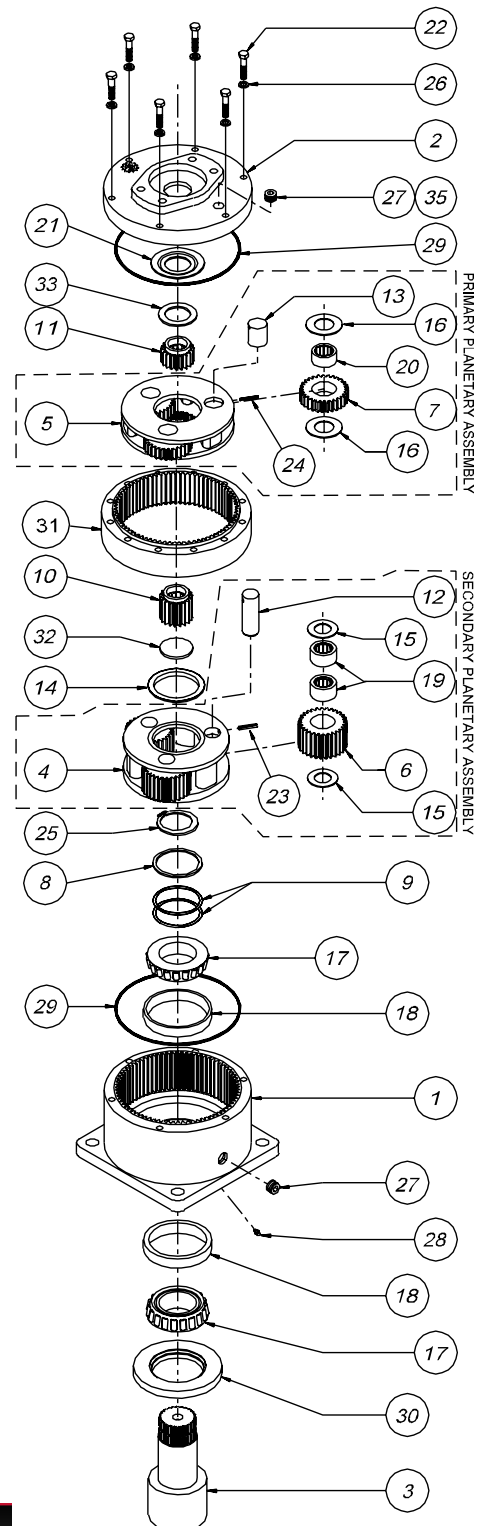


### ESKRIDGE

EFFECTIVE  
FROM: S/N 16549 07-28-93  
TO: (CURRENT)

### RATIO'S

Ratio	Ratio	Ratio	Ratio
16.65:1 4.08 4.08	20.62:1 5.05 4.08	20.62:1 4.08 5.05	25.53:1 5.05 5.05
		INVERTED	



PRIMARY PLANETARY ASSEMBLY

SECONDARY PLANETARY ASSEMBLY

CODE	DESCRIPTION	ITEM	QTY.	PART NUMBER	PART NUMBER	PART NUMBER	PART NUMBER
	P28 CASE-SQUARE- (NO ZERK)			28-004-3524			
	P28 CASE-SQUARE- W/ZERK	1	1	28-004-3524Z			
	C28 CASE-CUST.MTG PER CUSTOMER SPECS.			-	-	-	-
A	COVER-SAE 'A'			85-004-1513			
B	COVER-SAE 'B' 2-BOLT	2	1	85-004-1503			
C	COVER-SAE 'C' 4-BOLT			28-004-1013			
F1	SHAFT-1.5" KEYED	3	1	20-004-4122			
F2	SHAFT-2" KEYED			20-004-4112			
C1	SHAFT-CUSTOM PER CUSTOMER SPECS.			-	-	-	-
	CARRIER-SECONDARY	4	1	50-004-1062	50-004-1062	50-004-1052	50-004-1052
	CARRIER-PRIMARY	5	1	50-004-1082	50-004-1072	50-004-1082	50-004-1072
	PLANET GEAR-SEC.	6	3	85-004-1051	85-004-1051	85-004-1041	85-004-1041
	PLANET GEAR-PRI.	7	3	85-004-1031	85-004-1021	85-004-1031	85-004-1021
	SUPPORT WASHER	8	1	20-004-1031			
	SHIM	9	*	20-004-1091			
	SUN GEAR-SECONDARY	10	1	85-004-1412	85-004-1092	85-004-1072	85-004-1072
1	INPUT GEAR 21T,20/40 D.P.SPLINE			85-004-1402		85-004-1402	N/A
2	INPUT GEAR 13T,16/32 D.P.SPLINE			85-004-1102	85-004-1062		85-004-1062
3	INPUT GEAR SAE 1"-6B SPLINE			85-004-1122	85-004-1112		85-004-1112
4	INPUT GEAR 14T,12/24 D.P.SPLINE			85-004-1533		85-004-1533	N/A
5	INPUT GEAR 15T,16/32 D.P.SPLINE			85-004-1542	85-004-1422		85-004-1422
6	INPUT GEAR 1"DIA X .25" KEY			85-004-1582		85-004-1582	N/A
	PLANET SHAFT-SECONDARY	12	3	71-004-0121			
	PLANET SHAFT-PRIMARY	13	3	81-004-0071			
	THRUST WASHER-SEC.CUP	14	1	50-004-1011			
	THRUST WASHER-(SEC.PLANET GEAR)	15	6	85-004-1181			
	THRUST WASHER-(PRI.PLANET GEAR)	16	6	81-004-1561			
	BEARING CONE	17	2	01-102-0160			
	BEARING CUP	18	2	01-103-0160			
	BEARING-SEC.PLANET	19	6	01-105-0010			
	BEARING-PRI.PLANET	20	3	01-105-0410			
	THRUST WASHER-INPUT	21	1	50-004-1091			
	HEX CAPSCREW 5/16-18 X 2.75 GR8	22	6	01-150-1490			
	ROLLPIN-SECONDARY 3/16 X 7/8	23	3	01-153-0210			
	ROLLPIN-PRIMARY 1/8 X 1	24	3	01-153-0080			
	RETAINING RING	25	1	01-160-0250			
	LOCKWASHER 5/16 MED	26	6	01-166-0110			
	PIPE PLUG-MAG. 3/8 NPT-SOC HD	27	2	01-207-0070			
	GREASE FITTING (OPTIONAL)	28	(1)	01-215-0050			
	O-RING 167 MM X 3 MM	29	2	01-402-0560			
	SEAL-SHAFT	30	1	01-405-0610			
	RING GEAR	31	1	85-004-1313			
	THRUST BEARING	32	1	28-004-1021			
	THRUST BEARING	33	1	01-112-0230			
	AIR VENT 3/8 NPT (OPTIONAL)	35	(1)	01-216-0070			
-		-	-	-	-	-	-

NOTE \* BEARING PRELOAD DETERMINES QUANTITY OF SHIMS.

SEAL KIT (P/N 20-016-0511) INCLUDES (1 EA.) O-RINGS AND (1 EA.) SEAL. PLUS ADD (ONE EXTRA) O-RING.

FOR 20:1 RATIO, INPUT CODES 1, 4 AND 6 REQUIRE "INVERTED" RATIO CARRIER ASSEMBLIES.



GS Global Resources • 1-800-261-8735 • [gsglobalresources.com](http://gsglobalresources.com)  
926 Perkins Drive, Mukwonago, WI 53149

© GS GLOBAL RESOURCES, INC. ALL RIGHTS RESERVED.

ECN 2197  
X28PD2-BF DATE: 04-15-04

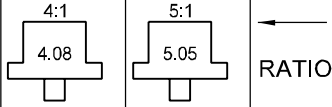
# 28LP Single Stage Exploded View Drawing

## ESKRIDGE MODEL 28LP

### SINGLE PLANETARY

EQUIPPED WITH PATENTED "LOAD-N-LOCK"®  
SHAFT RETENTION SYSTEM.  
(U.S. PATENT NO. 5746517).

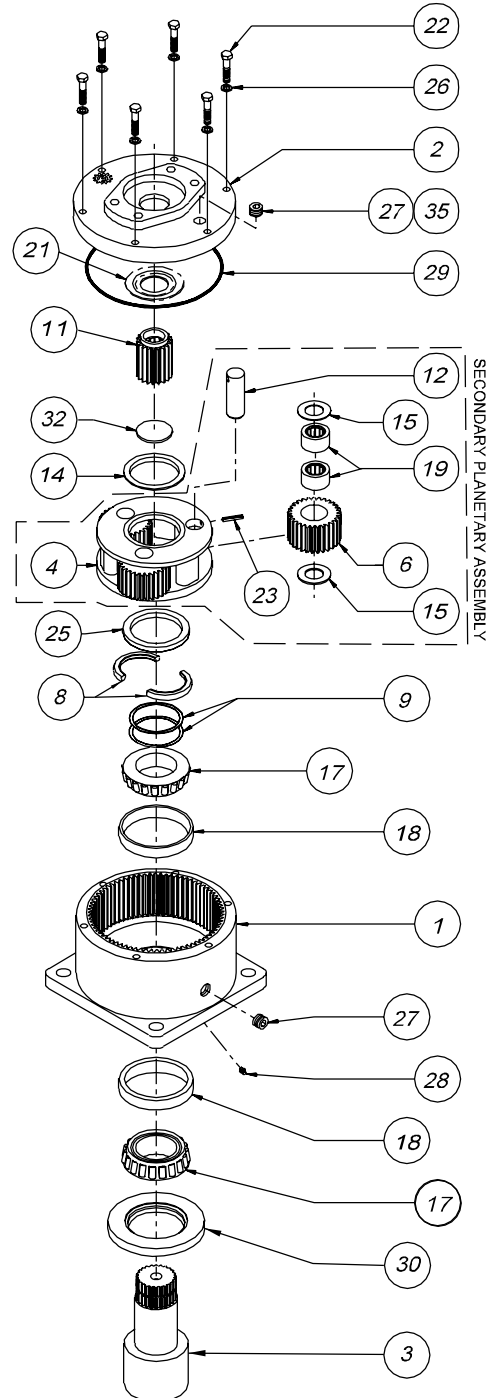
EFFECTIVE  
FROM: S/N 16401 07-01-93  
TO: (CURRENT)



PART NUMBER	PART NUMBER	QTY.	ITEM	C O D E	DESCRIPTION
←	28-004-3504	1	1		B28 CASE-SQUARE- (NO ZERK)
←	28-004-3504Z				B28 CASE-SQUARE- W/ZERK (28)
-	-	-	-		C28 CASE-CUST.MTG PER CUSTOMER SPECS.
←	85-004-1513	1	2	A	COVER-SAE 'A'
←	85-004-1503			B	COVER-SAE 'B' 2-BOLT
←	28-004-1013			C	COVER-SAE 'C' 4-BOLT
←	20-004-4122L	1	3	F1	SHAFT - 1.5" DIA. X 3/8 KEY - INTERNAL
←	20-004-4112L			F2	SHAFT - 2" DIA. X 1/2 KEY - INTERNAL
-	-	-	-	C1	SHAFT-CUSTOM PER CUSTOMER SPECS.
50-004-1062	50-004-1052	1	4		CARRIER-SECONDARY
85-004-1051	85-004-1041	3	6		PLANET GEAR-SEC.
-	-	-	7		PLANET GEAR-PRI.
←	20-004-1362	1	8		SPLIT RING (MATCHING HALVES)
←	20-004-1091	*	9		SHIM
85-004-1552	N/A			1	INPUT GEAR 21T, 20/40 D.P.SPLINE
85-004-1382	85-004-1392			2	INPUT GEAR 13T, 16/32 D.P.SPLINE
85-004-1272	85-004-1262			3	INPUT GEAR SAE 1"-6B SPLINE
85-004-1292	N/A	1	11	4	INPUT GEAR 14T, 12/24 D.P.SPLINE
85-004-1562	85-004-1572			5	INPUT GEAR 15T, 16/32 D.P.SPLINE
85-004-1592	N/A			6	INPUT GEAR 1" DIA X .25" KEY
←	71-004-0121	3	12		PLANET SHAFT-SECONDARY
←	50-004-1011	1	14		THRUST WASHER-SEC.CUP
←	85-004-1181	6	15		THRUST WASHER-(SEC.PLANET GEAR)
←	01-102-0160	2	17		BEARING CONE
←	01-103-0160	2	18		BEARING CUP
←	01-105-0010	6	19		BEARING-SEC.PLANET
←	50-004-1091	1	21		THRUST WASHER-INPUT
←	01-150-1400	6	22		HEX CAPSCREW 5/16-18 X 1.5 GR8
←	01-153-0210	3	23		ROLLPIN-SECONDARY 3/16 X 7/8
←	20-004-1372	1	25		LOCK RING
←	01-166-0110	6	26		LOCKWASHER 5/16 MED
←	01-207-0070	2	27		PIPE PLUG-MAG. 3/8 NPT-SOC HD
←	01-215-0050	(1)	28		GREASE FITTING (OPTIONAL)
←	01-402-0560	1	29		O-RING 167 MM X 3 MM
←	01-405-0610	1	30		SEAL-SHAFT
←	28-004-1021	1	32		THRUST BEARING
←	01-216-0070	(1)	35		AIR VENT 3/8 NPT (OPTIONAL)
-	-	-	-		-

NOTE \* BEARING PRELOAD DETERMINES QUANTITY OF SHIMS.

SEAL KIT; P/N 20-016-0501; INCLUDES ITEMS 29 AND 30.



SECONDARY PLANETARY ASSEMBLY

# 28LP Double Stage Exploded View Drawing

## ESKRIDGE MODEL 28LP

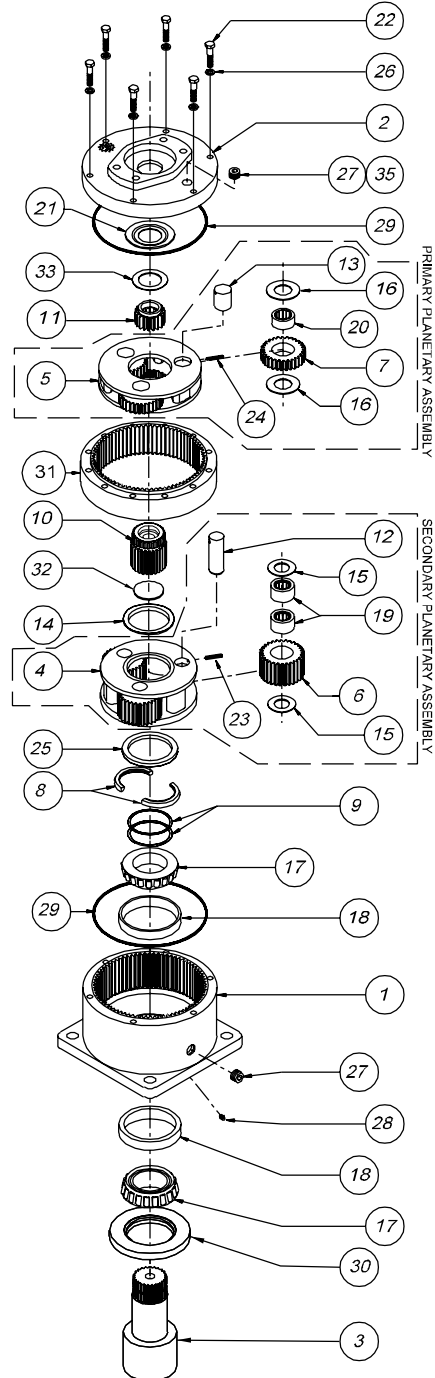
EQUIPPED WITH PATENTED "LOAD-N-LOCK"®  
SHAFT RETENTION SYSTEM.  
(U.S. PATENT NO. 5746517).

EFFECTIVE  
FROM: S/N 16401 07-01-93  
TO: (CURRENT)

### DOUBLE PLANETARY

RATIO	16.65:1 4.08 4.08	20.62:1 5.05 4.08	20.62:1 4.08 5.05 INVERTED	25.53:1 5.05 5.05
→				

ITEM	QTY.	PART NUMBER	PART NUMBER	PART NUMBER	PART NUMBER
		28-004-3504	28-004-3504	28-004-3504	28-004-3504
		28-004-3504Z	28-004-3504Z	28-004-3504Z	28-004-3504Z
		-	-	-	-
A		85-004-1513	85-004-1513	85-004-1513	85-004-1513
B		85-004-1503	85-004-1503	85-004-1503	85-004-1503
C		28-004-1013	28-004-1013	28-004-1013	28-004-1013
F1		20-004-4122L	20-004-4122L	20-004-4122L	20-004-4122L
F2		20-004-4112L	20-004-4112L	20-004-4112L	20-004-4112L
C1		-	-	-	-
		50-004-1062	50-004-1062	50-004-1052	50-004-1052
		50-004-1082	50-004-1072	50-004-1082	50-004-1072
		85-004-1051	85-004-1051	85-004-1041	85-004-1041
		85-004-1031	85-004-1021	85-004-1031	85-004-1021
		20-004-1362	20-004-1362	20-004-1362	20-004-1362
		20-004-1091	20-004-1091	20-004-1091	20-004-1091
		85-004-1412	85-004-1092	85-004-1072	85-004-1072
1		85-004-1402		85-004-1402	N/A
2		85-004-1102	85-004-1062		85-004-1062
3		85-004-1122	85-004-1122		85-004-1122
4		85-004-1533		85-004-1533	N/A
5		85-004-1542	85-004-1422		85-004-1422
6		85-004-1582		85-004-1582	N/A
		71-004-0121	71-004-0121	71-004-0121	71-004-0121
		81-004-0071	81-004-0071	81-004-0071	81-004-0071
		50-004-1011	50-004-1011	50-004-1011	50-004-1011
		85-004-1181	85-004-1181	85-004-1181	85-004-1181
		85-004-1561	85-004-1561	85-004-1561	85-004-1561
		01-102-0160	01-102-0160	01-102-0160	01-102-0160
		01-103-0160	01-103-0160	01-103-0160	01-103-0160
		01-105-0010	01-105-0010	01-105-0010	01-105-0010
		01-105-0410	01-105-0410	01-105-0410	01-105-0410
		50-004-1091	50-004-1091	50-004-1091	50-004-1091
		01-150-1490	01-150-1490	01-150-1490	01-150-1490
		01-153-0210	01-153-0210	01-153-0210	01-153-0210
		01-153-0080	01-153-0080	01-153-0080	01-153-0080
		20-004-1372	20-004-1372	20-004-1372	20-004-1372
		01-168-0110	01-168-0110	01-168-0110	01-168-0110
		01-207-0070	01-207-0070	01-207-0070	01-207-0070
		01-215-0050	01-215-0050	01-215-0050	01-215-0050
		01-402-0560	01-402-0560	01-402-0560	01-402-0560
		01-405-0610	01-405-0610	01-405-0610	01-405-0610
		85-004-1313	85-004-1313	85-004-1313	85-004-1313
		28-004-1021	28-004-1021	28-004-1021	28-004-1021
		01-112-0230	01-112-0230	01-112-0230	01-112-0230
		01-216-0070	01-216-0070	01-216-0070	01-216-0070



NOTE \* BEARING PRELOAD DETERMINES QUANTITY OF SHIMS.

SEAL KIT; P/N 20-016-0501; INCLUDES ITEMS 29 AND 30.

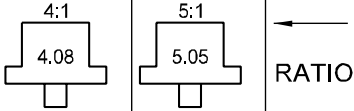
▶ INVERTED RATIOS REQUIRED WITH INPUT CODES 1,4,8,6.

# 28LB Single Stage Exploded View Drawing

## ESKRIDGE MODEL 28LB

### SINGLE PLANETARY

EQUIPPED WITH PATENTED "LOAD-N-LOCK"®  
SHAFT RETENTION SYSTEM,  
(U.S. PATENT NO. 5746517).



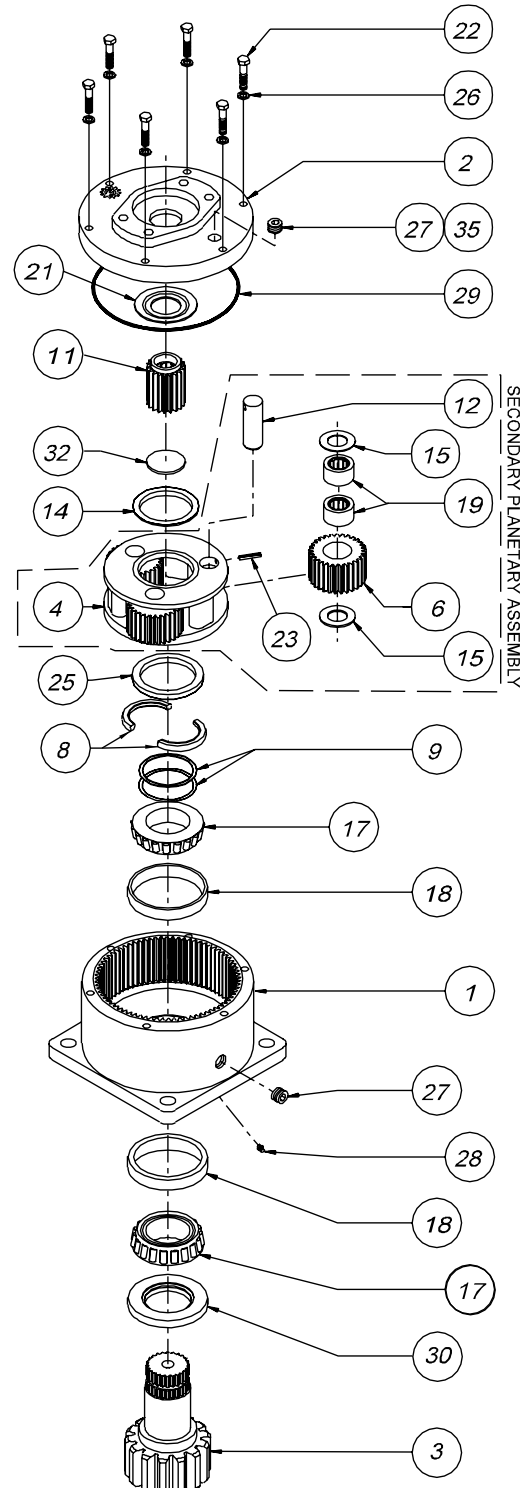
RATIO

EFFECTIVE  
FROM: S/N 16401 07-01-93  
TO: (CURRENT)

PART NUMBER	PART NUMBER	QTY.	ITEM	C O D E	DESCRIPTION
←	28-004-3504	1	1		B28 CASE-SQUARE- (NO ZERK)
←	28-004-3504Z			B28 CASE-SQUARE- W/ZERK (28)	
-	-			C28 CASE-CUST.MTG PER CUSTOMER SPECS.	
←	85-004-1513	1	2	A	COVER-SAE 'A'
←	85-004-1503			B	COVER-SAE 'B' 2-BOLT
←	28-004-1013			C	COVER-SAE 'C' 4-BOLT
←	20-004-4022L	1	3	D1	2"DIA SHAFT-3/8" KEYWAY
←	20-004-4032L			D2	SHAFT 23T, 12/24 D.P. SPLINE
←	20-004-4042L			D3	2" DIA.SHAFT-1/2"KEYWAY
←	28-004-4202L			D4	2.25"D.SHAFT-1/2"KEYWAY
-	-			C1	SHAFT-CUSTOM PER CUSTOMER SPECS.
←	50-004-1062	1	4		CARRIER-SECONDARY
←	85-004-1051	3	6		PLANET GEAR-SEC.
←	-	-	7		PLANET GEAR-PRI.
←	20-004-1362	1	8		SPLIT RING (MATCHING HALVES)
←	20-004-1091	*	9		SHIM
←	85-004-1552	1	11	1	INPUT GEAR 21T,20/40 D.P.SPLINE
←	85-004-1382			2	INPUT GEAR 13T,16/32 D.P.SPLINE
←	85-004-1272			3	INPUT GEAR SAE 1"-6B SPLINE
←	85-004-1292			4	INPUT GEAR 14T,12/24 D.P.SPLINE
←	85-004-1562			5	INPUT GEAR 15T,16/32 D.P.SPLINE
←	85-004-1592			6	INPUT GEAR 1"DIA X .25" KEY
←	71-004-0121	3	12		PLANET SHAFT-SECONDARY
←	50-004-1011	1	14		THRUST WASHER-SEC.CUP
←	85-004-1181	6	15		THRUST WASHER-(SEC.PLANET GEAR)
←	01-102-0160	2	17		BEARING CONE
←	01-103-0160	2	18		BEARING CUP
←	01-105-0010	6	19		BEARING-SEC.PLANET
←	50-004-1091	1	21		THRUST WASHER-INPUT
←	01-150-1400	6	22		HEX CAPSCREW 5/16-18 X 1.5 GR8
←	01-153-0210	3	23		ROLLPIN-SECONDARY 3/16 X 7/8
←	20-004-1372	1	25		LOCK RING
←	01-166-0110	6	26		LOCKWASHER 5/16 MED
←	01-207-0070	2	27		PIPE PLUG-MAG. 3/8 NPT-SOC HD
←	01-215-0050	(1)	28		GREASE FITTING (OPTIONAL)
←	01-402-0560	1	29		O-RING 167 MM X 3 MM
←	01-405-0550	1	30		SEAL-SHAFT
←	28-004-1021	1	32		THRUST BEARING
←	01-216-0070	(1)	35		AIR VENT 3/8 NPT (OPTIONAL)
-	-	-	-		-

NOTE \* BEARING PRELOAD DETERMINES QUANTITY OF SHIMS.

SEAL KIT; P/N 20-016-0501; INCLUDES ITEMS 29 AND 30.



SECONDARY PLANETARY ASSEMBLY

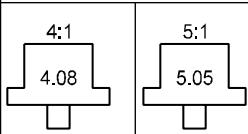
# 28B Single Planetary Exploded View Drawing

**MODEL B28**  
SINGLE PLANETARY



EFFECTIVE  
FROM: S/N 16401 07-01-93  
TO: (CURRENT)

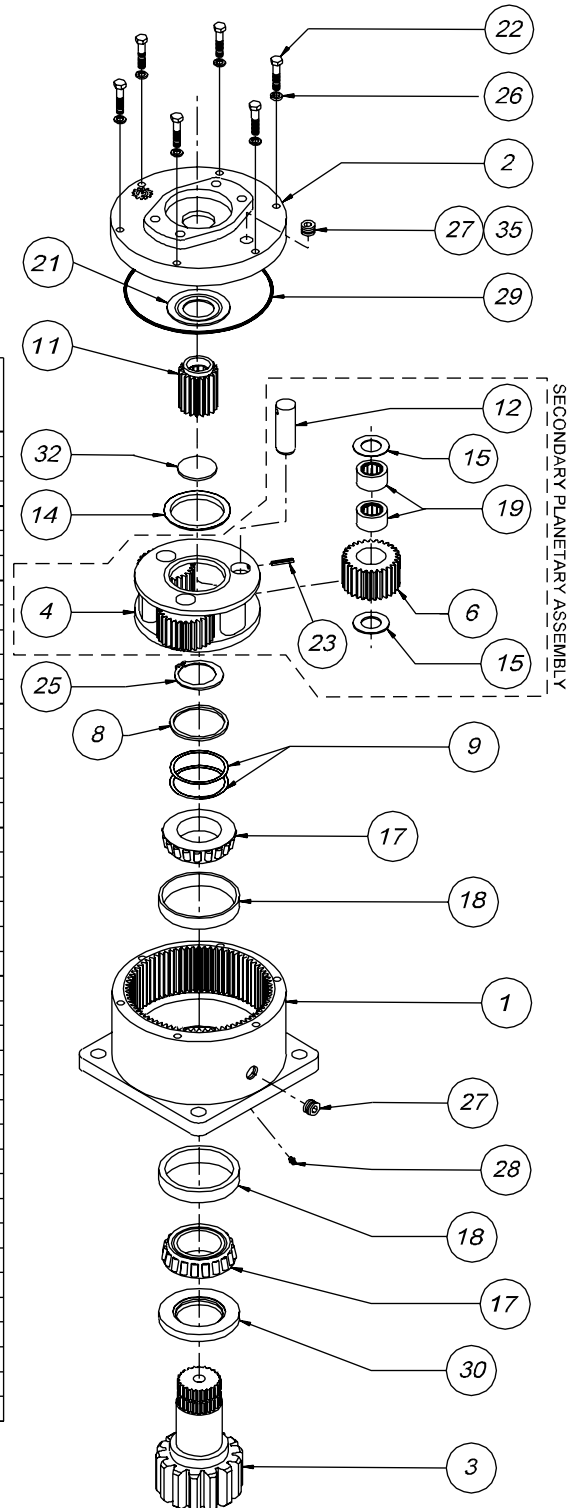
## RATIO'S



PART NUMBER	PART NUMBER	QTY.	ITEM	CODE	DESCRIPTION
←	28-004-3504	1	1		B28 CASE-SQUARE- (NO ZERK)
←	28-004-3504Z				B28 CASE-SQUARE- W/ZERK
-	-				C28 CASE-CUST.MTG PER CUSTOMER SPECS.
←	85-004-1513	1	2	A	COVER-SAE 'A'
←	85-004-1503			B	COVER-SAE 'B' 2-BOLT
←	28-004-1013			C	COVER-SAE 'C' 4-BOLT
←	20-004-4022	1	3	D1	2"DIA SHAFT-3/8" KEYWAY
←	20-004-4032			D2	SHAFT 23T, 12/24 D.P. SPLINE
←	20-004-4042			D3	2" DIA.SHAFT-1/2"KEYWAY
←	28-004-4202			D4	2.25"D.SHAFT-1/2"KEYWAY
-	-			C1	SHAFT-CUSTOM PER CUSTOMER SPECS.
←	50-004-1062	1	4		CARRIER-SECONDARY
←	85-004-1051	3	6		PLANET GEAR-SEC.
←	-	-	7		PLANET GEAR-PRI.
←	20-004-1031	1	8		SUPPORT WASHER
←	20-004-1091	*	9		SHIM
←	85-004-1552	1	11	1	INPUT GEAR 21T,20/40 D,P.SPLINE
←	85-004-1382			2	INPUT GEAR 13T,16/32 D.P.SPLINE
←	85-004-1272			3	INPUT GEAR SAE 1"-6B SPLINE
←	85-004-1292			4	INPUT GEAR 14T,12/24 D.P.SPLINE
←	85-004-1562			5	INPUT GEAR 15T,16/32 D.P.SPLINE
←	85-004-1592			6	INPUT GEAR 1"DIA X .25" KEY
←	71-004-0121	3	12		PLANET SHAFT-SECONDARY
←	50-004-1011	1	14		THRUST WASHER-SEC.CUP
←	85-004-1181	6	15		THRUST WASHER-(SEC.PLANET GEAR)
←	01-102-0160	2	17		BEARING CONE
←	01-103-0160	2	18		BEARING CUP
←	01-105-0010	6	19		BEARING-SEC.PLANET
←	50-004-1091	1	21		THRUST WASHER-INPUT
←	01-150-1400	6	22		HEX CAPSCREW 5/16-18 X 1.5 GR8
←	01-153-0210	3	23		ROLLPIN-SECONDARY 3/16 X 7/8
←	01-160-0250	1	25		RETAINING RING
←	01-166-0110	6	26		LOCKWASHER 5/16 MED
←	01-207-0070	2	27		PIPE PLUG-MAG. 3/8 NPT-SOC HD
←	01-215-0050	(1)	28		GREASE FITTING (OPTIONAL)
←	01-402-0560	1	29		O-RING 167 MM X 3 MM
←	01-405-0550	1	30		SEAL-SHAFT
←	28-004-1021	1	32		THRUST BEARING
←	01-216-0070	(1)	35		AIR VENT 3/8 NPT (OPTIONAL)
-	-	-	-		-

NOTE \* BEARING PRELOAD DETERMINES QUANTITY OF SHIMS.

SEAL KIT; P/N 20-016-0501; INCLUDES ITEMS 29 AND 30.



# 28B Double Planetary Exploded View Drawing

## MODEL B28

DOUBLE PLANETARY

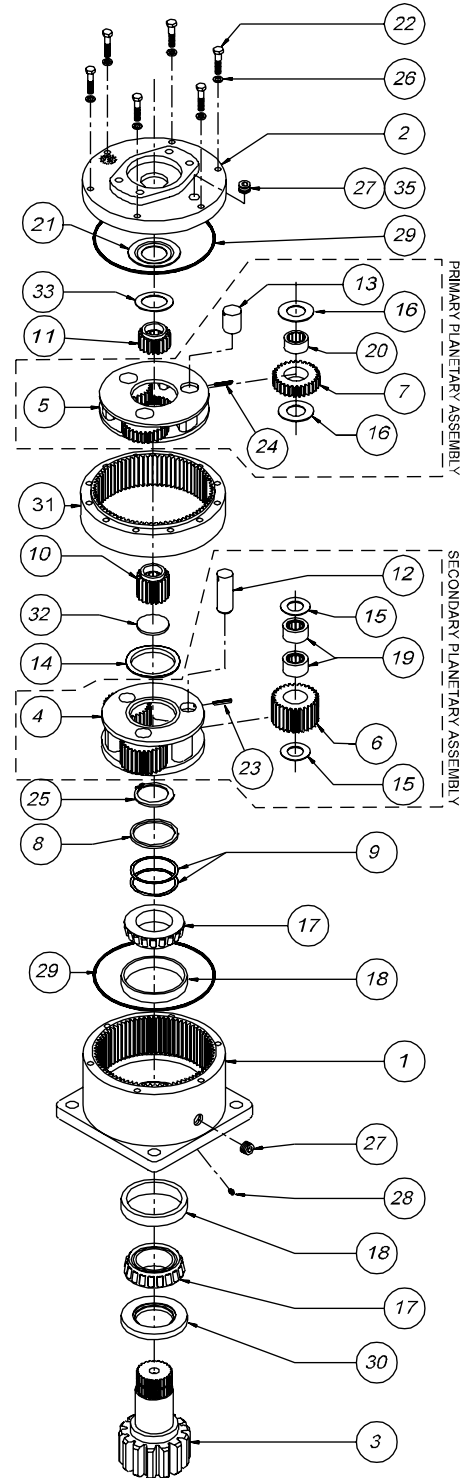


EFFECTIVE  
FROM: S/N 16401 07-01-93  
TO: (CURRENT)

### RATIO'S

16.65:1 4.08 4.08	20.62:1 5.05 4.08	20.62:1 4.08 5.05	25.53:1 5.05 5.05
		INVERTED	

CODE	DESCRIPTION	ITEM	QTY.	PART NUMBER	PART NUMBER	PART NUMBER	PART NUMBER
	B28 CASE-SQUARE- (NO ZERK)			28-004-3504			
	B28 CASE-SQUARE- W/ZERK	1	1	28-004-3504Z			
	C28 CASE-CUST.MTG PER CUSTOMER SPECS.			-	-	-	-
A	COVER-SAE 'A'			85-004-1513			
B	COVER-SAE 'B' 2-BOLT	2	1	85-004-1503			
C	COVER-SAE 'C' 4-BOLT			28-004-1013			
D1	2"DIA SHAFT-3/8" KEYWAY			20-004-4022			
D2	SHAFT 23T, 12/24 D.P. SPLINE			20-004-4032			
D3	2" DIA.SHAFT-1/2"KEYWAY	3	1	20-004-4042			
D4	2.25"D.SHAFT-1/2"KEYWAY			28-004-4202			
C1	SHAFT-CUSTOM PER CUSTOMER SPECS.			-	-	-	-
	CARRIER-SECONDARY	4	1	50-004-1062	50-004-1062	50-004-1052	50-004-1052
	CARRIER-PRIMARY	5	1	50-004-1082	50-004-1072	50-004-1082	50-004-1072
	PLANET GEAR-SEC.	6	3	85-004-1051	85-004-1051	85-004-1041	85-004-1041
	PLANET GEAR-PRI.	7	3	85-004-1031	85-004-1021	85-004-1031	85-004-1021
	SUPPORT WASHER	8	1	20-004-1031			
	SHIM	9	★	20-004-1091			
	SUN GEAR-SECONDARY	10	1	85-004-1412	85-004-1092	85-004-1072	85-004-1072
1	INPUT GEAR 21T,20/40 D.P.SPLINE			85-004-1402		85-004-1402	N/A
2	INPUT GEAR 13T,16/32 D.P.SPLINE			85-004-1102	85-004-1062		85-004-1062
3	INPUT GEAR SAE 1"-6B SPLINE			85-004-1122	85-004-1112		85-004-1112
4	INPUT GEAR 14T,12/24 D.P.SPLINE			85-004-1533		85-004-1533	N/A
5	INPUT GEAR 15T,16/32 D.P.SPLINE			85-004-1542	85-004-1422		85-004-1422
6	INPUT GEAR 1"DIA X .25" KEY			85-004-1582		85-004-1582	N/A
	PLANET SHAFT-SECONDARY	12	3	71-004-0121			
	PLANET SHAFT-PRIMARY	13	3	81-004-0071			
	THRUST WASHER-SEC.CUP	14	1	50-004-1011			
	THRUST WASHER-(SEC.PLANET GEAR)	15	6	85-004-1181			
	THRUST WASHER-(PRI.PLANET GEAR)	16	6	81-004-1561			
	BEARING CONE	17	2	01-102-0160			
	BEARING CUP	18	2	01-103-0160			
	BEARING-SEC.PLANET	19	6	01-105-0010			
	BEARING-PRI.PLANET	20	3	01-105-0410			
	THRUST WASHER-INPUT	21	1	50-004-1091			
	HEX CAPSCREW 5/16-18 X 2.75 GR8	22	6	01-150-1490			
	ROLLPIN-SECONDARY 3/16 X 7/8	23	3	01-153-0210			
	ROLLPIN-PRIMARY 1/8 X 1	24	3	01-153-0080			
	RETAINING RING	25	1	01-160-0250			
	LOCKWASHER 5/16 MED	26	6	01-166-0110			
	PIPE PLUG-MAG. 3/8 NPT-SOC HD	27	2	01-207-0070			
	GREASE FITTING (OPTIONAL)	28	(1)	01-215-0050			
	O-RING 167 MM X 3 MM	29	2	01-402-0560			
	SEAL-SHAFT	30	1	01-405-0550			
	RING GEAR	31	1	85-004-1313			
	THRUST BEARING	32	1	28-004-1021			
	THRUST BEARING	33	1	01-112-0230			
	AIR VENT 3/8 NPT (OPTIONAL)	35	(1)	01-216-0070			
-		-	-	-	-	-	-



NOTE ★ BEARING PRELOAD DETERMINES QUANTITY OF SHIMS.

SEAL KIT: P/N 20-016-0521; INCLUDES(2) ITEM 29 AND (1) ITEM 30.

▶ FOR 20:1 RATIO, INPUT CODES 1, 4 AND 6 REQUIRE "INVERTED" RATIO CARRIER ASSEMBLIES.

ECN 2197  
X28B02-BF

DATE: 04-15-04