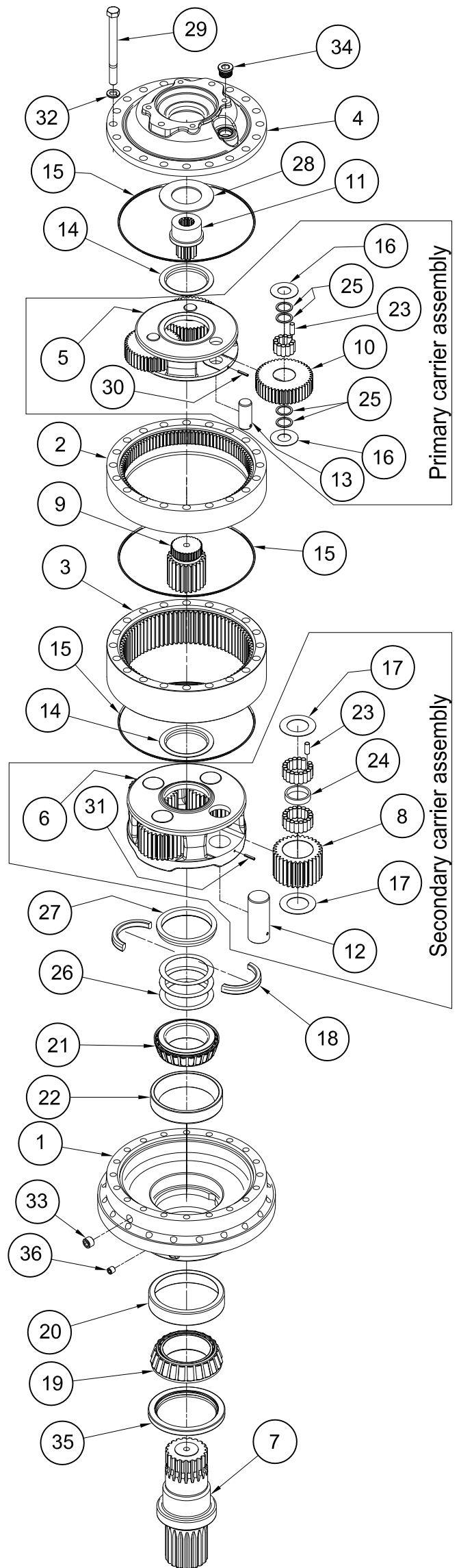


ESKRIDGE MODEL 254L

EQUIPPED WITH "LOAD-N-LOCK"[®] SHAFT RETENTION SYSTEM

ITEM	QTY	DESCRIPTION	RATIO →			
			20.25:1 4.3125:1 4.6957:1	26.34:1 5.609:1 4.6957:1	29.58 6.3:1 4.6957:1	40.24:1 8.57:1 4.6957:1
		DESCRIPTION	PART NO.	PART NO.	PART NO.	PART NO.
1	1	250A BASE - ROUND	25-004-3042	25-004-3042	25-004-3042	25-004-3042
		250F BASE - FLANGELESS	25-004-3052	25-004-3052	25-004-3052	25-004-3052
		250Q BASE - ECCENTRIC PILOT	25-004-3132	25-004-3132	25-004-3132	25-004-3132
		CUSTOM BASE	-	-	-	-
2	1	RING GEAR - PRIMARY	25-004-1562	25-004-1562	25-004-1562	25-004-1562
3	1	RING GEAR - SECONDARY	25-004-1612	25-004-1612	25-004-1612	25-004-1612
4	1	A - SAE 'A' COVER	25-005-2061	25-005-2061	25-005-2061	25-005-2061
		B - SAE 'B' COVER	25-005-2051	25-005-2051	25-005-2051	25-005-2051
		C - SAE 'C' (2 AND 4 BOLT)	25-004-1222	25-004-1222	25-004-1222	25-004-1222
		D - SAE 'D' COVER	25-004-1232	25-004-1232	25-004-1232	25-004-1232
5	1	CARRIER - PRIMARY	25-004-1692	25-004-1642	25-004-1702	25-004-1412
6	1	CARRIER - SECONDARY	25-004-1602	25-004-1602	25-004-1602	25-004-1602
7	1	D1 - OUTPUT SHAFT 20T 6/12 SPLINE	25-004-4032L	25-004-4032L	25-004-4032L	25-004-4032L
		D2 - OUTPUT SHAFT 3.75" DIA, KEYED	25-004-4042L	25-004-4042L	25-004-4042L	25-004-4042L
		S1 - OUTPUT SHAFT SPINDLE 9.0" PILOT	25-004-4062L	25-004-4062L	25-004-4062L	25-004-4062L
		C1 - OUTPUT SHAFT - CUSTOM	-	-	-	-
8	4	PLANET GEAR - SECONDARY	25-004-1632	25-004-1632	25-004-1632	25-004-1632
9	1	SUN GEAR - SECONDARY	25-004-1622	25-004-1622	25-004-1622	25-004-1622
10	3	PLANET GEAR - PRIMARY	25-004-1712	25-004-1652	25-004-1722	25-004-1552
11	1	INPUT GEAR INPUT 14T SPL	25-004-1732	25-004-1792	25-004-1742	25-004-1812
		INPUT GEAR INPUT 13T SPL	25-004-1762	25-004-1802	25-004-1772	25-004-1782
12	4	PLANET SHAFT - SECONDARY	25-004-1432	25-004-1432	25-004-1432	25-004-1432
13	3	PLANET SHAFT - PRIMARY	25-004-1442	25-004-1442	25-004-1442	25-004-1442
14	2	THRUST WASHER - CARRIER	25-004-1132	25-004-1132	25-004-1132	25-004-1132
15	3	SEAL (O-RING)	01-402-0020	01-402-0020	01-402-0020	01-402-0020
16	6	THRUST WASHER - PRI. PLANET	13-004-1582	13-004-1582	13-004-1582	13-004-1582
17	8	THRUST WASHER - SEC. PLANET	25-004-1462	25-004-1462	25-004-1462	25-004-1462
18	1	SPLIT RING- LOAD-N-LOCK	25-004-1182	25-004-1182	25-004-1182	25-004-1182
19	1	BEARING CONE - OUTER	01-102-0120	01-102-0120	01-102-0120	01-102-0120
20	1	BEARING CUP - OUTER	01-103-0110	01-103-0110	01-103-0110	01-103-0110
21	1	BEARING CONE - INNER	01-102-0250	01-102-0250	01-102-0250	01-102-0250
22	1	BEARING CUP - INNER	01-103-0250	01-103-0250	01-103-0250	01-103-0250
23	180	ROLLER (SEC = 2 X 18, PRI = 1 X 12)	01-106-0010	01-106-0010	01-106-0010	01-106-0010
24	4	SPACER - SEC PLANET BEARING	25-004-1452	25-004-1452	25-004-1452	25-004-1452
25	12	SPACER - PRI PLANET BEARING	13-004-1592	13-004-1592	13-004-1592	13-004-1592
26	*	SHIM - SHAFT ADJUSTMENT	25-004-1051	25-004-1051	25-004-1051	25-004-1051
27	1	LOCK RING - LOAD-N-LOCK	25-004-1192	25-004-1192	25-004-1192	25-004-1192
28	1	THRUST WASHER - INPUT GEAR	25-004-1752	25-004-1752	25-004-1752	25-004-1752
29	20	HEX HEAD CAPSCREW (5/8-11 X 7) GR 8	01-150-1630	01-150-1630	01-150-1630	01-150-1630
30	3	ROLL PIN (3/16 X 1)	01-153-0020	01-153-0020	01-153-0020	01-153-0020
31	4	ROLL PIN (3/16 X 1 1/4)	01-153-0190	01-153-0190	01-153-0190	01-153-0190
32	20	LOCKWASHER - (5/8)	01-166-0040	01-166-0040	01-166-0040	01-166-0040
33	1	PIPE PLUG (1/2 NPT MAGNETIC) - BASE	01-207-0041	01-207-0041	01-207-0041	01-207-0041
34	1	PLUG - COVER	01-208-0030	01-208-0030	01-208-0030	01-208-0030
35	1	SHAFT SEAL	01-405-0740	01-405-0740	01-405-0740	01-405-0740
36	1	PLUG 1/4 NPT	01-207-0020	01-207-0020	01-207-0020	01-207-0020
		GREASE FITTING (OPTIONAL)	01-215-0040	01-215-0040	01-215-0040	01-215-0040



* QUANTITY OF SHIMS DETERMINED BY BEARING PRELOAD.

OPTIONS SEAL KIT P/N 25-016-2061
INCLUDES 1 EA. OF ITEMS 35
AND A QTY 3 OF ITEM 15

X254LD2-Bd ECN: 4078 DATE: 04-17-17 MTK